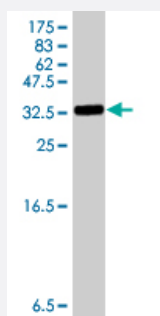


S100A1 polyclonal antibody (A01)

Catalog # H00006271-A01

Size 50 uL

Applications



Western Blot detection against Immunogen (34.36 KDa) .

Specification

Product Description	Mouse polyclonal antibody raised against a partial recombinant S100A1.
Immunogen	S100A1 (NP_006262, 1 a.a. ~ 75 a.a) partial recombinant protein with GST tag.
Sequence	MGSELETAMETLINVFHAHSGKEGDKYKLSKKELKELLQTELSGFLDAQKDVDKVMKELDE NGDGEVDFQEY
Host	Mouse
Reactivity	Human
Interspecies Antigen Sequence	Mouse (93); Rat (92)
Quality Control Testing	Antibody Reactive Against Recombinant Protein. Western Blot detection against Immunogen (34.36 KDa) .
Storage Buffer	50 % glycerol
Storage Instruction	Store at -20°C or lower. Aliquot to avoid repeated freezing and thawing.

Applications

- Western Blot (Recombinant protein)

[Protocol Download](#)

- ELISA

Gene Info — S100A1

Entrez GeneID [6271](#)

GeneBank Accession# [NM_006271](#)

Protein Accession# [NP_006262](#)

Gene Name S100A1

Gene Alias S100, S100-alpha, S100A

Gene Description S100 calcium binding protein A1

Omim ID [176940](#)

Gene Ontology [Hyperlink](#)

Gene Summary

The protein encoded by this gene is a member of the S100 family of proteins containing 2 EF-hand calcium-binding motifs. S100 proteins are localized in the cytoplasm and/or nucleus of a wide range of cells, and involved in the regulation of a number of cellular processes such as cell cycle progression and differentiation. S100 genes include at least 13 members which are located as a cluster on chromosome 1q21. This protein may function in stimulation of Ca²⁺-induced Ca²⁺ release, inhibition of microtubule assembly, and inhibition of protein kinase C-mediated phosphorylation. Reduced expression of this protein has been implicated in cardiomyopathies. [provided by RefSeq]

Other Designations

OTTHUMP00000035100|S100 alpha|S100 calcium-binding protein A1|S100 protein, alpha polypeptide

Disease

- [Breast cancer](#)
- [Breast Neoplasms](#)
- [Dermatitis](#)
- [DNA Damage](#)

- [Genetic Predisposition to Disease](#)