

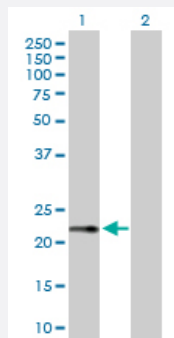
MaxPab®

RPS27A purified MaxPab rabbit polyclonal antibody (D01P)

Catalog # H00006233-D01P

Size 100 ug

Applications



Western Blot (Transfected lysate)

Western Blot analysis of RPS27A expression in transfected 293T cell line ([H00006233-T02](#)) by RPS27A MaxPab polyclonal antibody.

Lane 1: RPS27A transfected lysate(18.00 KDa).

Lane 2: Non-transfected lysate.

Specification

Product Description	Rabbit polyclonal antibody raised against a full-length human RPS27A protein.
Immunogen	RPS27A (NP_002945.1, 1 a.a. ~ 156 a.a) full-length human protein.
Sequence	MQIFVKLTGKTITLEVEPSDTIENVKAKIQDKEGIPPDQQRLIFAGKQLEDGRTLSDYNIQKESTLHL VLRLRGGAKKRKKSYTTPKKNKHKRKKVKLAVLKYYKVDENGKISRLRRECPSDECGAGVFMA SHFDRHYCGKCCLTYCFNKPEDK
Host	Rabbit
Reactivity	Human
Interspecies Antigen Sequence	Mouse (99)
Quality Control Testing	Antibody reactive against mammalian transfected lysate.
Storage Buffer	In 1x PBS, pH 7.4
Storage Instruction	Store at -20°C or lower. Aliquot to avoid repeated freezing and thawing.

Applications

- Western Blot (Transfected lysate)

Western Blot analysis of RPS27A expression in transfected 293T cell line ([H00006233-T02](#)) by RPS27A MaxPab polyclonal antibody.

Lane 1: RPS27A transfected lysate(18.00 KDa).

Lane 2: Non-transfected lysate.

[Protocol Download](#)

Gene Info — RPS27A

Entrez GeneID [6233](#)

GeneBank Accession# [NM_002954.3](#)

Protein Accession# [NP_002945.1](#)

Gene Name RPS27A

Gene Alias CEP80, HUBCEP80, UBA80, UBCEP1, UBCEP80

Gene Description ribosomal protein S27a

Omim ID [191343](#)

Gene Ontology [Hyperlink](#)

Gene Summary Ubiquitin, a highly conserved protein that has a major role in targeting cellular proteins for degradation by the 26S proteasome, is synthesized as a precursor protein consisting of either polyubiquitin chains or a single ubiquitin fused to an unrelated protein. This gene encodes a fusion protein consisting of ubiquitin at the N terminus and ribosomal protein S27a at the C terminus. When expressed in yeast, the protein is post-translationally processed, generating free ubiquitin monomer and ribosomal protein S27a. Ribosomal protein S27a is a component of the 40S subunit of the ribosome and belongs to the S27AE family of ribosomal proteins. It contains C4-type zinc finger domains and is located in the cytoplasm. Pseudogenes derived from this gene are present in the genome. As with ribosomal protein S27a, ribosomal protein L40 is also synthesized as a fusion protein with ubiquitin; similarly, ribosomal protein S30 is synthesized as a fusion protein with the ubiquitin-like protein fubi. Multiple alternatively spliced transcript variants that encode the same proteins have been identified.[provided by RefSeq]

Other Designations 40S ribosomal protein S27a|ubiquitin and ribosomal protein S27a|ubiquitin carboxyl extension protein 80|ubiquitin-CEP80

Pathway

- [Ribosome](#)