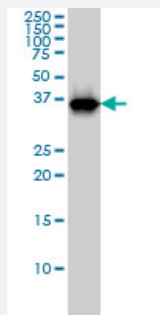


RFC4 monoclonal antibody (M01), clone 1C12

Catalog # H00005984-M01

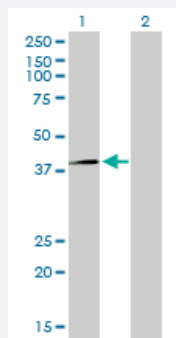
Size 100 ug

Applications



Western Blot (Cell lysate)

RFC4 monoclonal antibody (M01), clone 1C12 Western Blot analysis of RFC4 expression in K-562 (Cat # L009V1).

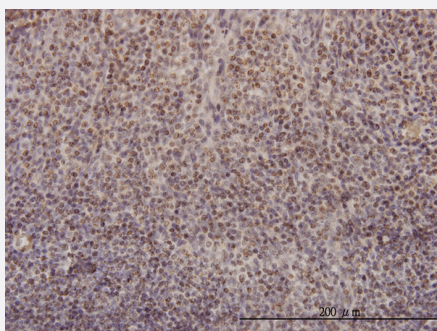


Western Blot (Transfected lysate)

Western Blot analysis of RFC4 expression in transfected 293T cell line by RFC4 monoclonal antibody (M01), clone 1C12.

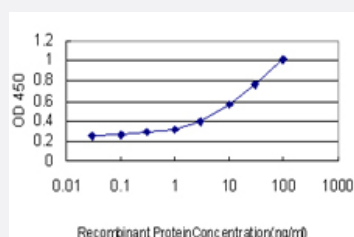
Lane 1: RFC4 transfected lysate(39.7 KDa).

Lane 2: Non-transfected lysate.



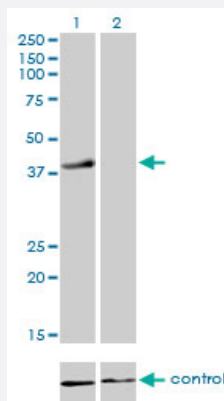
Immunohistochemistry (Formalin/PFA-fixed paraffin-embedded sections)

Immunoperoxidase of monoclonal antibody to RFC4 on formalin-fixed paraffin-embedded human tonsil. [antibody concentration 3 ug/ml]



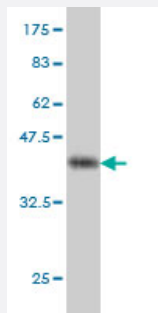
Sandwich ELISA (Recombinant protein)

Detection limit for recombinant GST tagged RFC4 is approximately 0.3ng/ml as a capture antibody.



RNAi Knockdown (Antibody validated)

Western blot analysis of RFC4 over-expressed 293 cell line, cotransfected with RFC4 Validated Chimera RNAi (Cat # H00005984-R01V) (Lane 2) or non-transfected control (Lane 1). Blot probed with RFC4 monoclonal antibody (M01), clone 1C12 (Cat # H00005984-M01). GAPDH (36.1 kDa) used as specificity and loading control.



Western Blot detection against Immunogen (37.73 KDa) .

Specification

Product Description	Mouse monoclonal antibody raised against a partial recombinant RFC4.
Immunogen	RFC4 (AAH17452, 254 a.a. ~ 363 a.a) partial recombinant protein with GST tag. MW of the GST tag alone is 26 KDa.
Sequence	GKEITEKVITDIAGVIPAEKIDGVFAACQSGSFDKLEAVVKDLIDEGHAATQLVNLQHDVVVENNLS DKQKSIITEKLAEVDKCLADGADEHLQLISLCATVMQQLSQNC
Host	Mouse
Reactivity	Human
Isotype	IgG2a Kappa
Quality Control Testing	Antibody Reactive Against Recombinant Protein. Western Blot detection against Immunogen (37.73 KDa) .
Storage Buffer	In 1x PBS, pH 7.4
Storage Instruction	Store at -20°C or lower. Aliquot to avoid repeated freezing and thawing.

Applications

- Western Blot (Cell lysate)

RFC4 monoclonal antibody (M01), clone 1C12 Western Blot analysis of RFC4 expression in K-562 (Cat # L009V1).

[Protocol Download](#)

- Western Blot (Transfected lysate)

Western Blot analysis of RFC4 expression in transfected 293T cell line by RFC4 monoclonal antibody (M01), clone 1C12.

Lane 1: RFC4 transfected lysate(39.7 KDa).

Lane 2: Non-transfected lysate.

[Protocol Download](#)

- Western Blot (Recombinant protein)

[Protocol Download](#)

- Immunohistochemistry (Formalin/PFA-fixed paraffin-embedded sections)

Immunoperoxidase of monoclonal antibody to RFC4 on formalin-fixed paraffin-embedded human tonsil. [antibody concentration 3 ug/ml]

[Protocol Download](#)

- Sandwich ELISA (Recombinant protein)

Detection limit for recombinant GST tagged RFC4 is approximately 0.3ng/ml as a capture antibody.

[Protocol Download](#)

- ELISA

- RNAi Knockdown (Antibody validated)

Western blot analysis of RFC4 over-expressed 293 cell line, cotransfected with RFC4 Validated Chimera RNAi (Cat # H00005984-R01V) (Lane 2) or non-transfected control (Lane 1). Blot probed with RFC4 monoclonal antibody (M01), clone 1C12 (Cat # H00005984-M01). GAPDH (36.1 kDa) used as specificity and loading control.

[Protocol Download](#)

Gene Info — RFC4

Entrez GeneID

[5984](#)

GeneBank Accession#	BC017452
Protein Accession#	AAH17452
Gene Name	RFC4
Gene Alias	A1, MGC27291, RFC37
Gene Description	replication factor C (activator 1) 4, 37kDa
Omim ID	102577
Gene Ontology	Hyperlink
Gene Summary	The elongation of primed DNA templates by DNA polymerase delta and DNA polymerase epsilon requires the accessory proteins proliferating cell nuclear antigen (PCNA) and replication factor C (RFC). RFC, also named activator 1, is a protein complex consisting of five distinct subunits of 140, 40, 38, 37, and 36 kD. This gene encodes the 37 kD subunit. This subunit forms a core complex with the 36 and 40 kDa subunits. The core complex possesses DNA-dependent ATPase activity, which was found to be stimulated by PCNA in an in vitro system. Alternatively spliced transcript variants encoding the same protein have been reported. [provided by RefSeq]
Other Designations	A1 37 kDa subunit RFC 37 kDa subunit activator 1 37 kDa subunit replication factor C (activator 1) 4 (37kD) replication factor C 4

Pathway

- [DNA replication](#)
- [Mismatch repair](#)
- [Nucleotide excision repair](#)

Disease

- [Genetic Predisposition to Disease](#)
- [Graft vs Host Disease](#)
- [Multiple Sclerosis](#)
- [Urinary Bladder Neoplasms](#)