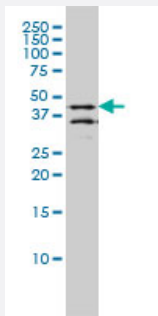


DPF2 monoclonal antibody (M01), clone 2F6

Catalog # H00005977-M01

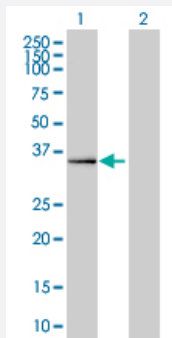
Size 100 ug

Applications



Western Blot (Cell lysate)

DPF2 monoclonal antibody (M01), clone 2F6 Western Blot analysis of DPF2 expression in LNCaP (Cat # L004V1).

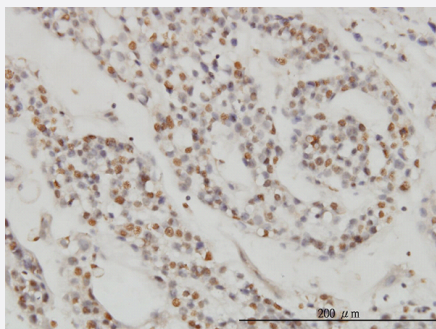


Western Blot (Transfected lysate)

Western Blot analysis of DPF2 expression in transfected 293T cell line by DPF2 monoclonal antibody (M01), clone 2F6.

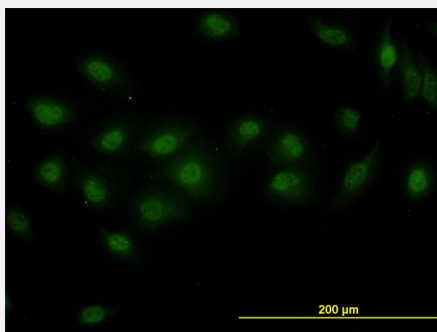
Lane 1: DPF2 transfected lysate(44 KDa).

Lane 2: Non-transfected lysate.



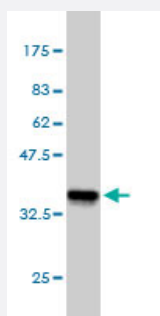
Immunohistochemistry (Formalin/PFA-fixed paraffin-embedded sections)

Immunoperoxidase of monoclonal antibody to DPF2 on formalin-fixed paraffin-embedded human ovary, clear cell carcinoma. [antibody concentration 6 ug/ml]



Immunofluorescence

Immunofluorescence of monoclonal antibody to DPF2 on HeLa cell. [antibody concentration 10 ug/ml]



Western Blot detection against Immunogen (36.63 KDa) .

Specification

Product Description	Mouse monoclonal antibody raised against a partial recombinant DPF2.
Immunogen	DPF2 (AAH14889, 56 a.a. ~ 155 a.a) partial recombinant protein with GST tag. MW of the GST tag alone is 26 KDa.
Sequence	WMEKRHRGPGGLASGQLYSYPARRWRKKRRAHPPEDPRLSFPSIKPDTDQTLKKEGLISQDGSSL EALLRTDPLEKRGAPDPRVDDDSLGEFPVTNSRARK
Host	Mouse
Reactivity	Human
Isotype	IgG2a kappa
Quality Control Testing	Antibody Reactive Against Recombinant Protein. Western Blot detection against Immunogen (36.63 KDa) .
Storage Buffer	In 1x PBS, pH 7.4
Storage Instruction	Store at -20°C or lower. Aliquot to avoid repeated freezing and thawing.

Applications

- Western Blot (Cell lysate)

DPF2 monoclonal antibody (M01), clone 2F6 Western Blot analysis of DPF2 expression in LNCaP (Cat # L004V1).

[Protocol Download](#)

- Western Blot (Transfected lysate)

Western Blot analysis of DPF2 expression in transfected 293T cell line by DPF2 monoclonal antibody (M01), clone 2F6.

Lane 1: DPF2 transfected lysate(44 KDa).

Lane 2: Non-transfected lysate.

[Protocol Download](#)

- Western Blot (Recombinant protein)

[Protocol Download](#)

- Immunohistochemistry (Formalin/PFA-fixed paraffin-embedded sections)

Immunoperoxidase of monoclonal antibody to DPF2 on formalin-fixed paraffin-embedded human ovary, clear cell carcinoma. [antibody concentration 6 ug/ml]

[Protocol Download](#)

- ELISA

- Immunofluorescence

Immunofluorescence of monoclonal antibody to DPF2 on HeLa cell. [antibody concentration 10 ug/ml]

Gene Info — DPF2

Entrez GeneID [5977](#)

GeneBank Accession# [BC014889](#)

Protein Accession# [AAH14889](#)

Gene Name DPF2

Gene Alias MGC10180, REQ, UBID4, ubi-d4

Gene Description D4, zinc and double PHD fingers family 2

Omim ID [601671](#)

Gene Ontology [Hyperlink](#)

Gene Summary

The protein encoded by this gene is a member of the d4 domain family, characterized by a zinc finger-like structural motif. This protein functions as a transcription factor which is necessary for the apoptotic response following deprivation of survival factors. It likely serves a regulatory role in rapid hematopoietic cell growth and turnover. This gene is considered a candidate gene for multiple endocrine neoplasia type I, an inherited cancer syndrome involving multiple parathyroid, enteropancreatic, and pituitary tumors. [provided by RefSeq]

Other Designations

apoptosis response zinc finger protein|requiem, apoptosis response zinc finger

Publication Reference

- [Transient and etiology-related transcription regulation in cirrhosis prior to hepatocellular carcinoma occurrence.](#)

Caillot F, Derambure C, Bioulac-Sage P, Francois A, Scotte M, Gorla O, Hiron M, Daveau M, Salier JP.

World Journal of Gastroenterology 2009 Jan; 15(3):300.

Application: IHC-P, Human, Human liver cancer