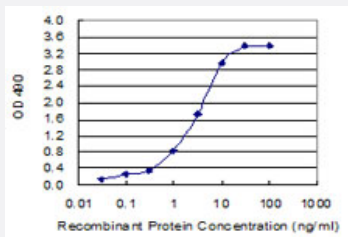


# RCVRN (Human) Matched Antibody Pair

Catalog # H00005957-AP22

Size 1 Set

## Applications



Sandwich ELISA detection sensitivity ranging from 0.03 ng/ml to 100 ng/ml.

## Specification

<b>Product Description</b>	This antibody pair set comes with a matched antibody pair to detect and quantify the protein level of human RCVRN.
<b>Reactivity</b>	Human
<b>Quality Control Testing</b>	Standard curve using recombinant protein ( H00005957-P01 ) as an analyte. Sandwich ELISA detection sensitivity ranging from 0.03 ng/ml to 100 ng/ml.
<b>Supplied Product</b>	Antibody pair set content: 1. Capture antibody: rabbit MaxPab® affinity purified polyclonal anti-RCVRN (100 ug) 2. Detection antibody: mouse purified polyclonal anti-RCVRN (20 ug) *Reagents are sufficient for at least 1-2 x 96 well plates using recommended protocols.
<b>Storage Instruction</b>	Store reagents of the antibody pair set at -20°C or lower. Please aliquot to avoid repeated freeze thaw cycle. Reagents should be returned to -20°C storage immediately after use.

## Applications

- ELISA Pair (Recombinant protein)

[Protocol Download](#)

## Gene Info — RCVRN

Entrez GeneID	<a href="#">5957</a>
Gene Name	RCVRN
Gene Alias	RCV1
Gene Description	recoverin
Omim ID	<a href="#">179618</a>
Gene Ontology	<a href="#">Hyperlink</a>
Gene Summary	<p>This gene encodes a member of the recoverin family of neuronal calcium sensors. The encoded protein contains three calcium-binding EF-hand domains and may prolong the termination of the phototransduction cascade in the retina by blocking the phosphorylation of photo-activated rhodopsin. Recoverin may be the antigen responsible for cancer-associated retinopathy. [provided by RefSeq]</p>
Other Designations	cancer associated retinopathy antigen