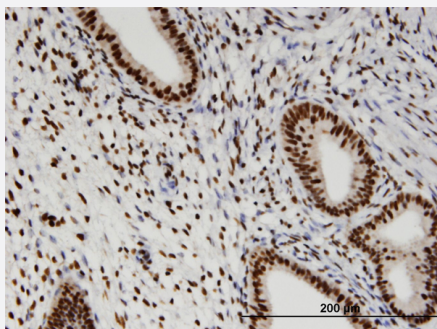


RBM3 monoclonal antibody (M06), clone 4D6

Catalog # H00005935-M06

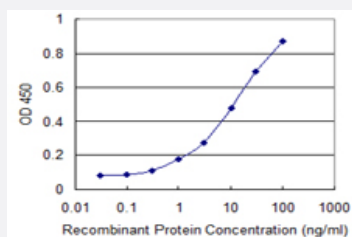
Size 100 ug

Applications



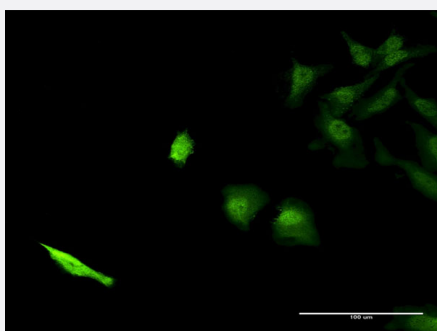
Immunohistochemistry (Formalin/PFA-fixed paraffin-embedded sections)

Immunoperoxidase of monoclonal antibody to RBM3 on formalin-fixed paraffin-embedded human endometrium. [antibody concentration 3 ug/ml]



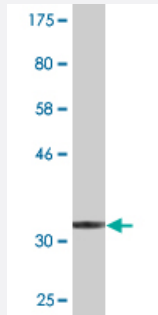
Sandwich ELISA (Recombinant protein)

Detection limit for recombinant GST tagged RBM3 is 0.1 ng/ml as a capture antibody.



Immunofluorescence

Immunofluorescence of monoclonal antibody to RBM3 on HeLa cell . [antibody concentration 40 ug/ml]



Western Blot detection against Immunogen (34.54 KDa) .

Specification

Product Description	Mouse monoclonal antibody raised against a partial recombinant RBM3.
Immunogen	RBM3 (NP_006734.1, 1 a.a. ~ 80 a.a) partial recombinant protein with GST tag. MW of the GST tag alone is 26 KDa.
Sequence	MSSEEGKLFVGGGLNFNTDEQALEDHFSSFGPISEVVVVKDRETQRSRGFGFITFTNPEHASVAM RAMNGESLDGRQIRVD
Host	Mouse
Reactivity	Human
Interspecies Antigen Sequence	Rat (99)
Isotype	IgG1 Kappa
Quality Control Testing	Antibody Reactive Against Recombinant Protein. Western Blot detection against Immunogen (34.54 KDa) .
Storage Buffer	In 1x PBS, pH 7.4
Storage Instruction	Store at -20°C or lower. Aliquot to avoid repeated freezing and thawing.

Applications

- Western Blot (Recombinant protein)

[Protocol Download](#)

- Immunohistochemistry (Formalin/PFA-fixed paraffin-embedded sections)

Immunoperoxidase of monoclonal antibody to RBM3 on formalin-fixed paraffin-embedded human endometrium. [antibody concentration 3 ug/ml]

[Protocol Download](#)

- Sandwich ELISA (Recombinant protein)

Detection limit for recombinant GST tagged RBM3 is 0.1 ng/ml as a capture antibody.

[Protocol Download](#)

- ELISA

- Immunofluorescence

Immunofluorescence of monoclonal antibody to RBM3 on HeLa cell . [antibody concentration 40 ug/ml]

Gene Info — RBM3

Entrez GeneID [5935](#)

GeneBank Accession# [NM_006743](#)

Protein Accession# [NP_006734.1](#)

Gene Name RBM3

Gene Alias IS1-RNPL, RNPL

Gene Description RNA binding motif (RNP1, RRM) protein 3

Omim ID [300027](#)

Gene Ontology [Hyperlink](#)

Gene Summary This gene is a member of the glycine-rich RNA-binding protein family and encodes a protein with one RNA recognition motif (RRM) domain. Expression of this gene is induced by cold shock and low oxygen tension. A pseudogene exists on chromosome 1. Multiple alternatively spliced transcript variants that are predicted to encode different isoforms have been characterized although some of these variants fit nonsense-mediated decay (NMD) criteria. [provided by RefSeq]

Other Designations OTTHUMP00000025800|OTTHUMP00000025802|RNA binding motif protein 3

Publication Reference

- [Differential expression of the RNA-binding motif protein 3 in human astrocytoma.](#)

Zhang HT, Zhang ZW, Xue JH, Kong HB, Liu AJ, Li SC, Liu YX, Xu DG.

Chinese Medical Journal 2013 May; 126(10):1948.

Application: IHC-P, Human, Astrocytoma, Brain