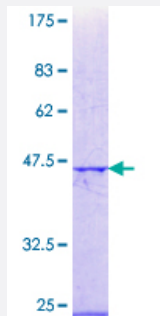


RBBP5 (Human) Recombinant Protein (Q01)

Catalog # H00005929-Q01

Size 25 ug, 10 ug

Applications



Specification

Product Description	Human RBBP5 partial ORF (NP_005048.2, 392 a.a. - 491 a.a.) recombinant protein with GST-tag at N-terminal.
Sequence	ELEDSKALLYLPIAPEVEDPEENPYGPPDAVQTSLMDEGASSEKKRQSSADGSQPPKKKPKTT NIELQGVPNDEVHPLLGVKGDGKSKKKQAGRPKGSK
Host	Wheat Germ (in vitro)
Theoretical MW (kDa)	36.74
Interspecies Antigen Sequence	Mouse (98); Rat (99)
Preparation Method	in vitro wheat germ expression system
Purification	Glutathione Sepharose 4 Fast Flow
Quality Control Testing	12.5% SDS-PAGE Stained with Coomassie Blue.
Storage Buffer	50 mM Tris-HCl, 10 mM reduced Glutathione, pH=8.0 in the elution buffer.
Storage Instruction	Store at -80°C. Aliquot to avoid repeated freezing and thawing.
Note	Best use within three months from the date of receipt of this protein.

Applications

- Enzyme-linked Immunoabsorbent Assay
- Western Blot (Recombinant protein)
- Antibody Production
- Protein Array

Gene Info — RBBP5

Entrez GeneID	5929
GeneBank Accession#	NM_005057
Protein Accession#	NP_005048.2
Gene Name	RBBP5
Gene Alias	RBQ3, SWD1
Gene Description	retinoblastoma binding protein 5
Omim ID	600697
Gene Ontology	Hyperlink
Gene Summary	The protein encoded by this gene is a ubiquitously expressed nuclear protein and belongs to a highly conserved subfamily of WD-repeat proteins. It is found among several proteins that bind directly to retinoblastoma protein, which regulates cell proliferation. The encoded protein interacts preferentially with the underphosphorylated retinoblastoma protein via the E1A-binding pocket B. [provided by RefSeq]
Other Designations	OTTHUMP00000035177 SWD1, Set1c WD40 repeat protein, homolog retinoblastoma-binding protein 5