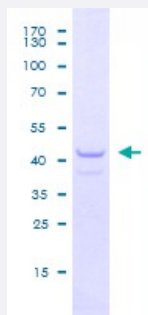


RBBP4 (Human) Recombinant Protein (Q01)

Catalog # H00005928-Q01

Size 25 ug, 10 ug

Applications



Specification

Product Description	Human RBBP4 partial ORF (NP_005601.1, 316 a.a. - 425 a.a.) recombinant protein with GST tag at N-terminal.
Sequence	HKDEIFQVQWSPHNETILASSGTDRLNVWDLISKIGEEQSPEDAEDGPPELLFIHGGHTAKISDFS WNPNEPWVICSVSEDNIMQVWQMAENYNDEDPEGSDPEGGGS
Host	Wheat Germ (in vitro)
Theoretical MW (kDa)	37.73
Preparation Method	in vitro wheat germ expression system
Purification	Glutathione Sepharose 4 Fast Flow
Quality Control Testing	12.5% SDS-PAGE Stained with Coomassie Blue
Storage Buffer	50 mM Tris-HCl, 10 mM reduced Glutathione, pH=8.0 in the elution buffer.
Storage Instruction	Store at -80°C. Aliquot to avoid repeated freezing and thawing.
Note	Best use within three months from the date of receipt of this protein.

Applications

- Enzyme-linked Immunoabsorbent Assay
- Western Blot (Recombinant protein)
- Antibody Production
- Protein Array

Gene Info — RBBP4

Entrez GeneID [5928](#)

GeneBank Accession# [NM_005610.1](#)

Protein Accession# [NP_005601.1](#)

Gene Name RBBP4

Gene Alias NURF55, RBAP48

Gene Description retinoblastoma binding protein 4

Omim ID [602923](#)

Gene Ontology [Hyperlink](#)

Gene Summary This gene encodes a ubiquitously expressed nuclear protein which belongs to a highly conserved subfamily of WD-repeat proteins. It is present in protein complexes involved in histone acetylation and chromatin assembly. It is part of the Mi-2 complex which has been implicated in chromatin remodeling and transcriptional repression associated with histone deacetylation. This encoded protein is also part of co-repressor complexes, which is an integral component of transcriptional silencing. It is found among several cellular proteins that bind directly to retinoblastoma protein to regulate cell proliferation. This protein also seems to be involved in transcriptional repression of E2F-responsive genes. Three transcript variants encoding different isoforms have been found for this gene. [provided by RefSeq]

Other Designations MSI1 protein homolog|OTTHUMP00000009691|chromatin assembly factor/CAF-1 p48 subunit|retinoblastoma-binding protein 4|retinoblastoma-binding protein p48

Disease

- [Cardiovascular Diseases](#)

- [Diabetes Mellitus](#)
- [Edema](#)