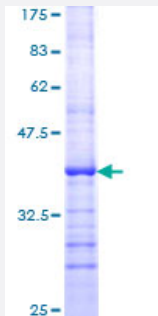


# RASGRF1 (Human) Recombinant Protein (Q01)

Catalog # H00005923-Q01

Size 10 ug, 25 ug

## Applications



## Specification

<b>Product Description</b>	Human RASGRF1 partial ORF ( NP_002882, 1 a.a. - 110 a.a.) recombinant protein with GST-tag at N-terminal.
<b>Sequence</b>	MQKGIRLNDGHVASLGLLARKDGTRKGYLSKRSSDNTKWQTKWFALLQNLLFYFESDSSSRPSG LYLLEGCVCDRAPSPKPALEKEPLEKQHYFTVNFSHENQKALELR
<b>Host</b>	Wheat Germ (in vitro)
<b>Theoretical MW (kDa)</b>	37.84
<b>Interspecies Antigen Sequence</b>	Mouse (81); Rat (80)
<b>Preparation Method</b>	<a href="#">in vitro wheat germ expression system</a>
<b>Purification</b>	Glutathione Sepharose 4 Fast Flow
<b>Quality Control Testing</b>	12.5% SDS-PAGE Stained with Coomassie Blue.
<b>Storage Buffer</b>	50 mM Tris-HCl, 10 mM reduced Glutathione, pH=8.0 in the elution buffer.
<b>Storage Instruction</b>	Store at -80°C. Aliquot to avoid repeated freezing and thawing.
<b>Note</b>	Best use within three months from the date of receipt of this protein.

## Applications

- Enzyme-linked Immunoabsorbent Assay
- Western Blot (Recombinant protein)
- Antibody Production
- Protein Array

## Gene Info — RASGRF1

Entrez GeneID [5923](#)

GeneBank Accession# [NM\\_002891](#)

Protein Accession# [NP\\_002882](#)

Gene Name RASGRF1

Gene Alias CDC25, CDC25L, GNRP, GRF1, GRF55, H-GRF55, PP13187

Gene Description Ras protein-specific guanine nucleotide-releasing factor 1

Omim ID [606600](#)

Gene Ontology [Hyperlink](#)

**Gene Summary** The protein encoded by this gene is a guanine nucleotide exchange factor (GEF) similar to the *Saccharomyces cerevisiae* CDC25 gene product. Functional analysis has demonstrated that this protein stimulates the dissociation of GDP from RAS protein. The studies of the similar gene in mouse suggested that the Ras-GEF activity of this protein in brain can be activated by Ca<sup>2+</sup> influx, muscarinic receptors, and G protein beta-gamma subunit. Mouse studies also indicated that the Ras-GEF signaling pathway mediated by this protein may be important for long-term memory. Alternatively spliced transcript variants encoding distinct isoforms have been reported. [provided by RefSeq]

**Other Designations** Ras-specific guanine nucleotide-releasing factor, CDC25 homolog|Ras-specific nucleotide exchange factor CDC25|guanine nucleotide exchange factor|guanine nucleotide-releasing factor, 55 kD

## Pathway

- [Focal adhesion](#)

- [MAPK signaling pathway](#)

## Disease

- [Genetic Predisposition to Disease](#)
- [Myopia](#)