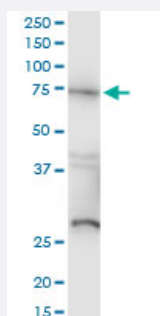


# RAF1 monoclonal antibody (M03), clone 1H4

Catalog # H00005894-M03

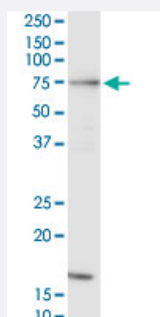
Size 100 ug

## Applications



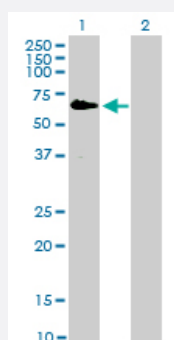
### Western Blot (Tissue lysate)

RAF1 monoclonal antibody (M03), clone 1H4. Western Blot analysis of RAF1 expression in rat brain.



### Western Blot (Cell lysate)

RAF1 monoclonal antibody (M03), clone 1H4. Western Blot analysis of RAF1 expression in HeLa.

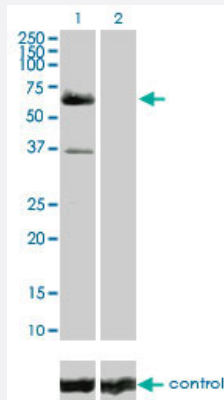


### Western Blot (Transfected lysate)

Western Blot analysis of RAF1 expression in transfected 293T cell line by RAF1 monoclonal antibody (M03), clone 1H4.

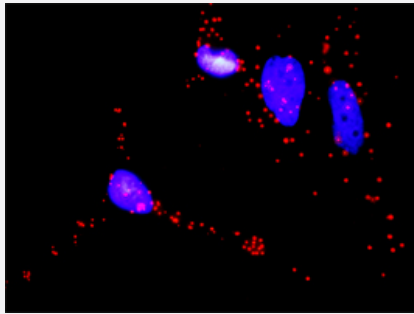
Lane 1: RAF1 transfected lysate(73.1 KDa).

Lane 2: Non-transfected lysate.



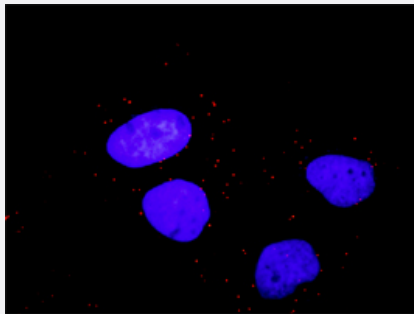
## RNAi Knockdown (Antibody validated)

Western blot analysis of RAF1 over-expressed 293 cell line, cotransfected with RAF1 Validated Chimera RNAi ( Cat # H00005894-R01V ) (Lane 2) or non-transfected control (Lane 1). Blot probed with RAF1 monoclonal antibody (M03) clone 1H4 (Cat # H00005894-M03 ). GAPDH ( 36.1 kDa ) used as specificity and loading control.



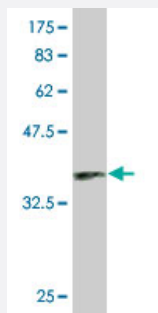
## In situ Proximity Ligation Assay (Cell)

Proximity Ligation Analysis of protein-protein interactions between BAD and RAF1. HeLa cells were stained with anti-BAD rabbit purified polyclonal 1:1200 and anti-RAF1 mouse monoclonal antibody 1:50. Each red dot represents the detection of protein-protein interaction complex, and nuclei were counterstained with DAPI (blue).



## In situ Proximity Ligation Assay (Cell)

Proximity Ligation Analysis of protein-protein interactions between PDGFRB and RAF1. Huh7 cells were stained with anti-PDGFRB rabbit purified polyclonal 1:600 and anti-RAF1 mouse monoclonal antibody 1:100. Each red dot represents the detection of protein-protein interaction complex, and nuclei were counterstained with DAPI (blue).



Western Blot detection against Immunogen (39.93 KDa) .

## Specification

### Product Description

Mouse monoclonal antibody raised against a partial recombinant RAF1.

### Immunogen

RAF1 (AAH18119, 1 a.a. ~ 130 a.a) partial recombinant protein with GST tag. MW of the GST tag alone is 26 KDa.

Sequence	MEHIQGAWKTISNGFGFKDAVFDGSSCISPTVQQFGYQRRASDDGKLTDPSTKTSNTIRVFLPNKQ RTVVNVRNGMSLHDCLMKALKVRGLQPECCAVFRLLEHKGGKARLDWNTDAASLIGEELQVDF
Host	Mouse
Reactivity	Human, Rat
Isotype	IgG2b Kappa
Quality Control Testing	Antibody Reactive Against Recombinant Protein. Western Blot detection against Immunogen (39.93 KDa) .
Storage Buffer	In 1x PBS, pH 7.4
Storage Instruction	Store at -20°C or lower. Aliquot to avoid repeated freezing and thawing.

## Applications

- Western Blot (Tissue lysate)

RAF1 monoclonal antibody (M03), clone 1H4. Western Blot analysis of RAF1 expression in rat brain.

[Protocol Download](#)

- Western Blot (Cell lysate)

RAF1 monoclonal antibody (M03), clone 1H4. Western Blot analysis of RAF1 expression in HeLa.

[Protocol Download](#)

- Western Blot (Transfected lysate)

Western Blot analysis of RAF1 expression in transfected 293T cell line by RAF1 monoclonal antibody (M03), clone 1H4.

Lane 1: RAF1 transfected lysate(73.1 KDa).

Lane 2: Non-transfected lysate.

[Protocol Download](#)

- Western Blot (Recombinant protein)

[Protocol Download](#)

- ELISA

- RNAi Knockdown (Antibody validated)

Western blot analysis of RAF1 over-expressed 293 cell line, cotransfected with RAF1 Validated Chimera RNAi ( Cat # H00005894-R01V ) (Lane 2) or non-transfected control (Lane 1). Blot probed with RAF1 monoclonal antibody (M03) clone 1H4 (Cat # H00005894-M03 ). GAPDH ( 36.1 kDa ) used as specificity and loading control.

[Protocol Download](#)

- *In situ* Proximity Ligation Assay (Cell)

Proximity Ligation Analysis of protein-protein interactions between BAD and RAF1. HeLa cells were stained with anti-BAD rabbit purified polyclonal 1:1200 and anti-RAF1 mouse monoclonal antibody 1:50. Each red dot represents the detection of protein-protein interaction complex, and nuclei were counterstained with DAPI (blue).

- *In situ* Proximity Ligation Assay (Cell)

Proximity Ligation Analysis of protein-protein interactions between PDGFRB and RAF1. Huh7 cells were stained with anti-PDGFRB rabbit purified polyclonal 1:600 and anti-RAF1 mouse monoclonal antibody 1:100. Each red dot represents the detection of protein-protein interaction complex, and nuclei were counterstained with DAPI (blue).

## Gene Info — RAF1

Entrez GeneID [5894](#)

GeneBank Accession# [BC018119](#)

Protein Accession# [AAH18119](#)

Gene Name RAF1

Gene Alias CRAF, NS5, Raf-1, c-Raf

Gene Description v-raf-1 murine leukemia viral oncogene homolog 1

Omim ID [164760 611553 611554](#)

Gene Ontology [Hyperlink](#)

**Gene Summary** This gene is the cellular homolog of viral raf gene (v-raf). The encoded protein is a MAP kinase kinase kinase (MAP3K), which functions downstream of the Ras family of membrane associated GTPases to which it binds directly. Once activated, the cellular RAF1 protein can phosphorylate to activate the dual specificity protein kinases MEK1 and MEK2, which in turn phosphorylate to activate the serine/threonine specific protein kinases, ERK1 and ERK2. Activated ERKs are pleiotropic effectors of cell physiology and play an important role in the control of gene expression involved in the cell division cycle, apoptosis, cell differentiation and cell migration. Mutations in this gene are associated with Noonan syndrome 5 and LEOPARD syndrome 2. [provided by RefSeq]

**Other Designations** Oncogene RAF1|raf proto-oncogene serine/threonine protein kinase

## Pathway

- [Acute myeloid leukemia](#)
- [B cell receptor signaling pathway](#)
- [Bladder cancer](#)
- [Chemokine signaling pathway](#)
- [Chronic myeloid leukemia](#)
- [Colorectal cancer](#)
- [Endometrial cancer](#)
- [ErbB signaling pathway](#)
- [Fc epsilon RI signaling pathway](#)
- [Fc gamma R-mediated phagocytosis](#)
- [Focal adhesion](#)
- [Gap junction](#)
- [Glioma](#)
- [GnRH signaling pathway](#)
- [Insulin signaling pathway](#)
- [Long-term depression](#)
- [Long-term potentiation](#)
- [MAPK signaling pathway](#)
- [Melanogenesis](#)
- [Melanoma](#)
- [Natural killer cell mediated cytotoxicity](#)
- [Neurotrophin signaling pathway](#)
- [Non-small cell lung cancer](#)
- [Pancreatic cancer](#)

- [Pathways in cancer](#)
- [Prostate cancer](#)
- [Regulation of actin cytoskeleton](#)
- [Renal cell carcinoma](#)
- [T cell receptor signaling pathway](#)
- [Vascular smooth muscle contraction](#)
- [VEGF signaling pathway](#)

## Disease

- [Abnormalities](#)
- [Arrhythmias](#)
- [Articulation Disorders](#)
- [Cardiovascular Diseases](#)
- [Cognition](#)
- [Cognition Disorders](#)
- [Developmental Disabilities](#)
- [Diabetes Mellitus](#)
- [Dyslexia](#)
- [Edema](#)
- [Genetic Predisposition to Disease](#)
- [Glioma](#)
- [Hearing](#)
- [Heart Defects](#)
- [Hypertrophy](#)
- [Language Disorders](#)
- [LEOPARD Syndrome](#)

- [Memory](#)
- [Motor Skills](#)
- [Noonan Syndrome](#)
- [Skin Abnormalities](#)
- [Thyroid Neoplasms](#)