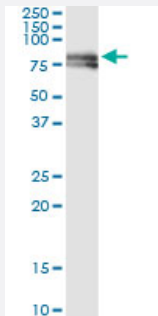


# PTK2 (Human) IP-WB Antibody Pair

Catalog # H00005747-PW1

Size 1 Set

## Applications



Immunoprecipitation of PTK2 transfected lysate using mouse monoclonal anti-PTK2 and Protein A Magnetic Bead ([U0007](#)), and immunoblotted with rabbit polyclonal anti-PTK2.

## Specification

<b>Product Description</b>	This IP-WB antibody pair set comes with one antibody for immunoprecipitation and another to detect the precipitated protein in western blot.
<b>Reactivity</b>	Human
<b>Quality Control Testing</b>	Immunoprecipitation-Western Blot (IP-WB) Immunoprecipitation of PTK2 transfected lysate using mouse monoclonal anti-PTK2 and Protein A Magnetic Bead ( <a href="#">U0007</a> ), and immunoblotted with rabbit polyclonal anti-PTK2.
<b>Supplied Product</b>	Antibody pair set content: 1. Antibody pair for IP: mouse monoclonal anti-PTK2 (300 ug) 2. Antibody pair for WB: rabbit polyclonal anti-PTK2 (50 ul)
<b>Storage Instruction</b>	Store reagents of the antibody pair set at -20°C or lower. Please aliquot to avoid repeated freeze thaw cycle. Reagents should be returned to -20°C storage immediately after use.

## Applications

- Immunoprecipitation-Western Blot

[Protocol Download](#)

## Gene Info — PTK2

Entrez GeneID [5747](#)

Gene Name PTK2

Gene Alias FADK, FAK, FAK1, pp125FAK

Gene Description PTK2 protein tyrosine kinase 2

Omim ID [600758](#)

Gene Ontology [Hyperlink](#)

**Gene Summary**

This gene encodes a cytoplasmic protein tyrosine kinase which is found concentrated in the focal adhesions that form between cells growing in the presence of extracellular matrix constituents. The encoded protein is a member of the FAK subfamily of protein tyrosine kinases but lacks significant sequence similarity to kinases from other subfamilies. Activation of this gene may be an important early step in cell growth and intracellular signal transduction pathways triggered in response to certain neural peptides or to cell interactions with the extracellular matrix. At least four transcript variants encoding four different isoforms have been found for this gene, but the full-length nature of only two of them have been determined. [provided by RefSeq]

**Other Designations** focal adhesion kinase 1

## Pathway

- [Axon guidance](#)
- [Chemokine signaling pathway](#)
- [ErbB signaling pathway](#)
- [Focal adhesion](#)
- [Leukocyte transendothelial migration](#)
- [Pathways in cancer](#)
- [Regulation of actin cytoskeleton](#)
- [Small cell lung cancer](#)
- [VEGF signaling pathway](#)

## Disease

- [Autistic Disorder](#)
- [Genetic Predisposition to Disease](#)
- [HIV Infections](#)
- [Leukemia](#)
- [Mental Retardation](#)
- [Neovascularization](#)
- [Psychotic Disorders](#)
- [Schizophrenia](#)