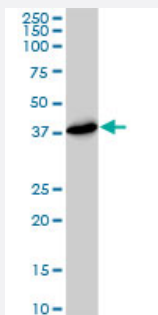


# PSMD7 monoclonal antibody (M01), clone 2G5

Catalog # H00005713-M01

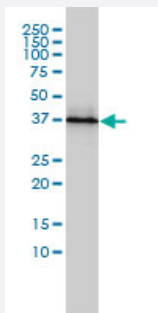
Size 100 ug

## Applications



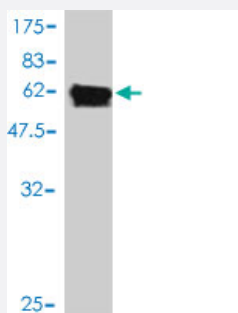
### Western Blot (Cell lysate)

PSMD7 monoclonal antibody (M01), clone 2G5. Western Blot analysis of PSMD7 expression in HeLa S3 NE ( Cat # L013V3 ).



### Western Blot (Cell lysate)

PSMD7 monoclonal antibody (M01), clone 2G5 Western Blot analysis of PSMD7 expression in Jurkat ( Cat # L017V1 ).



Western Blot detection against Immunogen (61.38 kDa) .

## Specification

### Product Description

Mouse monoclonal antibody raised against a full length recombinant PSMD7.

<b>Immunogen</b>	PSMD7 (AAH12606, 1 a.a. ~ 324 a.a) full-length recombinant protein with GST tag. MW of the GST tag alone is 26 KDa.
<b>Sequence</b>	<p>MP ELAVQKV VVHPLVLLSVVDHFN RIGKVGNQKR VVGVL LGSWQKKVLDVSN SFAVPFDEDDK</p> <p>DDSVWFLDHDYLENMYGMFKV NARERIVGWYHTGPKLHKNDIAINELMKRYCPNSVLVIIDVKPK</p> <p>DLGLPTEAYISVEEVHDDGTPTSKTFEHVTSEIGAEAEAEVGV EHL LRDIDT T VGTLSQRITNQVH</p> <p>GLKGLNSKLLDIRSYLEKVATGKLPINH QIYQLQDVFNLLPDVSLQEFVKAFY LKTNDQM VVYLAS</p> <p>LIRSVVALHNLINNKIADRDAEKKEGQEKEESKKDRKEDKEKD KDEKSDVKKEEKKEKK</p>
<b>Host</b>	Mouse
<b>Reactivity</b>	Human
<b>Interspecies Antigen Sequence</b>	Mouse (97); Rat (96)
<b>Isotype</b>	IgG1 kappa
<b>Quality Control Testing</b>	Antibody Reactive Against Recombinant Protein. Western Blot detection against Immunogen (61.38 KDa) .
<b>Storage Buffer</b>	In 1x PBS, pH 7.4
<b>Storage Instruction</b>	Store at -20°C or lower. Aliquot to avoid repeated freezing and thawing.

## Applications

- Western Blot (Cell lysate)

PSMD7 monoclonal antibody (M01), clone 2G5. Western Blot analysis of PSMD7 expression in Hela S3 NE ( Cat # L013V3 ).

[Protocol Download](#)

- Western Blot (Cell lysate)

PSMD7 monoclonal antibody (M01), clone 2G5 Western Blot analysis of PSMD7 expression in Jurkat ( Cat # L017V1 ).

[Protocol Download](#)

- Western Blot (Recombinant protein)

[Protocol Download](#)

- ELISA

## Gene Info — PSMD7

Entrez GeneID	<a href="#">5713</a>
GeneBank Accession#	<a href="#">BC012606</a>
Protein Accession#	<a href="#">AAH12606</a>
Gene Name	PSMD7
Gene Alias	MOV34, P40, Rpn8, S12
Gene Description	proteasome (prosome, macropain) 26S subunit, non-ATPase, 7
Omim ID	<a href="#">157970</a>
Gene Ontology	<a href="#">Hyperlink</a>
Gene Summary	<p>The 26S proteasome is a multicatalytic proteinase complex with a highly ordered structure composed of 2 complexes, a 20S core and a 19S regulator. The 20S core is composed of 4 rings of 28 non-identical subunits; 2 rings are composed of 7 alpha subunits and 2 rings are composed of 7 beta subunits. The 19S regulator is composed of a base, which contains 6 ATPase subunits and 2 non-ATPase subunits, and a lid, which contains up to 10 non-ATPase subunits. Proteasomes are distributed throughout eukaryotic cells at a high concentration and cleave peptides in an ATP/ubiquitin-dependent process in a non-lysosomal pathway. An essential function of a modified proteasome, the immunoproteasome, is the processing of class I MHC peptides. This gene encodes a non-ATPase subunit of the 19S regulator. A pseudogene has been identified on chromosome 17. [provided by RefSeq]</p>
Other Designations	26S proteasome non-ATPase regulatory subunit 7 26S proteasome regulatory subunit S12 Moloney leukemia virus-34 proviral integration Mov34 homolog proteasome (prosome, macropain) 26S subunit, non-ATPase, 7 (Mov34 homolog) proteasome 26S non-ATPase subunit

## Pathway

- [Proteasome](#)

## Disease

- [Genetic Predisposition to Disease](#)