

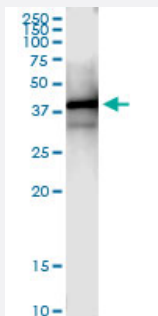
MaxPab®

## PSMD7 MaxPab rabbit polyclonal antibody (D01)

Catalog # H00005713-D01

Size 100 uL

### Applications



#### Immunoprecipitation

Immunoprecipitation of PSMD7 transfected lysate using anti-PSMD7 MaxPab rabbit polyclonal antibody and Protein A Magnetic Bead, and immunoblotted with PSMD7 MaxPab mouse polyclonal antibody (B01) ([H00005713-B01](#)).

### Specification

<b>Product Description</b>	Rabbit polyclonal antibody raised against a full-length human PSMD7 protein.
<b>Immunogen</b>	PSMD7 (NP_002802.2, 1 a.a. ~ 324 a.a) full-length human protein.
<b>Sequence</b>	<p>MP ELAVQKV VVHPLVLLSVVDHFNRIKVG NQKR VVG VLLGSWQKKVLDVSN SFAVPFDEDDK</p> <p>DDSVWFLDHDYLENMYGMFKKVNARERIVGWYHTGPKLHKNDIAINELMKRYCPNSVLVIIDVKPK</p> <p>DLGLPTEAYISVEEVHDDGTPTSKTFEHVTSEIGAEAEVEGV EHL LRD IKD TTVGTLSQRITNQVH</p> <p>GLKGLNSKLLDIRSYLEKVATGKLPINH QIYQLQDVFNLLPDVSLQEFVKAFY LKTNDQM VVYLAS</p> <p>LIRSVVALHNLINNKIANRDAEKKEGQEKEESKKDRKEDKEKDKDKEKSDVKKEEKKEKK</p>
<b>Host</b>	Rabbit
<b>Reactivity</b>	Human
<b>Interspecies Antigen Sequence</b>	Mouse (97); Rat (97)
<b>Quality Control Testing</b>	Antibody reactive against mammalian transfected lysate.
<b>Storage Buffer</b>	No additive
<b>Storage Instruction</b>	Store at -20°C or lower. Aliquot to avoid repeated freezing and thawing.

## Applications

- Immunoprecipitation

Immunoprecipitation of PSMD7 transfected lysate using anti-PSMD7 MaxPab rabbit polyclonal antibody and Protein A Magnetic Bead, and immunoblotted with PSMD7 MaxPab mouse polyclonal antibody (B01) ([H00005713-B01](#)).

[Protocol Download](#)

## Gene Info — PSMD7

Entrez GeneID	<a href="#">5713</a>
GeneBank Accession#	<a href="#">NM_002811</a>
Protein Accession#	<a href="#">NP_002802.2</a>
Gene Name	PSMD7
Gene Alias	MOV34, P40, Rpn8, S12
Gene Description	proteasome (prosome, macropain) 26S subunit, non-ATPase, 7
Omim ID	<a href="#">157970</a>
Gene Ontology	<a href="#">Hyperlink</a>
Gene Summary	The 26S proteasome is a multicatalytic proteinase complex with a highly ordered structure composed of 2 complexes, a 20S core and a 19S regulator. The 20S core is composed of 4 rings of 28 non-identical subunits; 2 rings are composed of 7 alpha subunits and 2 rings are composed of 7 beta subunits. The 19S regulator is composed of a base, which contains 6 ATPase subunits and 2 non-ATPase subunits, and a lid, which contains up to 10 non-ATPase subunits. Proteasomes are distributed throughout eukaryotic cells at a high concentration and cleave peptides in an ATP/ubiquitin-dependent process in a non-lysosomal pathway. An essential function of a modified proteasome, the immunoproteasome, is the processing of class I MHC peptides. This gene encodes a non-ATPase subunit of the 19S regulator. A pseudogene has been identified on chromosome 17. [provided by RefSeq]
Other Designations	26S proteasome non-ATPase regulatory subunit 7 26S proteasome regulatory subunit S12 Moloney leukemia virus-34 proviral integration Mov34 homolog proteasome (prosome, macropain) 26S subunit, non-ATPase, 7 (Mov34 homolog) proteasome 26S non-ATPase subunit

## Pathway

- [Proteasome](#)

## Disease

- [Genetic Predisposition to Disease](#)