

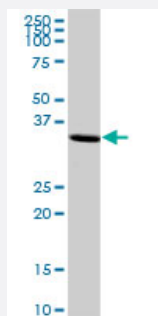
MaxPab®

# PSMD7 MaxPab mouse polyclonal antibody (B01P)

Catalog # H00005713-B01P

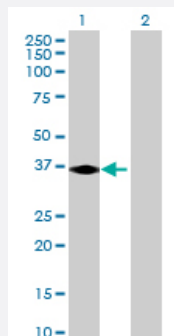
Size 50 ug

## Applications



### Western Blot (Tissue lysate)

PSMD7 MaxPab polyclonal antibody. Western Blot analysis of PSMD7 expression in human liver.



### Western Blot (Transfected lysate)

Western Blot analysis of PSMD7 expression in transfected 293T cell line ([H00005713-T01](#)) by PSMD7 MaxPab polyclonal antibody.

Lane 1: PSMD7 transfected lysate(35.64 KDa).

Lane 2: Non-transfected lysate.

## Specification

### Product Description

Mouse polyclonal antibody raised against a full-length human PSMD7 protein.

### Immunogen

PSMD7 (NP\_002802, 1 a.a. ~ 324 a.a) full-length human protein.

### Sequence

MPELAVQKVVVHPLVLLSVVDHFNRIKVGNGQKRIVGVLLGSWQKKVLDVSNSFAVPFDEDDK  
DDSVWFLDHDYLENMYGMFKVNRERIVGWYHTGPKLHKNDIANELMKRYCPNSVLVIDVKPK  
DLGLPTEAYISVEEVHDDGTPSTKTFEHVTSEIGAEAAEEVGVEHLLRDIKDTTVGTLSQRITNQVH  
GLKGLNSKLLDIRSYLEKVATGKLPINHQIYQLQDVFNLLPDVSLQEFVKAFYFKTNDQMVMVYLAS  
LIRSVVALHNLINNKIANRDAEKKEGQEKEESKKDRKEDKEKDKDEKSDVKKEEKKEKK

### Host

Mouse

Reactivity	Human
Interspecies Antigen Sequence	Mouse (97); Rat (97)
Quality Control Testing	Antibody reactive against mammalian transfected lysate.
Storage Buffer	In 1x PBS, pH 7.4
Storage Instruction	Store at -20°C or lower. Aliquot to avoid repeated freezing and thawing.

## Applications

- Western Blot (Tissue lysate)

PSMD7 MaxPab polyclonal antibody. Western Blot analysis of PSMD7 expression in human liver.

[Protocol Download](#)

- Western Blot (Transfected lysate)

Western Blot analysis of PSMD7 expression in transfected 293T cell line ([H00005713-T01](#)) by PSMD7 MaxPab polyclonal antibody.

Lane 1: PSMD7 transfected lysate(35.64 KDa).

Lane 2: Non-transfected lysate.

[Protocol Download](#)

## Gene Info — PSMD7

Entrez GeneID	<a href="#">5713</a>
GeneBank Accession#	<a href="#">NM_002811</a>
Protein Accession#	<a href="#">NP_002802</a>
Gene Name	PSMD7
Gene Alias	MOV34, P40, Rpn8, S12
Gene Description	proteasome (prosome, macropain) 26S subunit, non-ATPase, 7
Omim ID	<a href="#">157970</a>
Gene Ontology	<a href="#">Hyperlink</a>

**Gene Summary**

The 26S proteasome is a multicatalytic proteinase complex with a highly ordered structure composed of 2 complexes, a 20S core and a 19S regulator. The 20S core is composed of 4 rings of 28 non-identical subunits; 2 rings are composed of 7 alpha subunits and 2 rings are composed of 7 beta subunits. The 19S regulator is composed of a base, which contains 6 ATPase subunits and 2 non-ATPase subunits, and a lid, which contains up to 10 non-ATPase subunits. Proteasomes are distributed throughout eukaryotic cells at a high concentration and cleave peptides in an ATP/ubiquitin-dependent process in a non-lysosomal pathway. An essential function of a modified proteasome, the immunoproteasome, is the processing of class I MHC peptides. This gene encodes a non-ATPase subunit of the 19S regulator. A pseudogene has been identified on chromosome 17. [provided by RefSeq]

**Other Designations**

26S proteasome non-ATPase regulatory subunit 7|26S proteasome regulatory subunit S12|Moloney leukemia virus-34 proviral integration|Mov34 homolog|proteasome (prosome, macropain) 26S subunit, non-ATPase, 7 (Mov34 homolog)|proteasome 26S non-ATPase subunit

**Pathway**

- [Proteasome](#)

**Disease**

- [Genetic Predisposition to Disease](#)