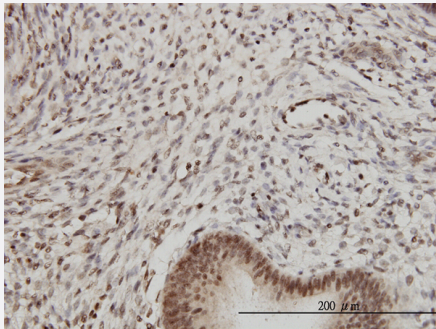


PSMB2 monoclonal antibody (M02), clone M1

Catalog # H00005690-M02

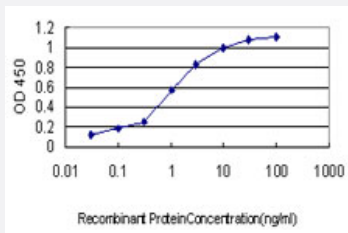
Size 100 ug

Applications



Immunohistochemistry (Formalin/PFA-fixed paraffin-embedded sections)

Immunoperoxidase of monoclonal antibody to PSMB2 on formalin-fixed paraffin-embedded human endometrium.[antibody concentration 3 ug/ml]



Sandwich ELISA (Recombinant protein)

Detection limit for recombinant GST tagged PSMB2 is approximately 0.03ng/ml as a capture antibody.

Specification

Product Description	Mouse monoclonal antibody raised against a full length recombinant PSMB2.
Immunogen	PSMB2 (AAH00268, 1 a.a. ~ 201 a.a) full-length recombinant protein with GST tag. MW of the GST tag alone is 26 KDa.
Sequence	MEYLIGIQGPDYVLVASDRVAASNIVQMKDDHDKMFKMSEKILLLCVGEAGDTVQFAEYIQKNVQLYKMRNGYELSPATAANFTRRNLDCLRSRTPYHVNLLLAGYDEHEGPALYYMDYLAALAKAPFAAHGYGAFLTLSILDYRPTISRERAVELLRKCLEELQKRFILNLPTFSVRIIDKNGIHDLDNISFPKQGS
Host	Mouse
Reactivity	Human

Isotype	IgG1 Kappa
Quality Control Testing	Antibody Reactive Against Recombinant Protein.
Storage Buffer	In 1x PBS, pH 7.4
Storage Instruction	Store at -20°C or lower. Aliquot to avoid repeated freezing and thawing.

Applications

- Immunohistochemistry (Formalin/PFA-fixed paraffin-embedded sections)

Immunoperoxidase of monoclonal antibody to PSMB2 on formalin-fixed paraffin-embedded human endometrium.[antibody concentration 3 ug/ml]

[Protocol Download](#)

- Sandwich ELISA (Recombinant protein)

Detection limit for recombinant GST tagged PSMB2 is approximately 0.03ng/ml as a capture antibody.

[Protocol Download](#)

- ELISA

Gene Info — PSMB2

Entrez GeneID	5690
GeneBank Accession#	BC000268
Protein Accession#	AAH00268
Gene Name	PSMB2
Gene Alias	HC7-I, MGC104215, MGC126885
Gene Description	proteasome (prosome, macropain) subunit, beta type, 2
Omim ID	602175
Gene Ontology	Hyperlink

Gene Summary

The proteasome is a multicatalytic proteinase complex with a highly ordered ring-shaped 20S core structure. The core structure is composed of 4 rings of 28 non-identical subunits; 2 rings are composed of 7 alpha subunits and 2 rings are composed of 7 beta subunits. Proteasomes are distributed throughout eukaryotic cells at a high concentration and cleave peptides in an ATP/ubiquitin-dependent process in a non-lysosomal pathway. An essential function of a modified proteasome, the immunoproteasome, is the processing of class I MHC peptides. This gene encodes a member of the proteasome B-type family, also known as the T1B family, that is a 20S core beta subunit. [provided by RefSeq]

Other Designations

OTTHUMP00000004345|macropain subunit C7-|multicatalytic endopeptidase complex subunit C7-1|proteasome beta 2 subunit|proteasome component C7-|proteasome subunit, beta type, 2

Pathway

- [Proteasome](#)