

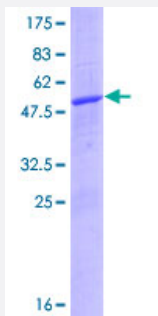
Full-Length

# PSMB1 (Human) Recombinant Protein (P01)

Catalog # H00005689-P01

Size 25 ug, 10 ug

## Applications



## Specification

<b>Product Description</b>	Human PSMB1 full-length ORF ( NP_002784.1, 1 a.a. - 241 a.a.) recombinant protein with GST-tag at N-terminal.
<b>Sequence</b>	MLSSTAMYSAPGRDLGMEPHRAAGPLQLRFSPYVFNGGTILAIAGEDFAMASDTRLSEGFSIHTR DSPKCYKLTDKTVIGCSGFHGDCLTLTKIIEARLKMYKHSNNKAMTTGAIAAMLSTILYSRRFFPYV YNIIGGLDEEGKGAVYSFDPVGSYQRDSFKAGGSASAMLQPLLDNQVGFKNMQNVEHVPLSLDR AMRLVKDVFISAAERDVYTGDALRICIVTKEGIREETVSLRKD
<b>Host</b>	Wheat Germ (in vitro)
<b>Theoretical MW (kDa)</b>	52.9
<b>Interspecies Antigen Sequence</b>	Mouse (94); Rat (92)
<b>Preparation Method</b>	<a href="#">in vitro wheat germ expression system</a>
<b>Purification</b>	Glutathione Sepharose 4 Fast Flow
<b>Quality Control Testing</b>	12.5% SDS-PAGE Stained with Coomassie Blue.
<b>Storage Buffer</b>	50 mM Tris-HCl, 10 mM reduced Glutathione, pH=8.0 in the elution buffer.
<b>Storage Instruction</b>	Store at -80°C. Aliquot to avoid repeated freezing and thawing.

## Note

Best use within three months from the date of receipt of this protein.

## Applications

- Enzyme-linked Immunoabsorbent Assay
- Western Blot (Recombinant protein)
- Antibody Production
- Protein Array

## Gene Info — PSMB1

Entrez GeneID [5689](#)

GeneBank Accession# [NM\\_002793.2](#)

Protein Accession# [NP\\_002784.1](#)

Gene Name PSMB1

Gene Alias FLJ25321, HC5, KIAA1838, PMSB1, PSC5

Gene Description proteasome (prosome, macropain) subunit, beta type, 1

Omim ID [602017](#)

Gene Ontology [Hyperlink](#)

**Gene Summary**

The proteasome is a multicatalytic proteinase complex with a highly ordered ring-shaped 20S core structure. The core structure is composed of 4 rings of 28 non-identical subunits; 2 rings are composed of 7 alpha subunits and 2 rings are composed of 7 beta subunits. Proteasomes are distributed throughout eukaryotic cells at a high concentration and cleave peptides in an ATP/ubiquitin-dependent process in a non-lysosomal pathway. An essential function of a modified proteasome, the immunoproteasome, is the processing of class I MHC peptides. This gene encodes a member of the proteasome B-type family, also known as the T1B family, that is a 20S core beta subunit. This gene is tightly linked to the TBP (TATA-binding protein) gene in human and in mouse, and is transcribed in the opposite orientation in both species. [provided by RefSeq]

**Other Designations**

macropain subunit C5|multicatalytic endopeptidase complex subunit C5|proteasome beta 1 subunit|proteasome component C5|proteasome gamma chain|proteasome subunit HC5

## Pathway

- [Proteasome](#)

## Disease

- [Diabetes Mellitus](#)
- [Genetic Predisposition to Disease](#)
- [Kidney Failure](#)