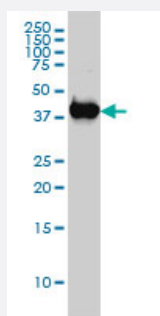


# MAPK13 monoclonal antibody (M02), clone 2D8

Catalog # H00005603-M02

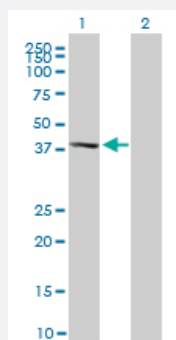
Size 100 ug

## Applications



### Western Blot (Cell lysate)

MAPK13 monoclonal antibody (M02), clone 2D8 Western Blot analysis of MAPK13 expression in MCF-7 ( Cat # L046V1 ).

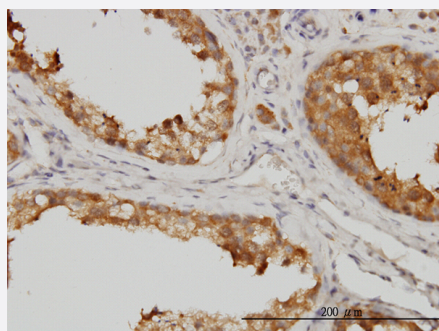


### Western Blot (Transfected lysate)

Western Blot analysis of MAPK13 expression in transfected 293T cell line by MAPK13 monoclonal antibody (M02), clone 2D8.

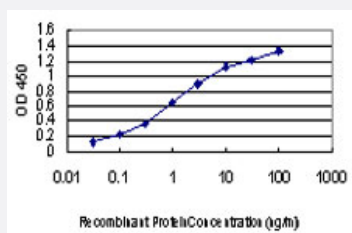
Lane 1: MAPK13 transfected lysate(42.1 KDa).

Lane 2: Non-transfected lysate.



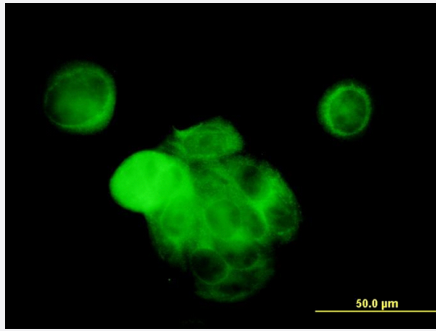
### Immunohistochemistry (Formalin/PFA-fixed paraffin-embedded sections)

Immunoperoxidase of monoclonal antibody to MAPK13 on formalin-fixed paraffin-embedded human testis. [antibody concentration 1 ug/ml]



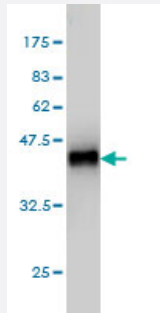
### Sandwich ELISA (Recombinant protein)

Detection limit for recombinant GST tagged MAPK13 is approximately 0.1ng/ml as a capture antibody.



## Immunofluorescence

Immunofluorescence of monoclonal antibody to MAPK13 on MCF-7 cell .  
[antibody concentration 10 ug/ml]



Western Blot detection against Immunogen (38.28 KDa) .

## Specification

<b>Product Description</b>	Mouse monoclonal antibody raised against a partial recombinant MAPK13.
<b>Immunogen</b>	MAPK13 (AAH00433, 251 a.a. ~ 365 a.a) partial recombinant protein with GST tag. MW of the GST tag alone is 26 KDa.
<b>Sequence</b>	NDKAAKSYQSLPQTTPRKDFTQLFPRASPQAADLLEKMLELDVDRRLTAAQALTHPFFEPFRDPE EETEAQQPFDDSL EHEKLTVD EWKQH IYKEIVNFSP IARKDSRRRSGMKL
<b>Host</b>	Mouse
<b>Reactivity</b>	Human
<b>Isotype</b>	IgG2b Kappa
<b>Quality Control Testing</b>	Antibody Reactive Against Recombinant Protein. Western Blot detection against Immunogen (38.28 KDa) .
<b>Storage Buffer</b>	In 1x PBS, pH 7.4
<b>Storage Instruction</b>	Store at -20°C or lower. Aliquot to avoid repeated freezing and thawing.

## Applications

- Western Blot (Cell lysate)

MAPK13 monoclonal antibody (M02), clone 2D8 Western Blot analysis of MAPK13 expression in MCF-7 ( Cat # L046V1 ).

[Protocol Download](#)

- Western Blot (Transfected lysate)

Western Blot analysis of MAPK13 expression in transfected 293T cell line by MAPK13 monoclonal antibody (M02), clone 2D8.

Lane 1: MAPK13 transfected lysate(42.1 KDa).

Lane 2: Non-transfected lysate.

[Protocol Download](#)

- Western Blot (Recombinant protein)

[Protocol Download](#)

- Immunohistochemistry (Formalin/PFA-fixed paraffin-embedded sections)

Immunoperoxidase of monoclonal antibody to MAPK13 on formalin-fixed paraffin-embedded human testis. [antibody concentration 1 ug/ml]

[Protocol Download](#)

- Sandwich ELISA (Recombinant protein)

Detection limit for recombinant GST tagged MAPK13 is approximately 0.1ng/ml as a capture antibody.

[Protocol Download](#)

- ELISA

- Immunofluorescence

Immunofluorescence of monoclonal antibody to MAPK13 on MCF-7 cell . [antibody concentration 10 ug/ml]

## Gene Info — MAPK13

**Entrez GeneID** [5603](#)

**GeneBank Accession#** [BC000433](#)

**Protein Accession#** [AAH00433](#)

**Gene Name** MAPK13

**Gene Alias** MGC99536, PRKM13, SAPK4, p38delta

Gene Description	mitogen-activated protein kinase 13
Omim ID	<a href="#">602899</a>
Gene Ontology	<a href="#">Hyperlink</a>
Gene Summary	The protein encoded by this gene is a member of the MAP kinase family. MAP kinases act as an integration point for multiple biochemical signals, and are involved in a wide variety of cellular processes such as proliferation, differentiation, transcription regulation and development. This kinase is closely related to p38 MAP kinase, both of which can be activated by proinflammatory cytokines and cellular stress. MAP kinase kinases 3, and 6 can phosphorylate and activate this kinase. Transcription factor ATF2, and microtubule dynamics regulator stathmin have been shown to be the substrates of this kinase. [provided by RefSeq]
Other Designations	OTTHUMP00000016282 mitogen-activated protein kinase p38 delta stress-activated protein kinase 4

## Pathway

- [Amyotrophic lateral sclerosis \(ALS\)](#)
- [Epithelial cell signaling in Helicobacter pylori infection](#)
- [Fc epsilon RI signaling pathway](#)
- [GnRH signaling pathway](#)
- [Leukocyte transendothelial migration](#)
- [MAPK signaling pathway](#)
- [Neurotrophin signaling pathway](#)
- [T cell receptor signaling pathway](#)
- [Toll-like receptor signaling pathway](#)
- [VEGF signaling pathway](#)

## Disease

- [Cardiovascular Diseases](#)
- [Diabetes Mellitus](#)
- [Edema](#)

- [HIV Infections](#)