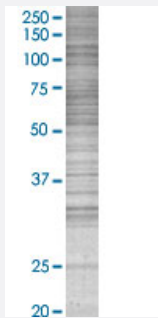


MAPK9 293T Cell Transient Overexpression Lysate(Denatured)

Catalog # H00005601-T01

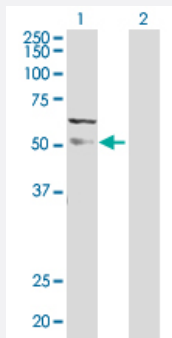
Size 100 uL

Applications



SDS-PAGE Gel

MAPK9 transfected lysate.



Western Blot

Lane 1: MAPK9 transfected lysate (48.10 KDa)

Lane 2: Non-transfected lysate.

Specification

Transfected Cell Line	293T
Plasmid	pCMV-MAPK9 full-length
Host	Human
Theoretical MW (kDa)	48.1
Quality Control Testing	<p>Transient overexpression cell lysate was tested with Anti-MAPK9 antibody (H00005601-D01) by Western Blots.</p> <p>SDS-PAGE Gel</p> <p>MAPK9 transfected lysate.</p> <p>Western Blot</p> <p>Lane 1: MAPK9 transfected lysate (48.10 KDa)</p> <p>Lane 2: Non-transfected lysate.</p>

Storage Buffer	1X Sample Buffer (50 mM Tris-HCl, 2% SDS, 10% glycerol, 300 mM 2-mercaptoethanol, 0.01% Bromophenol blue)
Storage Instruction	Store at -80°C. Aliquot to avoid repeated freezing and thawing.

Applications

- Western Blot

Gene Info — MAPK9

Entrez GeneID	5601
GeneBank Accession#	NM_002752.3
Protein Accession#	NP_002743.3
Gene Name	MAPK9
Gene Alias	JNK-55, JNK2, JNK2A, JNK2ALPHA, JNK2B, JNK2BETA, PRKM9, SAPK, p54a, p54aSAPK
Gene Description	mitogen-activated protein kinase 9
Omim ID	602896
Gene Ontology	Hyperlink

Gene Summary	<p>The protein encoded by this gene is a member of the MAP kinase family. MAP kinases act as an integration point for multiple biochemical signals, and are involved in a wide variety of cellular processes such as proliferation, differentiation, transcription regulation and development. This kinase targets specific transcription factors, and thus mediates immediate-early gene expression in response to various cell stimuli. It is most closely related to MAPK8, both of which are involved in UV radiation induced apoptosis, thought to be related to the cytochrome c-mediated cell death pathway. This gene and MAPK8 are also known as c-Jun N-terminal kinases. This kinase blocks the ubiquitination of tumor suppressor p53, and thus it increases the stability of p53 in nonstressed cells. Studies of this gene's mouse counterpart suggest a key role in T-cell differentiation. Several alternatively spliced transcript variants encoding distinct isoforms have been reported. [provided by RefSeq]</p>
---------------------	--------------------------------------------------------------------------------------------------------------------------------------------------------------------------------------------------------------------------------------------------------------------------------------------------------------------------------------------------------------------------------------------------------------------------------------------------------------------------------------------------------------------------------------------------------------------------------------------------------------------------------------------------------------------------------------------------------------------------------------------------------------------------------------------------------------------------------------------------------------------------------------------------------------------------------------------------------------------------------------------------------------------------------------

Other Designations	Jun kinase MAP kinase 9 c-Jun N-terminal kinase 2 c-Jun kinase 2 mitogen-activated protein kinase 9 isoform JNK2 alpha2 stress-activated protein kinase JNK2
---------------------------	--------------------------------------------------------------------------------------------------------------------------------------------------------------

Pathway

- [Adipocytokine signaling pathway](#)
- [Colorectal cancer](#)
- [Epithelial cell signaling in Helicobacter pylori infection](#)
- [ErbB signaling pathway](#)
- [Fc epsilon RI signaling pathway](#)
- [Focal adhesion](#)
- [GnRH signaling pathway](#)
- [Insulin signaling pathway](#)
- [MAPK signaling pathway](#)
- [Neurotrophin signaling pathway](#)
- [Pancreatic cancer](#)
- [Pathways in cancer](#)
- [T cell receptor signaling pathway](#)
- [Toll-like receptor signaling pathway](#)
- [Type II diabetes mellitus](#)
- [Wnt signaling pathway](#)

Disease

- [Breast cancer](#)
- [Breast Neoplasms](#)
- [Genetic Predisposition to Disease](#)
- [HIV Infections](#)
- [Tobacco Use Disorder](#)