

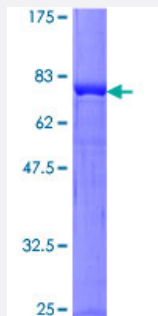
Full-Length

MAPK8 (Human) Recombinant Protein (P01)

Catalog # H00005599-P01

Size 25 ug, 10 ug

Applications



Specification

Product Description

Human MAPK8 full-length ORF (NP_620637.1, 1 a.a. - 427 a.a.) recombinant protein with GST-tag at N-terminal.

Sequence

MSRSKRDNNFYSEIGDSTFTVLKRYQNLKPIGSGAQGIVCAAYDAILERNVAIKKLSRPFQNQTHA
KRAYRELVLMKCVNHKNIIGLLNVFTPQKSLEEFQDVYVMELMDANLCQVIQMELDHERMSYLLY
QMLCGIKHLHSAGIIHRDLKPSNVVKSDCTLKILDFGLARTAGTSFMMTPYVTRYRAPEVILGMG
YKENVDLWSVGCIMGEMVCHKILFPGRDYIDQWNKVIEQLGTPCPEFMKKLQPTVRTYVENRPKY
AGYSFEKLFDPDLFPADSEHNKLKASQARDLLSKMLVIDASKRISVDEALQHPYINVWYDPSEAE
APPPKIPDKQLDEREHTIEEWKELIYKEMDLEERTKNGVIRGQPSPLGAAVINGSQHPSSSSSVN
DVSSMSTDPTLASD TDSSLEAAAGPLGCCR

Host

Wheat Germ (in vitro)

Theoretical MW (kDa)

74.7

Preparation Method

[in vitro wheat germ expression system](#)

Purification

Glutathione Sepharose 4 Fast Flow

Quality Control Testing

12.5% SDS-PAGE Stained with Coomassie Blue.

Storage Buffer

50 mM Tris-HCl, 10 mM reduced Glutathione, pH=8.0 in the elution buffer.

Storage Instruction

Store at -80°C. Aliquot to avoid repeated freezing and thawing.

Note

Best use within three months from the date of receipt of this protein.

Applications

- Enzyme-linked Immunoabsorbent Assay
- Western Blot (Recombinant protein)
- Antibody Production
- Protein Array

Gene Info — MAPK8

Entrez GeneID [5599](#)

GeneBank Accession# [NM_139049.1](#)

Protein Accession# [NP_620637.1](#)

Gene Name MAPK8

Gene Alias JNK, JNK1, JNK1A2, JNK21B1/2, PRKM8, SAPK1

Gene Description mitogen-activated protein kinase 8

Omim ID [601158](#)

Gene Ontology [Hyperlink](#)

Gene Summary

The protein encoded by this gene is a member of the MAP kinase family. MAP kinases act as an integration point for multiple biochemical signals, and are involved in a wide variety of cellular processes such as proliferation, differentiation, transcription regulation and development. This kinase is activated by various cell stimuli, and targets specific transcription factors, and thus mediates immediate-early gene expression in response to cell stimuli. The activation of this kinase by tumor necrosis factor alpha (TNF-alpha) is found to be required for TNF-alpha induced apoptosis. This kinase is also involved in UV radiation induced apoptosis, which is thought to be related to cytochrome c-mediated cell death pathway. Studies of the mouse counterpart of this gene suggested that this kinase play a key role in T cell proliferation, apoptosis and differentiation. Four alternatively spliced transcript variants encoding distinct isoforms have been reported. [provided by RefSeq]

Other Designations

JNK1 alpha protein kinase|JNK1 beta protein kinase|JUN N-terminal kinase|OTTHUMP00000019552|OTTHUMP00000019555|OTTHUMP00000019556|OTTHUMP00000019558|c-Jun N-terminal kinase 1|mitogen-activated protein kinase 8 isoform JNK1 alpha1|mitogen-activated protein

Publication Reference

- [JNK1 Protects against Glucolipotoxicity-Mediated Beta-Cell Apoptosis.](#)

Prause M, Christensen DP, Billestrup N, Mandrup-Poulsen T.

PLoS One 2014 Jan; 9(1):e87067.

Application: WB, Human, JNK antibodies

Pathway

- [Adipocytokine signaling pathway](#)
- [Colorectal cancer](#)
- [Epithelial cell signaling in Helicobacter pylori infection](#)
- [ErbB signaling pathway](#)
- [Fc epsilon RI signaling pathway](#)
- [Focal adhesion](#)
- [GnRH signaling pathway](#)
- [Insulin signaling pathway](#)
- [MAPK signaling pathway](#)
- [Neurotrophin signaling pathway](#)
- [Pancreatic cancer](#)
- [Pathways in cancer](#)
- [Toll-like receptor signaling pathway](#)
- [Type II diabetes mellitus](#)
- [Wnt signaling pathway](#)

Disease

- [Breast cancer](#)

- [Breast Neoplasms](#)
- [Cardiovascular Diseases](#)
- [Diabetes Mellitus](#)
- [Edema](#)
- [Genetic Predisposition to Disease](#)
- [HIV Infections](#)