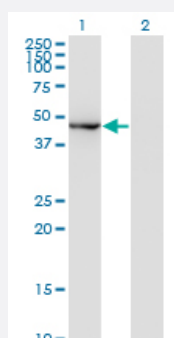


MAPK8 monoclonal antibody (M04), clone 2F3

Catalog # H00005599-M04

Size 100 ug

Applications

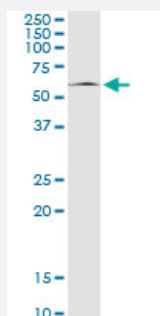


Western Blot (Transfected lysate)

Western Blot analysis of MAPK8 expression in transfected 293T cell line by MAPK8 monoclonal antibody (M04), clone 2F3.

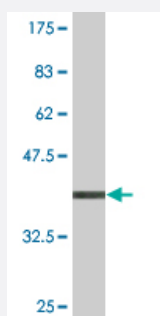
Lane 1: MAPK8 transfected lysate (48.3 KDa).

Lane 2: Non-transfected lysate.



Immunoprecipitation

Immunoprecipitation of MAPK8 transfected lysate using anti-MAPK8 monoclonal antibody and Protein A Magnetic Bead, and immunoblotted with MAPK8 MaxPab rabbit polyclonal antibody.



Western Blot detection against Immunogen (38.21 KDa) .

Specification

Product Description

Mouse monoclonal antibody raised against a partial recombinant MAPK8.

| | |
|--------------------------------|--|
| Immunogen | MAPK8 (NP_620637, 318 a.a. ~ 427 a.a) partial recombinant protein with GST tag. MW of the GST tag alone is 26 KDa. |
| Sequence | HPYINVWYDPSEAEAPPPKIPDKQLDEREHTIEEWKELIYKEVMDLEERTKNGVIRGQPSPLGAAVINGSQHPSSSSSVNDVSSMSTDPTLASD TDSSLEAAAGPLGCCR |
| Host | Mouse |
| Reactivity | Human |
| Isotype | IgG2a Kappa |
| Quality Control Testing | Antibody Reactive Against Recombinant Protein. Western Blot detection against Immunogen (38.21 KDa) . |
| Storage Buffer | In 1x PBS, pH 7.4 |
| Storage Instruction | Store at -20°C or lower. Aliquot to avoid repeated freezing and thawing. |

Applications

- Western Blot (Transfected lysate)

Western Blot analysis of MAPK8 expression in transfected 293T cell line by MAPK8 monoclonal antibody (M04), clone 2F3.

Lane 1: MAPK8 transfected lysate(48.3 KDa).

Lane 2: Non-transfected lysate.

[Protocol Download](#)

- Western Blot (Recombinant protein)

[Protocol Download](#)

- Immunoprecipitation

Immunoprecipitation of MAPK8 transfected lysate using anti-MAPK8 monoclonal antibody and Protein A Magnetic Bead, and immunoblotted with MAPK8 MaxPab rabbit polyclonal antibody.

[Protocol Download](#)

- ELISA

Gene Info — MAPK8

Entrez GeneID [5599](#)

| | |
|---------------------|---|
| GeneBank Accession# | NM_139049 |
| Protein Accession# | NP_620637 |
| Gene Name | MAPK8 |
| Gene Alias | JNK, JNK1, JNK1A2, JNK21B1/2, PRKM8, SAPK1 |
| Gene Description | mitogen-activated protein kinase 8 |
| Omim ID | 601158 |
| Gene Ontology | Hyperlink |
| Gene Summary | <p>The protein encoded by this gene is a member of the MAP kinase family. MAP kinases act as an integration point for multiple biochemical signals, and are involved in a wide variety of cellular processes such as proliferation, differentiation, transcription regulation and development. This kinase is activated by various cell stimuli, and targets specific transcription factors, and thus mediates immediate-early gene expression in response to cell stimuli. The activation of this kinase by tumor-necrosis factor alpha (TNF-alpha) is found to be required for TNF-alpha induced apoptosis. This kinase is also involved in UV radiation induced apoptosis, which is thought to be related to cytochrome c-mediated cell death pathway. Studies of the mouse counterpart of this gene suggested that this kinase play a key role in T cell proliferation, apoptosis and differentiation. Four alternatively spliced transcript variants encoding distinct isoforms have been reported. [provided by RefSeq]</p> |
| Other Designations | JNK1 alpha protein kinase JNK1 beta protein kinase JUN N-terminal kinase OTTHUMP00000019552 OTTHUMP00000019555 OTTHUMP00000019556 OTTHUMP00000019558 c-Jun N-terminal kinase 1 mitogen-activated protein kinase 8 isoform JNK1 alpha1 mitogen-activated protein |

Pathway

- [Adipocytokine signaling pathway](#)
- [Colorectal cancer](#)
- [Epithelial cell signaling in Helicobacter pylori infection](#)
- [ErbB signaling pathway](#)
- [Fc epsilon RI signaling pathway](#)
- [Focal adhesion](#)
- [GnRH signaling pathway](#)
- [Insulin signaling pathway](#)
- [MAPK signaling pathway](#)

- [Neurotrophin signaling pathway](#)
- [Pancreatic cancer](#)
- [Pathways in cancer](#)
- [Toll-like receptor signaling pathway](#)
- [Type II diabetes mellitus](#)
- [Wnt signaling pathway](#)

Disease

- [Breast cancer](#)
- [Breast Neoplasms](#)
- [Cardiovascular Diseases](#)
- [Diabetes Mellitus](#)
- [Edema](#)
- [Genetic Predisposition to Disease](#)
- [HIV Infections](#)