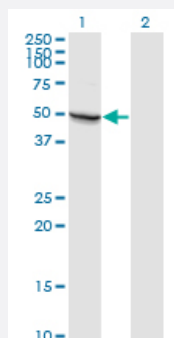


MAPK8 monoclonal antibody (M01), clone 3H2

Catalog # H00005599-M01

Size 100 ug

Applications

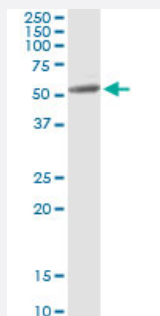


Western Blot (Transfected lysate)

Western Blot analysis of MAPK8 expression in transfected 293T cell line by MAPK8 monoclonal antibody (M01), clone 3H2.

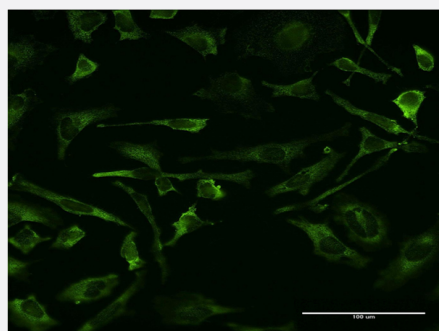
Lane 1: MAPK8 transfected lysate (48.3 kDa).

Lane 2: Non-transfected lysate.



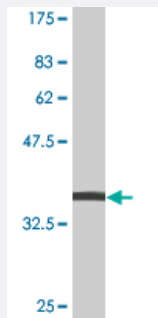
Immunoprecipitation

Immunoprecipitation of MAPK8 transfected lysate using anti-MAPK8 monoclonal antibody and Protein A Magnetic Bead, and immunoblotted with MAPK8 MaxPab rabbit polyclonal antibody.



Immunofluorescence

Immunofluorescence of monoclonal antibody to MAPK8 on HeLa cells. [antibody concentration 10 ug/ml]



Western Blot detection against Immunogen (38.21 KDa) .

Specification

Product Description	Mouse monoclonal antibody raised against a partial recombinant MAPK8.
Immunogen	MAPK8 (NP_620637, 318 a.a. ~ 427 a.a) partial recombinant protein with GST tag. MW of the GST tag alone is 26 KDa.
Sequence	HPYINVWYDPSEAEAPPPKIPDKQLDEREHTIEEWKELYKEVMDLEERTKNGVIRGQPSPLGAAVINGSQHPSSSSSVNDVSSMSTDPTLASDTDSSLEAAAGPLGCCR
Host	Mouse
Reactivity	Human
Isotype	IgG2a Kappa
Quality Control Testing	Antibody Reactive Against Recombinant Protein. Western Blot detection against Immunogen (38.21 KDa) .
Storage Buffer	In 1x PBS, pH 7.4
Storage Instruction	Store at -20°C or lower. Aliquot to avoid repeated freezing and thawing.

Applications

- Western Blot (Transfected lysate)

Western Blot analysis of MAPK8 expression in transfected 293T cell line by MAPK8 monoclonal antibody (M01), clone 3H2.

Lane 1: MAPK8 transfected lysate(48.3 KDa).

Lane 2: Non-transfected lysate.

[Protocol Download](#)

- Western Blot (Recombinant protein)

[Protocol Download](#)

- Immunoprecipitation

Immunoprecipitation of MAPK8 transfected lysate using anti-MAPK8 monoclonal antibody and Protein A Magnetic Bead, and immunoblotted with MAPK8 MaxPab rabbit polyclonal antibody.

[Protocol Download](#)

- ELISA

- Immunofluorescence

Immunofluorescence of monoclonal antibody to MAPK8 on HeLa cell . [antibody concentration 10 ug/ml]

Gene Info — MAPK8

Entrez GeneID [5599](#)

GeneBank Accession# [NM_139049](#)

Protein Accession# [NP_620637](#)

Gene Name MAPK8

Gene Alias JNK, JNK1, JNK1A2, JNK21B1/2, PRKM8, SAPK1

Gene Description mitogen-activated protein kinase 8

Omim ID [601158](#)

Gene Ontology [Hyperlink](#)

Gene Summary

The protein encoded by this gene is a member of the MAP kinase family. MAP kinases act as an integration point for multiple biochemical signals, and are involved in a wide variety of cellular processes such as proliferation, differentiation, transcription regulation and development. This kinase is activated by various cell stimuli, and targets specific transcription factors, and thus mediates immediate-early gene expression in response to cell stimuli. The activation of this kinase by tumor necrosis factor alpha (TNF-alpha) is found to be required for TNF-alpha induced apoptosis. This kinase is also involved in UV radiation induced apoptosis, which is thought to be related to cytochrome c-mediated cell death pathway. Studies of the mouse counterpart of this gene suggested that this kinase play a key role in T cell proliferation, apoptosis and differentiation. Four alternatively spliced transcript variants encoding distinct isoforms have been reported. [provided by RefSeq]

Other Designations

JNK1 alpha protein kinase|JNK1 beta protein kinase|JUN N-terminal kinase|OTTHUMP00000019552|OTTHUMP00000019555|OTTHUMP00000019556|OTTHUMP00000019558|c-Jun N-terminal kinase 1|mitogen-activated protein kinase 8 isoform JNK1 alpha1|mitogen-activated protein

Pathway

- [Adipocytokine signaling pathway](#)
- [Colorectal cancer](#)
- [Epithelial cell signaling in Helicobacter pylori infection](#)
- [ErbB signaling pathway](#)
- [Fc epsilon RI signaling pathway](#)
- [Focal adhesion](#)
- [GnRH signaling pathway](#)
- [Insulin signaling pathway](#)
- [MAPK signaling pathway](#)
- [Neurotrophin signaling pathway](#)
- [Pancreatic cancer](#)
- [Pathways in cancer](#)
- [Toll-like receptor signaling pathway](#)
- [Type II diabetes mellitus](#)
- [Wnt signaling pathway](#)

Disease

- [Breast cancer](#)
- [Breast Neoplasms](#)
- [Cardiovascular Diseases](#)
- [Diabetes Mellitus](#)
- [Edema](#)
- [Genetic Predisposition to Disease](#)
- [HIV Infections](#)