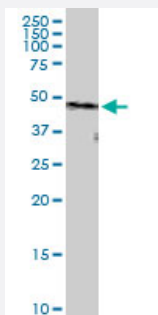


PPP2R1B (Human) IP-WB Antibody Pair

Catalog # H00005519-PW1

Size 1 Set

Applications



Immunoprecipitation of PPP2R1B transfected lysate using rabbit polyclonal anti-PPP2R1B and Protein A Magnetic Bead ([U0007](#)), and immunoblotted with mouse purified polyclonal anti-PPP2R1B.

Specification

Product Description	This IP-WB antibody pair set comes with one antibody for immunoprecipitation and another to detect the precipitated protein in western blot.
Reactivity	Human
Interspecies Antigen Sequence	Mouse (95%); Rat (95%)
Quality Control Testing	Immunoprecipitation-Western Blot (IP-WB) Immunoprecipitation of PPP2R1B transfected lysate using rabbit polyclonal anti-PPP2R1B and Protein A Magnetic Bead (U0007), and immunoblotted with mouse purified polyclonal anti-PPP2R1B.
Supplied Product	Antibody pair set content: 1. Antibody pair for IP: rabbit polyclonal anti-PPP2R1B (300 ul) 2. Antibody pair for WB: mouse purified polyclonal anti-PPP2R1B (50 ug)
Storage Instruction	Store reagents of the antibody pair set at -20°C or lower. Please aliquot to avoid repeated freeze thaw cycle. Reagents should be returned to -20°C storage immediately after use.

Applications

- Immunoprecipitation-Western Blot

[Protocol Download](#)

Gene Info — PPP2R1B

Entrez GeneID [5519](#)

Gene Name PPP2R1B

Gene Alias MGC26454, PR65B

Gene Description protein phosphatase 2 (formerly 2A), regulatory subunit A, beta isoform

Omim ID [211980 603113](#)

Gene Ontology [Hyperlink](#)

Gene Summary

This gene encodes a constant regulatory subunit of protein phosphatase 2. Protein phosphatase 2 is one of the four major Ser/Thr phosphatases, and it is implicated in the negative control of cell growth and division. It consists of a common heteromeric core enzyme, which is composed of a catalytic subunit and a constant regulatory subunit, that associates with a variety of regulatory subunits. The constant regulatory subunit A serves as a scaffolding molecule to coordinate the assembly of the catalytic subunit and a variable regulatory B subunit. This gene encodes a beta isoform of the constant regulatory subunit A. Defects in this gene could be the cause of some lung and colon cancers. At least two transcript variants encoding different isoforms have been found for this gene . [provided by RefSeq]

Other Designations

PP2A, subunit A, PR65-beta isoform|PP2A, subunit A, R1-beta isoform|PP2A-A-beta|beta isoform of regulatory subunit A, protein phosphatase 2|protein phosphatase 2 (formerly 2A), regulatory subunit A (PR 65), beta isoform|protein phosphatase 2, structural/r

Pathway

- [Long-term depression](#)
- [TGF-beta signaling pathway](#)
- [Tight junction](#)
- [Wnt signaling pathway](#)

Disease

- [Breast cancer](#)
- [Breast Neoplasms](#)
- [Genetic Predisposition to Disease](#)
- [Lung Neoplasms](#)
- [Tobacco Use Disorder](#)
- [Uterine Cervical Neoplasms](#)