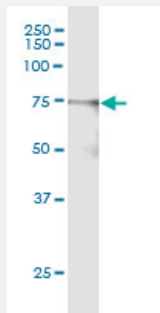


PPEF1 (Human) IP-WB Antibody Pair

Catalog # H00005475-PW2

Size 1 Set

Applications



Immunoprecipitation of PPEF1 transfected lysate using rabbit polyclonal anti-PPEF1 and Protein A Magnetic Bead ([U0007](#)), and immunoblotted with mouse purified polyclonal anti-PPEF1.

Specification

Product Description	This IP-WB antibody pair set comes with one antibody for immunoprecipitation and another to detect the precipitated protein in western blot.
Reactivity	Human
Quality Control Testing	Immunoprecipitation-Western Blot (IP-WB) Immunoprecipitation of PPEF1 transfected lysate using rabbit polyclonal anti-PPEF1 and Protein A Magnetic Bead (U0007), and immunoblotted with mouse purified polyclonal anti-PPEF1.
Supplied Product	Antibody pair set content: 1. Antibody pair for IP: rabbit polyclonal anti-PPEF1 (300 ul) 2. Antibody pair for WB: mouse purified polyclonal anti-PPEF1 (50 ug)
Storage Instruction	Store reagents of the antibody pair set at -20°C or lower. Please aliquot to avoid repeated freeze thaw cycle. Reagents should be returned to -20°C storage immediately after use.

Applications

- Immunoprecipitation-Western Blot

[Protocol Download](#)

Gene Info — PPEF1

Entrez GeneID [5475](#)**Gene Name** PPEF1**Gene Alias** PP7, PPEF, PPP7C**Gene Description** protein phosphatase, EF-hand calcium binding domain 1**Omim ID** [300109](#)**Gene Ontology** [Hyperlink](#)

Gene Summary This gene encodes a member of the serine/threonine protein phosphatase with EF-hand motif family. The protein contains a protein phosphatase catalytic domain, and at least two EF-hand calcium-binding motifs in its C terminus. Although its substrate(s) is unknown, the encoded protein has been suggested to play a role in specific sensory neuron function and/or development. This gene shares high sequence similarity with the Drosophila retinal degeneration C (rdgC) gene. Several alternatively spliced transcript variants, each encoding a distinct isoform, have been described. [provided by RefSeq]

Other Designations OTTHUMP00000023006|protein phosphatase with EF hand calcium-binding domain 1|protein phosphatase, EF hand calcium-binding domain 1|protein phosphatase, serine/threonine type, with EF-hands|serine/threonine protein phosphatase 7