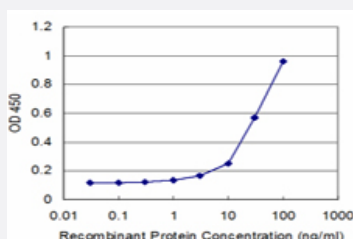


PLIN monoclonal antibody (M09), clone 4G1

Catalog # H00005346-M09

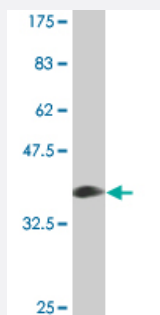
Size 100 ug

Applications



Sandwich ELISA (Recombinant protein)

Detection limit for recombinant GST tagged PLIN is approximately 3ng/ml as a capture antibody.



Western Blot detection against Immunogen (37.62 KDa) .

Specification

Product Description

Mouse monoclonal antibody raised against a partial recombinant PLIN.

Immunogen

PLIN (NP_002657.2, 101 a.a. ~ 208 a.a) partial recombinant protein with GST tag. MW of the GST tag alone is 26 KDa.

Sequence

KIPALQYPPEKIASSELKDTISTRRLRSARNSSIVPIASTSDKVLGAALAGCELAWGVARDTAEFAANT
RAGRLASGGADLALGSIEKVVEYLLPADKEESAPAPGHQQA

Host

Mouse

Reactivity

Human

Interspecies Antigen Sequence	Mouse (86)
Isotype	IgG2a Kappa
Quality Control Testing	Antibody Reactive Against Recombinant Protein. Western Blot detection against Immunogen (37.62 KDa) .
Storage Buffer	In 1x PBS, pH 7.4
Storage Instruction	Store at -20°C or lower. Aliquot to avoid repeated freezing and thawing.

Applications

- Western Blot (Recombinant protein)

[Protocol Download](#)

- Sandwich ELISA (Recombinant protein)

Detection limit for recombinant GST tagged PLIN is approximately 3ng/ml as a capture antibody.

[Protocol Download](#)

- ELISA

Gene Info — PLIN

Entrez GeneID	5346
GeneBank Accession#	NM_002666
Protein Accession#	NP_002657.2
Gene Name	PLIN
Gene Alias	PERI
Gene Description	perilipin
Omim ID	170290
Gene Ontology	Hyperlink

Gene Summary

The protein encoded by this gene coats lipid storage droplets in adipocytes, thereby protecting them until they can be broken down by hormone-sensitive lipase. The encoded protein is the major cAMP-dependent protein kinase substrate in adipocytes and, when unphosphorylated, may play a role in the inhibition of lipolysis. Alternatively spliced transcript variants varying in the 5' UTR, but encoding the same protein, have been found for this gene. [provided by RefSeq]

Other Designations

lipid droplet-associated protein

Pathway

- [PPAR signaling pathway](#)

Disease

- [Anorexia Nervosa](#)
- [Atherosclerosis](#)
- [Body Weight](#)
- [Brain Ischemia](#)
- [Bulimia](#)
- [Cardiovascular Diseases](#)
- [Cerebral Hemorrhage](#)
- [Diabetes Mellitus](#)
- [Genetic Predisposition to Disease](#)
- [Hypercholesterolemia](#)
- [Hypertension](#)
- [Insulin Resistance](#)
- [Metabolic Syndrome X](#)
- [Obesity](#)
- [Osteoporosis](#)
- [Ovarian Failure](#)

- [Polycystic Ovary Syndrome](#)
- [Puberty](#)

- [Stroke](#)

- [Thrombophilia](#)

- [Tobacco Use Disorder](#)

- [Weight Gain](#)

- [Weight Loss](#)