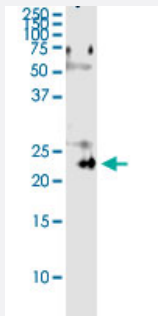


PDGFA (Human) IP-WB Antibody Pair

Catalog # H00005154-PW2

Size 1 Set

Applications



Immunoprecipitation of PDGFA transfected lysate using rabbit polyclonal anti-PDGFA and Protein A Magnetic Bead ([U0007](#)), and immunoblotted with mouse purified polyclonal anti-PDGFA.

Specification

Product Description	This IP-WB antibody pair set comes with one antibody for immunoprecipitation and another to detect the precipitated protein in western blot.
Reactivity	Human
Quality Control Testing	Immunoprecipitation-Western Blot (IP-WB) Immunoprecipitation of PDGFA transfected lysate using rabbit polyclonal anti-PDGFA and Protein A Magnetic Bead (U0007), and immunoblotted with mouse purified polyclonal anti-PDGFA.
Supplied Product	Antibody pair set content: 1. Antibody pair for IP: rabbit polyclonal anti-PDGFA (300 ul) 2. Antibody pair for WB: mouse purified polyclonal anti-PDGFA (50 ug)
Storage Instruction	Store reagents of the antibody pair set at -20°C or lower. Please aliquot to avoid repeated freeze thaw cycle. Reagents should be returned to -20°C storage immediately after use.

Applications

- Immunoprecipitation-Western Blot

[Protocol Download](#)

Gene Info — PDGFA

Entrez GeneID	5154
Gene Name	PDGFA
Gene Alias	PDGF-A, PDGF1
Gene Description	platelet-derived growth factor alpha polypeptide
Omim ID	173430
Gene Ontology	Hyperlink
Gene Summary	The protein encoded by this gene is a member of the platelet-derived growth factor family. The four members of this family are mitogenic factors for cells of mesenchymal origin and are characterized by a motif of eight cysteines. This gene product can exist either as a homodimer or as a heterodimer with the platelet-derived growth factor beta polypeptide, where the dimers are connected by disulfide bonds. Studies using knockout mice have shown cellular defects in oligodendrocytes, alveolar smooth muscle cells, and Leydig cells in the testis; knockout mice die either as embryos or shortly after birth. Two splice variants have been identified for this gene. [provided by RefSeq]
Other Designations	PDGF A-chain platelet-derived growth factor alpha platelet-derived growth factor alpha chain platelet-derived growth factor alpha isoform 2 preproprotein

Pathway

- [Cytokine-cytokine receptor interaction](#)
- [Focal adhesion](#)
- [Gap junction](#)
- [Glioma](#)
- [MAPK signaling pathway](#)
- [Melanoma](#)
- [Pathways in cancer](#)
- [Prostate cancer](#)
- [Regulation of actin cytoskeleton](#)

Disease

- [Asthma](#)
- [Coronary Artery Disease](#)
- [Genetic Predisposition to Disease](#)