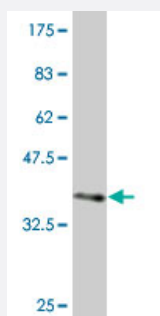


PCDH1 monoclonal antibody (M04), clone 2E6

Catalog # H00005097-M04

Size 100 ug

Applications



Western Blot detection against Immunogen (37.62 KDa) .

Specification

Product Description	Mouse monoclonal antibody raised against a partial recombinant PCDH1.
Immunogen	PCDH1 (NP_002578, 62 a.a. ~ 169 a.a) partial recombinant protein with GST tag. MW of the GST tag alone is 26 KDa.
Sequence	YKVPEEQPPNTLIGSLAADYGFPDVGHLKLEVGAPYLRVDGKTGDIFTTETSIDREGLRECQNQL PGDPCILEFEVSITDLVQNGSPRLLEGQIEVQDINDNTPNFA
Host	Mouse
Reactivity	Human
Isotype	IgG2a Kappa
Quality Control Testing	Antibody Reactive Against Recombinant Protein. Western Blot detection against Immunogen (37.62 KDa) .
Storage Buffer	In 1x PBS, pH 7.4
Storage Instruction	Store at -20°C or lower. Aliquot to avoid repeated freezing and thawing.

Applications

- Western Blot (Recombinant protein)

[Protocol Download](#)

- ELISA

Gene Info — PCDH1

Entrez GeneID [5097](#)

GeneBank Accession# [NM_002587](#)

Protein Accession# [NP_002578](#)

Gene Name PCDH1

Gene Alias FLJ53887, MGC45991, PC42, PCDH42

Gene Description protocadherin 1

Omim ID [603626](#)

Gene Ontology [Hyperlink](#)

Gene Summary This gene belongs to the protocadherin subfamily within the cadherin superfamily. The encoded protein is a membrane protein found at cell-cell boundaries. It is involved in neural cell adhesion, suggesting a possible role in neuronal development. The protein includes an extracellular region, containing 7 cadherin-like domains, a transmembrane region and a C-terminal cytoplasmic region. Cells expressing the protein showed cell aggregation activity. Alternative splicing occurs in this gene. [provided by RefSeq]

Other Designations OTTHUMP00000160067|cadherin-like 1|cadherin-like protein 1|protocadherin 42