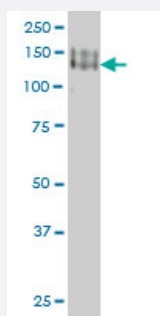


PCDH1 monoclonal antibody (M01), clone 5D5

Catalog # H00005097-M01

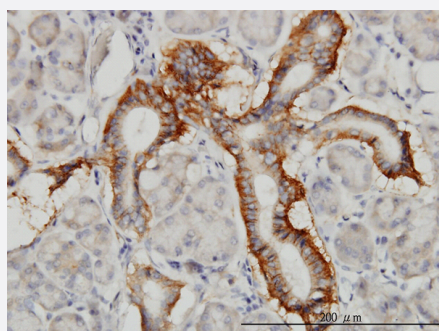
Size 100 ug

Applications



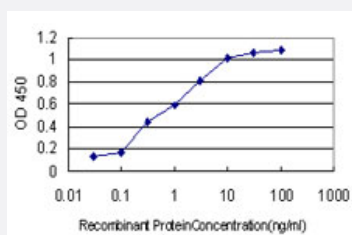
Western Blot (Cell lysate)

PCDH1 monoclonal antibody (M01), clone 5D5 Western Blot analysis of PCDH1 expression in A-431 (Cat # L015V1).



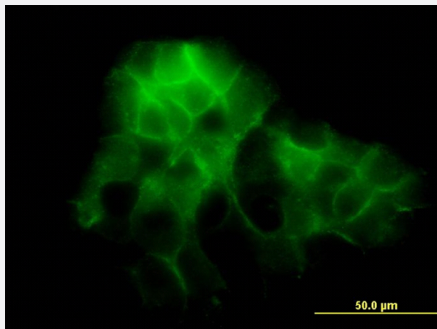
Immunohistochemistry (Formalin/PFA-fixed paraffin-embedded sections)

Immunoperoxidase of monoclonal antibody to PCDH1 on formalin-fixed paraffin-embedded human salivary gland. [antibody concentration 3 ug/ml]



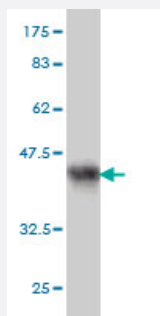
Sandwich ELISA (Recombinant protein)

Detection limit for recombinant GST tagged PCDH1 is approximately 0.03ng/ml as a capture antibody.



Immunofluorescence

Immunofluorescence of monoclonal antibody to PCDH1 on A-431 cell.
[antibody concentration 10 ug/ml]



Western Blot detection against Immunogen (37.62 KDa) .

Specification

Product Description	Mouse monoclonal antibody raised against a partial recombinant PCDH1.
Immunogen	PCDH1 (NP_002578, 62 a.a. ~ 169 a.a) partial recombinant protein with GST tag. MW of the GST tag alone is 26 KDa.
Sequence	YKVPEEQPPNTLIGSLAADYGFPDVGHLYKLEVGAPYL RVDGKTGDIFTTETSIDREGLRECQNQL PGDPCILEFEVSITDLVQNGSPRLLEGQIEVQDINDNTPNFA
Host	Mouse
Reactivity	Human
Isotype	IgG1 Kappa
Quality Control Testing	Antibody Reactive Against Recombinant Protein. Western Blot detection against Immunogen (37.62 KDa) .
Storage Buffer	In 1x PBS, pH 7.4
Storage Instruction	Store at -20°C or lower. Aliquot to avoid repeated freezing and thawing.

Applications

- Western Blot (Cell lysate)

PCDH1 monoclonal antibody (M01), clone 5D5 Western Blot analysis of PCDH1 expression in A-431 (Cat # L015V1).

[Protocol Download](#)

- Western Blot (Recombinant protein)

[Protocol Download](#)

- Immunohistochemistry (Formalin/PFA-fixed paraffin-embedded sections)

Immunoperoxidase of monoclonal antibody to PCDH1 on formalin-fixed paraffin-embedded human salivary gland. [antibody concentration 3 ug/ml]

[Protocol Download](#)

- Sandwich ELISA (Recombinant protein)

Detection limit for recombinant GST tagged PCDH1 is approximately 0.03ng/ml as a capture antibody.

[Protocol Download](#)

- ELISA

- Immunofluorescence

Immunofluorescence of monoclonal antibody to PCDH1 on A-431 cell. [antibody concentration 10 ug/ml]

Gene Info — PCDH1

Entrez GeneID	5097
---------------	----------------------

GeneBank Accession#	NM_002587
---------------------	---------------------------

Protein Accession#	NP_002578
--------------------	---------------------------

Gene Name	PCDH1
-----------	-------

Gene Alias	FLJ53887, MGC45991, PC42, PCDH42
------------	----------------------------------

Gene Description	protocadherin 1
------------------	-----------------

Omim ID	603626
---------	------------------------

Gene Ontology	Hyperlink
---------------	---------------------------

Gene Summary

This gene belongs to the protocadherin subfamily within the cadherin superfamily. The encoded protein is a membrane protein found at cell-cell boundaries. It is involved in neural cell adhesion, suggesting a possible role in neuronal development. The protein includes an extracellular region, containing 7 cadherin-like domains, a transmembrane region and a C-terminal cytoplasmic region. Cells expressing the protein showed cell aggregation activity. Alternative splicing occurs in this gene. [provided by RefSeq]

Other Designations

OTTHUMP00000160067|cadherin-like 1|cadherin-like protein 1|protocadherin 42

Publication Reference

- [Protocadherin-1 is expressed in the notochord of mouse embryo but is dispensable for its formation.](#)

Kanako Fukunaga, Masafumi Tanji, Nana Hanzawa, Hiroki Kuroda, Masafumi Inui.

Biochemistry and Biophysics Reports 2021 Jun; 27:101047.

Application: IF, IHC-Fr, WB-Ti, WB-Tr, Mouse, Mouse embryos, Mouse liver

- [Protocadherin-1 Localization and Cell-Adhesion Function in Airway Epithelial Cells in Asthma.](#)

Faura Tellez G, Willemse BW, Brouwer U, Nijboer-Brinksma S, Vandepoele K, Noordhoek JA, Heijink I, de Vries M, Smithers NP, Postma DS, Timens W, Wiffen L, van Roy F, Holloway JW, Lackie PM, Nawijn MC, Koppelman GH.

PLoS One 2016 Oct; 11(10):e0163967.

Application: IF, IHC, Human, Human bronchial epithelial cells 16HBE, asthmatic patients

- [Identification of PCDH1 as a Novel Susceptibility Gene for Bronchial Hyperresponsiveness.](#)

Koppelman GH, Meyers DA, Howard TD, Zheng SL, Hawkins GA, Ampleford EJ, Xu J, Koning H, Bruinenberg M, Nolte IM, van Diemen CC, Boezen HM, Timens W, Whittaker PA, Stine OC, Barton SJ, Holloway JW, Holgate ST, Graves PE, Martinez FD, van Oosterhout A, Blee.

American Journal of Respiratory and Critical Care Medicine 2009 Nov; 180(10):929.

Application: IHC, WB-Ce, Human, Airway wall biopsy, Brain, Airway epithelial cell lines, Lungs, Primary epithelial cells