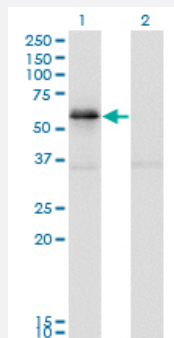


PAK1 monoclonal antibody (M02), clone 4D1

Catalog # H00005058-M02

Size 100 ug

Applications

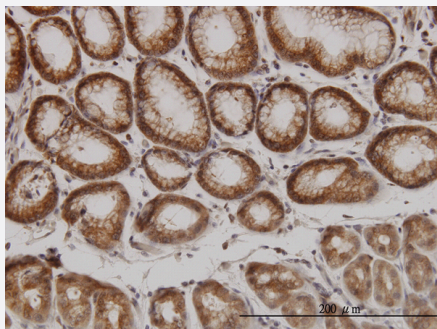


Western Blot (Transfected lysate)

Western Blot analysis of PAK1 expression in transfected 293T cell line by PAK1 monoclonal antibody (M02), clone 4D1.

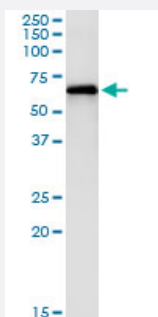
Lane 1: PAK1 transfected lysate (Predicted MW: 49.6 KDa).

Lane 2: Non-transfected lysate.



Immunohistochemistry (Formalin/PFA-fixed paraffin-embedded sections)

Immunoperoxidase of monoclonal antibody to PAK1 on formalin-fixed paraffin-embedded human stomach. [antibody concentration 3 ug/ml]

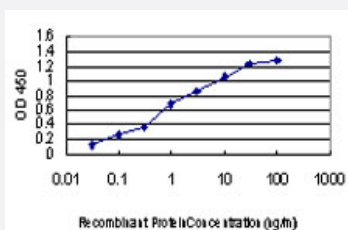


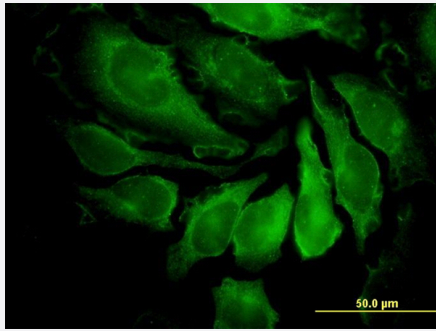
Immunoprecipitation

Immunoprecipitation of PAK1 transfected lysate using anti-PAK1 monoclonal antibody and Protein A Magnetic Bead, and immunoblotted with PAK1 monoclonal antibody.

Sandwich ELISA (Recombinant protein)

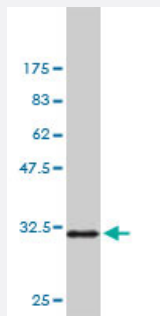
Detection limit for recombinant GST tagged PAK1 is approximately 0.1ng/ml as a capture antibody.





Immunofluorescence

Immunofluorescence of monoclonal antibody to PAK1 on HeLa cell. [antibody concentration 35 ug/ml]



Western Blot detection against Immunogen (35.53 KDa) .

Specification

Product Description	Mouse monoclonal antibody raised against a partial recombinant PAK1.
Immunogen	PAK1 (NP_002567, 191 a.a. ~ 280 a.a) partial recombinant protein with GST tag. MW of the GST tag alone is 26 KDa.
Sequence	APRPEHTKSVYTRSVEIPLVTPTRDVATSPISPTENNTTPPDALTRNTEKQKKKPKMSDEEILEKLRSIVSVGDPKKKYTRFEKIGQGA
Host	Mouse
Reactivity	Human
Isotype	IgG1 kappa
Quality Control Testing	Antibody Reactive Against Recombinant Protein. Western Blot detection against Immunogen (35.53 KDa) .
Storage Buffer	In 1x PBS, pH 7.4
Storage Instruction	Store at -20°C or lower. Aliquot to avoid repeated freezing and thawing.

Applications

- Western Blot (Transfected lysate)

Western Blot analysis of PAK1 expression in transfected 293T cell line by PAK1 monoclonal antibody (M02), clone 4D1.

Lane 1: PAK1 transfected lysate (Predicted MW: 49.6 KDa).

Lane 2: Non-transfected lysate.

[Protocol Download](#)

- Western Blot (Recombinant protein)

[Protocol Download](#)

- Immunohistochemistry (Formalin/PFA-fixed paraffin-embedded sections)

Immunoperoxidase of monoclonal antibody to PAK1 on formalin-fixed paraffin-embedded human stomach. [antibody concentration 3 ug/ml]

[Protocol Download](#)

- Immunoprecipitation

Immunoprecipitation of PAK1 transfected lysate using anti-PAK1 monoclonal antibody and Protein A Magnetic Bead, and immunoblotted with PAK1 monoclonal antibody.

[Protocol Download](#)

- Sandwich ELISA (Recombinant protein)

Detection limit for recombinant GST tagged PAK1 is approximately 0.1ng/ml as a capture antibody.

[Protocol Download](#)

- ELISA

- Immunofluorescence

Immunofluorescence of monoclonal antibody to PAK1 on HeLa cell. [antibody concentration 35 ug/ml]

Gene Info — PAK1

Entrez GeneID	5058
---------------	----------------------

GeneBank Accession#	NM_002576
---------------------	---------------------------

Protein Accession#	NP_002567
--------------------	---------------------------

Gene Name	PAK1
-----------	------

Gene Alias	MGC130000, MGC130001, PAKalpha
------------	--------------------------------

Gene Description	p21 protein (Cdc42/Rac)-activated kinase 1
Omim ID	602590
Gene Ontology	Hyperlink
Gene Summary	PAK proteins are critical effectors that link RhoGTPases to cytoskeleton reorganization and nuclear signaling. PAK proteins, a family of serine/threonine p21-activating kinases, include PAK1, PAK2, PAK3 and PAK4. These proteins serve as targets for the small GTP binding proteins Cdc42 and Rac and have been implicated in a wide range of biological activities. PAK1 regulates cell motility and morphology. Alternatively spliced transcript variants encoding different isoforms have been found for this gene. [provided by RefSeq]
Other Designations	STE20 homolog, yeast p21-activated kinase 1 p21/Cdc42/Rac1-activated kinase 1 (STE20 homolog, yeast) p21/Cdc42/Rac1-activated kinase 1 (yeast Ste20-related)

Publication Reference

- [Fragile X Related Protein 1 Clusters with Ribosomes and Messenger RNAs at a Subset of Dendritic Spines in the Mouse Hippocampus.](#)

Cook D, Del Rayo Sanchez-Carbente M, Lachance C, Radzioch D, Tremblay S, Khandjian EW, Desgroseillers L, Murai KK.
PLoS One 2011 Oct; 6(10):e26120.

Application: IF, Mouse, Hippocampus, Neurons

Pathway

- [Axon guidance](#)
- [Chemokine signaling pathway](#)
- [Epithelial cell signaling in Helicobacter pylori infection](#)
- [ErbB signaling pathway](#)
- [Fc gamma R-mediated phagocytosis](#)
- [Focal adhesion](#)
- [MAPK signaling pathway](#)
- [Natural killer cell mediated cytotoxicity](#)
- [Regulation of actin cytoskeleton](#)
- [Renal cell carcinoma](#)

- [T cell receptor signaling pathway](#)

Disease

- [Carcinoma](#)
- [Esophageal Neoplasms](#)
- [HIV Infections](#)
- [Tobacco Use Disorder](#)