

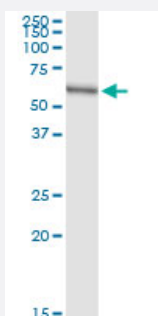
MaxPab®

## P4HB purified MaxPab rabbit polyclonal antibody (D01P)

Catalog # H00005034-D01P

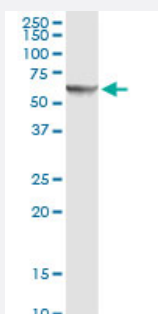
Size 100 ug

### Applications



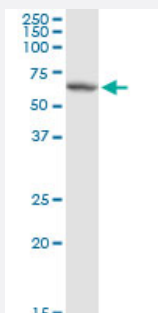
#### Western Blot (Tissue lysate)

P4HB MaxPab rabbit polyclonal antibody. Western Blot analysis of P4HB expression in mouse kidney.



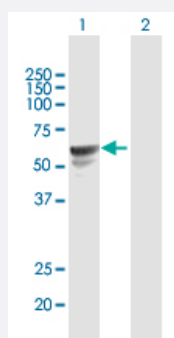
#### Western Blot (Tissue lysate)

P4HB MaxPab rabbit polyclonal antibody. Western Blot analysis of P4HB expression in human liver.



#### Western Blot (Cell lysate)

P4HB MaxPab rabbit polyclonal antibody. Western Blot analysis of P4HB expression in Jurkat.

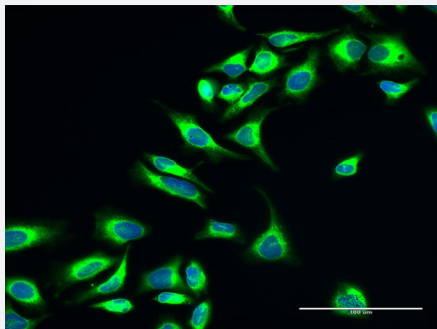


#### Western Blot (Transfected lysate)

Western Blot analysis of P4HB expression in transfected 293T cell line ([H00005034-T02](#)) by P4HB MaxPab polyclonal antibody.

Lane 1: P4HB transfected lysate(57.10 KDa).

Lane 2: Non-transfected lysate.



## Immunofluorescence

Immunofluorescence of purified MaxPab antibody to P4HB on HeLa cell.  
[antibody concentration 5 ug/ml]

## Specification

<b>Product Description</b>	Rabbit polyclonal antibody raised against a full-length human P4HB protein.
<b>Immunogen</b>	P4HB (NP_000909.2, 1 a.a. ~ 508 a.a) full-length human protein.
<b>Sequence</b>	MLRRALLCLAVAALVRADAPEEEDHVLVLRKSNFAEALAAHKYLLVEFYAPWCGHCKALAPEYA KAAGKLKAEAGSEIRLAKVDATEESDLAQQYGVRGYPTIKFFRNGDTASPKEYTAGREADDIVNWL KKRTGPAATTLPGAAAESLVESSEVAVIGFFKDVESDSAKQFLQAAEAIDDIPFGITSNSDVFSK YQLDKDGVVLFKKFDEGRNMFEGEVTKENLLDFIKHNQLPLVIEFTEQTAPKIFGGEIKTHILLFLPK SVSDYDGKLSNFKTAAESFKGKILFIFIDSDHTDNQRILEFFGLKKEECPAVRLITLEEEMTKYPES EELTAERITEFCHRFLEGKIKPHLMSQELPEDWDKQPVKVLVGKNFEDVAFDEKKNVFEFYAP WCGHCKQLAPIMDKLGETYKDHENVIAKMDSTANEVEAVKVHSFPTLKFFPASADRTVIDYNGE RTLDGFKKFLESQGGQDGAGDDDDLEDEEAEEPDMEEEDDDQKAVKDEL
<b>Host</b>	Rabbit
<b>Reactivity</b>	Human, Mouse
<b>Interspecies Antigen Sequence</b>	Mouse (95)
<b>Quality Control Testing</b>	Antibody reactive against mammalian transfected lysate.
<b>Storage Buffer</b>	In 1x PBS, pH 7.4
<b>Storage Instruction</b>	Store at -20°C or lower. Aliquot to avoid repeated freezing and thawing.

## Applications

- Western Blot (Tissue lysate)

P4HB MaxPab rabbit polyclonal antibody. Western Blot analysis of P4HB expression in mouse kidney.

[Protocol Download](#)

- Western Blot (Tissue lysate)

P4HB MaxPab rabbit polyclonal antibody. Western Blot analysis of P4HB expression in human liver.

[Protocol Download](#)

- Western Blot (Cell lysate)

P4HB MaxPab rabbit polyclonal antibody. Western Blot analysis of P4HB expression in Jurkat.

[Protocol Download](#)

- Western Blot (Transfected lysate)

Western Blot analysis of P4HB expression in transfected 293T cell line ([H00005034-T02](#)) by P4HB MaxPab polyclonal antibody.

Lane 1: P4HB transfected lysate(57.10 KDa).

Lane 2: Non-transfected lysate.

[Protocol Download](#)

- Immunofluorescence

Immunofluorescence of purified MaxPab antibody to P4HB on HeLa cell. [antibody concentration 5 ug/ml]

## Gene Info — P4HB

Entrez GeneID	<a href="#">5034</a>
---------------	----------------------

GeneBank Accession#	<a href="#">NM_000918.2</a>
---------------------	-----------------------------

Protein Accession#	<a href="#">NP_000909.2</a>
--------------------	-----------------------------

Gene Name	P4HB
-----------	------

Gene Alias	DSI, ERBA2L, GIT, P4Hbeta, PDI, PDIA1, PHDB, PO4DB, PO4HB, PROHB
------------	--

Gene Description	prolyl 4-hydroxylase, beta polypeptide
------------------	--

Omim ID	<a href="#">176790</a>
---------	------------------------

Gene Ontology	<a href="#">Hyperlink</a>
---------------	---------------------------

**Gene Summary**

This gene encodes the beta subunit of prolyl 4-hydroxylase, a highly abundant multifunctional enzyme that belongs to the protein disulfide isomerase family. When present as a tetramer consisting of two alpha and two beta subunits, this enzyme is involved in hydroxylation of prolyl residues in procollagen. This enzyme is also a disulfide isomerase containing two thioredoxin domains that catalyze the formation, breakage and rearrangement of disulfide bonds. Other known functions include its ability to act as a chaperone that inhibits aggregation of misfolded proteins in a concentration-dependent manner, its ability to bind thyroid hormone, its role in both the influx and efflux of S-nitrosothiol-bound nitric oxide, and its function as a subunit of the microsomal triglyceride transfer protein complex. [provided by RefSeq]

**Other Designations**

collagen prolyl 4-hydroxylase beta|glutathione-insulin transhydrogenase|procollagen-proline, 2-oxo glutarate 4-dioxygenase (proline 4-hydroxylase), beta polypeptide|prolyl 4-hydroxylase, beta subunit|protein disulfide isomerase family A, member 1|protein d

**Disease**

- [Cardiovascular Diseases](#)
- [Diabetes Mellitus](#)
- [Edema](#)