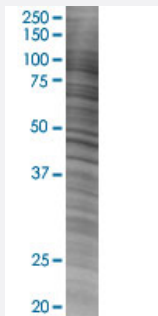


# NOV 293T Cell Transient Overexpression Lysate(Denatured)

Catalog # H00004856-T02

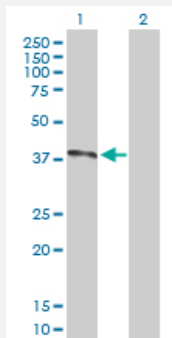
Size 100 uL

## Applications



### SDS-PAGE Gel

NOV transfected lysate.



### Western Blot

Lane 1: NOV transfected lysate ( 39.20 KDa)

Lane 2: Non-transfected lysate.

## Specification

**Transfected Cell Line** 293T

**Plasmid** pCMV-NOV full-length

**Host** Human

**Theoretical MW (kDa)** 39.2

**Quality Control Testing** Transient overexpression cell lysate was tested with Anti-NOV antibody ([H00004856-D01P](#)) by Western Blots.  
SDS-PAGE Gel  
NOV transfected lysate.  
Western Blot  
Lane 1: NOV transfected lysate ( 39.20 KDa)  
Lane 2: Non-transfected lysate.

**Storage Buffer**

1X Sample Buffer (50 mM Tris-HCl, 2% SDS, 10% glycerol, 300 mM 2-mercaptoethanol, 0.01% Bromophenol blue)

**Storage Instruction**

Store at -80°C. Aliquot to avoid repeated freezing and thawing.

## Applications

- Western Blot

## Gene Info — NOV

**Entrez GeneID**[4856](#)**GeneBank Accession#**[BC015028.1](#)**Protein Accession#**[AAH15028.1](#)**Gene Name**

NOV

**Gene Alias**

CCN3, IGFBP9

**Gene Description**

nephroblastoma overexpressed gene

**Omim ID**[164958](#)**Gene Ontology**[Hyperlink](#)**Gene Summary**

The protein encoded by this gene is a small secreted cysteine-rich protein and a member of the CCN family of regulatory proteins. CCN family proteins associate with the extracellular matrix and play an important role in cardiovascular and skeletal development, fibrosis and cancer development . [provided by RefSeq]

**Other Designations**

nephroblastoma overexpressed