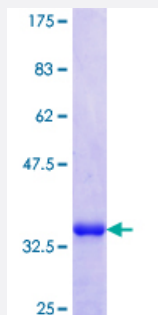


NOV (Human) Recombinant Protein (Q01)

Catalog # H00004856-Q01

Size 25 ug, 10 ug

Applications



Specification

Product Description	Human NOV partial ORF (NP_002505.1, 32 a.a. - 131 a.a.) recombinant protein with GST-tag at N-terminal.
Sequence	TQRCPPQCPGRCPATPPTCAPGVRAVLDCSCCLVCARQRGESCSDLEPCDESSGLYCDRSA DPSNQTGICTAVEGDNCVFDGVIYRSGEKFQPSCKFQC
Host	Wheat Germ (in vitro)
Theoretical MW (kDa)	36.63
Preparation Method	in vitro wheat germ expression system
Purification	Glutathione Sepharose 4 Fast Flow
Quality Control Testing	12.5% SDS-PAGE Stained with Coomassie Blue.
Storage Buffer	50 mM Tris-HCl, 10 mM reduced Glutathione, pH=8.0 in the elution buffer.
Storage Instruction	Store at -80°C. Aliquot to avoid repeated freezing and thawing.
Note	Best use within three months from the date of receipt of this protein.

Applications

- Enzyme-linked Immunoabsorbent Assay
- Western Blot (Recombinant protein)
- Antibody Production
- Protein Array

Gene Info — NOV

Entrez GeneID [4856](#)

GeneBank Accession# [NM_002514](#)

Protein Accession# [NP_002505.1](#)

Gene Name NOV

Gene Alias CCN3, IGFBP9

Gene Description nephroblastoma overexpressed gene

Omim ID [164958](#)

Gene Ontology [Hyperlink](#)

Gene Summary The protein encoded by this gene is a small secreted cysteine-rich protein and a member of the CCN family of regulatory proteins. CCN family proteins associate with the extracellular matrix and play an important role in cardiovascular and skeletal development, fibrosis and cancer development . [provided by RefSeq]

Other Designations nephroblastoma overexpressed