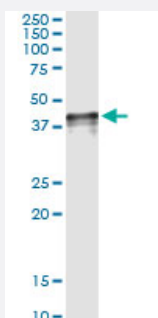


NOV (Human) IP-WB Antibody Pair

Catalog # H00004856-PW2

Size 1 Set

Applications



Immunoprecipitation of NOV transfected lysate using mouse monoclonal anti-NOV and Protein A Magnetic Bead ([U0007](#)), and immunoblotted with rabbit polyclonal anti-NOV.

Specification

Product Description	This IP-WB antibody pair set comes with one antibody for immunoprecipitation and another to detect the precipitated protein in western blot.
Reactivity	Human
Quality Control Testing	Immunoprecipitation-Western Blot (IP-WB) Immunoprecipitation of NOV transfected lysate using mouse monoclonal anti-NOV and Protein A Magnetic Bead (U0007), and immunoblotted with rabbit polyclonal anti-NOV.
Supplied Product	Antibody pair set content: 1. Antibody pair for IP: mouse monoclonal anti-NOV (300 ug) 2. Antibody pair for WB: rabbit polyclonal anti-NOV (50 ul)
Storage Instruction	Store reagents of the antibody pair set at -20°C or lower. Please aliquot to avoid repeated freeze thaw cycle. Reagents should be returned to -20°C storage immediately after use.

Applications

- Immunoprecipitation-Western Blot

[Protocol Download](#)

Gene Info — NOV

Entrez GeneID	4856
Gene Name	NOV
Gene Alias	CCN3, IGFBP9
Gene Description	nephroblastoma overexpressed gene
Omim ID	164958
Gene Ontology	Hyperlink
Gene Summary	<p>The protein encoded by this gene is a small secreted cysteine-rich protein and a member of the CCN family of regulatory proteins. CCN family proteins associate with the extracellular matrix and play an important role in cardiovascular and skeletal development, fibrosis and cancer development . [provided by RefSeq]</p>
Other Designations	nephroblastoma overexpressed