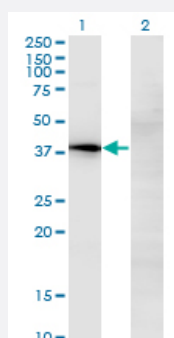


NOV monoclonal antibody (M02), clone 2G8

Catalog # H00004856-M02

Size 100 ug

Applications

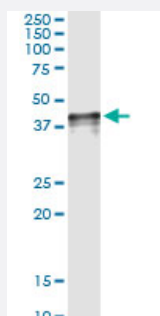


Western Blot (Transfected lysate)

Western Blot analysis of NOV expression in transfected 293T cell line by NOV monoclonal antibody (M02), clone 2G8.

Lane 1: NOV transfected lysate(39.2 KDa).

Lane 2: Non-transfected lysate.



Immunoprecipitation

Immunoprecipitation of NOV transfected lysate using anti-NOV monoclonal antibody and Protein A Magnetic Bead, and immunoblotted with NOV MaxPab rabbit polyclonal antibody.



Western Blot detection against Immunogen (36.63 KDa) .

Specification

Product Description

Mouse monoclonal antibody raised against a partial recombinant NOV.

Immunogen	NOV (NP_002505.1, 32 a.a. ~ 131 a.a) partial recombinant protein with GST tag. MW of the GST tag alone is 26 KDa.
Sequence	TQRCPPQCPGRCPATPPTCAPGVRAVL DGCSCCLVCARQRGESCS DLEPCDESSGLYCDRSA DPSNQTGICTAVEGDNCVFDGVIYRSGEKFQPSCKFQC
Host	Mouse
Reactivity	Human
Isotype	IgG2a Kappa
Quality Control Testing	Antibody Reactive Against Recombinant Protein. Western Blot detection against Immunogen (36.63 KDa) .
Storage Buffer	In 1x PBS, pH 7.4
Storage Instruction	Store at -20°C or lower. Aliquot to avoid repeated freezing and thawing.

Applications

- Western Blot (Transfected lysate)

Western Blot analysis of NOV expression in transfected 293T cell line by NOV monoclonal antibody (M02), clone 2G8.

Lane 1: NOV transfected lysate(39.2 KDa).

Lane 2: Non-transfected lysate.

[Protocol Download](#)

- Western Blot (Recombinant protein)

[Protocol Download](#)

- Immunoprecipitation

Immunoprecipitation of NOV transfected lysate using anti-NOV monoclonal antibody and Protein A Magnetic Bead, and immunoblotted with NOV MaxPab rabbit polyclonal antibody.

[Protocol Download](#)

- ELISA

Gene Info — NOV

Entrez GeneID [4856](#)

GeneBank Accession#	NM_002514
Protein Accession#	NP_002505.1
Gene Name	NOV
Gene Alias	CCN3, IGFBP9
Gene Description	nephroblastoma overexpressed gene
Omim ID	164958
Gene Ontology	Hyperlink
Gene Summary	<p>The protein encoded by this gene is a small secreted cysteine-rich protein and a member of the CCN family of regulatory proteins. CCN family proteins associate with the extracellular matrix and play an important role in cardiovascular and skeletal development, fibrosis and cancer development . [provided by RefSeq]</p>
Other Designations	nephroblastoma overexpressed