

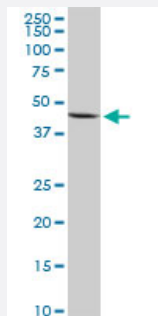
MaxPab®

NOV purified MaxPab rabbit polyclonal antibody (D01P)

Catalog # H00004856-D01P

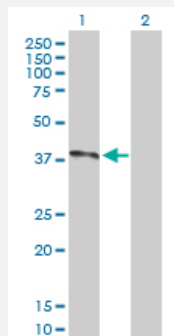
Size 100 ug

Applications



Western Blot (Cell lysate)

NOV MaxPab rabbit polyclonal antibody. Western Blot analysis of NOV expression in HeLa.



Western Blot (Transfected lysate)

Western Blot analysis of NOV expression in transfected 293T cell line ([H00004856-T02](#)) by NOV MaxPab polyclonal antibody.

Lane 1: NOV transfected lysate(39.20 KDa).

Lane 2: Non-transfected lysate.

Specification

Product Description

Rabbit polyclonal antibody raised against a full-length human NOV protein.

Immunogen

NOV (AAH15028.1, 1 a.a. ~ 357 a.a) full-length human protein.

Sequence

MQSVQSTSFCLRKQCLCLTFLLHLLGQVAATQRCPPQCPGRCPATPPTCAPGVRAVLDCSC
CLVCARQRGESCSLDLEPCDESSGLYCDRSADPSKQTGICTAVEGDNCVFDGVIYRSGEKFQPS
CKFQCTCRDGGQIGCVPRCQLDVLLPEPNCAPAPRKVEVPGECCCKWICGPDEEDSLGGLTLAAY
RPEATLGVEVSDSSVNCIEQTTEWTACSKSCGMGFSTRVTNRNRQCEMLKQTRLCMVRPCEQE
PEQPTDKKGKKCLRTKKS LKAHLQFKNCTSLHTYKPRFCGVCS DGRCTPHNTKTIQAEFQCSP
GQVKKPVMVIGTCTCHTNCPKNNEAFLQELELKTTRGKM

Host

Rabbit

Reactivity	Human
Quality Control Testing	Antibody reactive against mammalian transfected lysate.
Storage Buffer	In 1x PBS, pH 7.4
Storage Instruction	Store at -20°C or lower. Aliquot to avoid repeated freezing and thawing.

Applications

- Western Blot (Cell lysate)

NOV MaxPab rabbit polyclonal antibody. Western Blot analysis of NOV expression in HeLa.

[Protocol Download](#)

- Western Blot (Transfected lysate)

Western Blot analysis of NOV expression in transfected 293T cell line ([H00004856-T02](#)) by NOV MaxPab polyclonal antibody.

Lane 1: NOV transfected lysate(39.20 KDa).

Lane 2: Non-transfected lysate.

[Protocol Download](#)

Gene Info — NOV

Entrez GeneID	4856
GeneBank Accession#	BC015028.1
Protein Accession#	AAH15028.1
Gene Name	NOV
Gene Alias	CCN3, IGFBP9
Gene Description	nephroblastoma overexpressed gene
Omim ID	164958
Gene Ontology	Hyperlink
Gene Summary	The protein encoded by this gene is a small secreted cysteine-rich protein and a member of the C CN family of regulatory proteins. CNN family proteins associate with the extracellular matrix and play an important role in cardiovascular and skeletal development, fibrosis and cancer development . [provided by RefSeq

Other Designationsnephroblastoma overexpressed
