

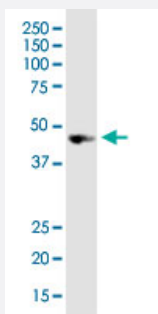
CX Grade

NODAL monoclonal antibody (M03J), clone 5C3

Catalog # H00004838-M03J

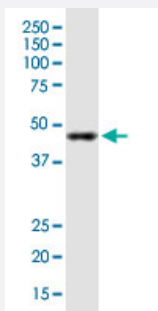
Size 100 ug

Applications



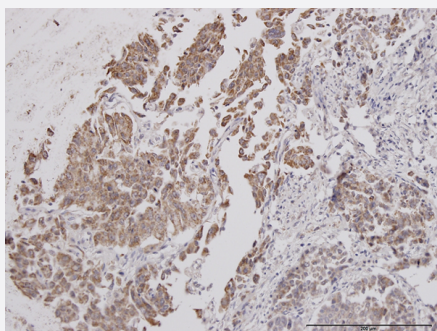
Western Blot (Cell lysate)

NODAL monoclonal antibody (M03J), clone 5C3. Western Blot analysis of NODAL expression in PC-12.



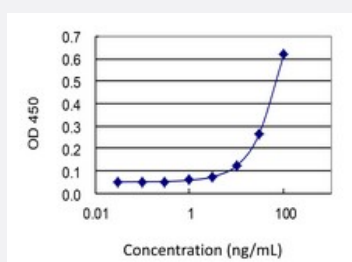
Western Blot (Cell lysate)

NODAL monoclonal antibody (M03J), clone 5C3. Western Blot analysis of NODAL expression in Jurkat.



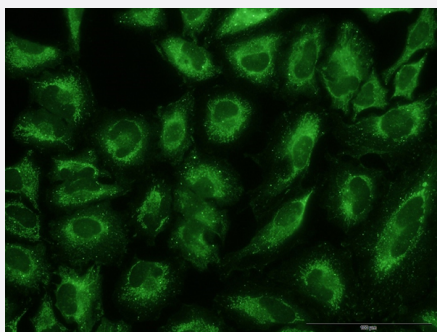
Immunohistochemistry (Formalin/PFA-fixed paraffin-embedded sections)

Immunoperoxidase of monoclonal antibody to NODAL on formalin-fixed paraffin-embedded human endometrium cancer. [antibody concentration 3 ug/ml]



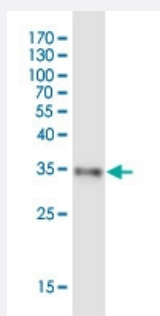
Sandwich ELISA (Recombinant protein)

Detection limit for recombinant GST tagged NODAL is 3 ng/ml as a capture antibody.



Immunofluorescence

Immunofluorescence of monoclonal antibody to NODAL on HeLa cell .
[antibody concentration 10 ug/ml]



Western Blot detection against Immunogen (33.66 KDa) .

Specification

Product Description	Mouse monoclonal antibody raised against a partial recombinant NODAL. This product is belong to Cell Culture Grade Antibody (CX Grade).
Immunogen	NODAL (NP_060525, 275 a.a. ~ 346 a.a) partial recombinant protein with GST tag. MW of the GST tag alone is 26 KDa.
Sequence	RCEGECPNPVGEEFHPTNHAYQSLKRYQPHRVPSTCCAPVKTPLSMLYVDNGRVLLDHHKD MIVEECGC
Host	Mouse
Reactivity	Human, Mouse, Rat
Interspecies Antigen Sequence	Mouse (99); Rat (99)
Preparation Method	Cell Culture Production
Isotype	IgG1 Kappa
Quality Control Testing	Antibody Reactive Against Recombinant Protein. Western Blot detection against Immunogen (33.66 KDa) .
Storage Buffer	In 1x PBS, pH 7.4
Storage Instruction	Store at -20°C or lower. Aliquot to avoid repeated freezing and thawing.

Applications

- Western Blot (Cell lysate)

NODAL monoclonal antibody (M03J), clone 5C3. Western Blot analysis of NODAL expression in PC-12.

[Protocol Download](#)

- Western Blot (Cell lysate)

NODAL monoclonal antibody (M03J), clone 5C3. Western Blot analysis of NODAL expression in Jurkat.

[Protocol Download](#)

- Western Blot (Recombinant protein)

[Protocol Download](#)

- Immunohistochemistry (Formalin/PFA-fixed paraffin-embedded sections)

Immunoperoxidase of monoclonal antibody to NODAL on formalin-fixed paraffin-embedded human endometrium cancer. [antibody concentration 3 ug/ml]

[Protocol Download](#)

- Sandwich ELISA (Recombinant protein)

Detection limit for recombinant GST tagged NODAL is 3 ng/ml as a capture antibody.

[Protocol Download](#)

- ELISA

- Immunofluorescence

Immunofluorescence of monoclonal antibody to NODAL on HeLa cell . [antibody concentration 10 ug/ml]

Gene Info — NODAL

Entrez GeneID [4838](#)

GeneBank Accession# [NM_018055](#)

Protein Accession# [NP_060525](#)

Gene Name NODAL

Gene Alias	MGC138230
Gene Description	nodal homolog (mouse)
Omim ID	601265
Gene Ontology	Hyperlink
Gene Summary	The protein encoded by this gene is a member of the TGF-beta superfamily. Studies of the mouse counterpart suggested that this gene may be essential for mesoderm formation and subsequent organization of axial structures in early embryonic development. [provided by RefSeq]
Other Designations	OTTHUMP00000019754 nodal nodal, mouse, homolog

Pathway

- [TGF-beta signaling pathway](#)

Disease

- [Alzheimer Disease](#)
- [Cardiovascular Abnormalities](#)
- [Cardiovascular Diseases](#)
- [Diabetes Mellitus](#)
- [Edema](#)
- [Genetic Predisposition to Disease](#)
- [Head and Neck Neoplasms](#)
- [Neoplasm Recurrence](#)
- [Neoplasms](#)
- [Obesity](#)
- [Ovarian Failure](#)
- [Polycystic Ovary Syndrome](#)
- [Puberty](#)

- [Thrombophilia](#)
- [Tobacco Use Disorder](#)