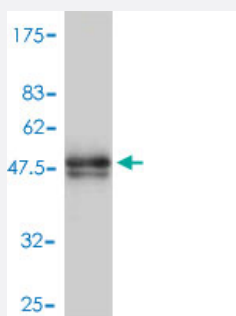


## MYL4 polyclonal antibody (A01)

Catalog # H00004635-A01

Size 50  $\mu$ L

## Applications



Western Blot detection against Immunogen (47.78 KDa) .

## Specification

Product Description	Mouse polyclonal antibody raised against a full-length recombinant MYL4.
Immunogen	MYL4 (AAH30228, 1 a.a. ~ 197 a.a) full-length recombinant protein with GST tag.
Sequence	MAPKKPEPKKEAAKPAPAPAPAPAPAPAPEAPKEPAFDPKSVKIDFTADQIEEFKEAFSLFD RTPTGEMKITYGQCGLVLRALGQNPTNAEVLRLVLGKPKPEEMNVKMLDFETFPLILQHISRNKEQ GTYEDFVEGLRVFDKESNGTVMGAELRHVLATLGEKMTEAEVEQLLAGQEDANGCINYEAFVKHI MSG
Host	Mouse
Reactivity	Human
Quality Control Testing	Antibody Reactive Against Recombinant Protein. Western Blot detection against Immunogen (47.78 KDa) .
Storage Buffer	50 % glycerol
Storage Instruction	Store at -20°C or lower. Aliquot to avoid repeated freezing and thawing.

## Applications

- Western Blot (Recombinant protein)

[Protocol Download](#)

- ELISA

## Gene Info — MYL4

Entrez GeneID [4635](#)

GeneBank Accession# [BC030228](#)

Protein Accession# [AAH30228](#)

Gene Name MYL4

Gene Alias ALC1, AMLC, GT1, PRO1957

Gene Description myosin, light chain 4, alkali; atrial, embryonic

Omim ID [160770](#)

Gene Ontology [Hyperlink](#)

**Gene Summary** Myosin is a hexameric ATPase cellular motor protein. It is composed of two myosin heavy chains, two nonphosphorylatable myosin alkali light chains, and two phosphorylatable myosin regulatory light chains. This gene encodes a myosin alkali light chain that is found in embryonic muscle and adult atria. Two alternatively spliced transcript variants encoding the same protein have been found for this gene. [provided by RefSeq]

**Other Designations** atrial/embryonic alkali myosin light chain|myosin, atrial/fetal muscle, light chain|myosin, light polypeptide 4, alkali; atrial, embryonic

## Pathway

- [Cardiac muscle contraction](#)