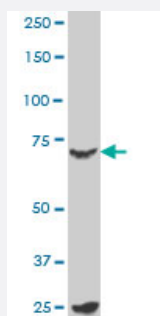


MYBL2 monoclonal antibody (M02), clone 1C7

Catalog # H00004605-M02

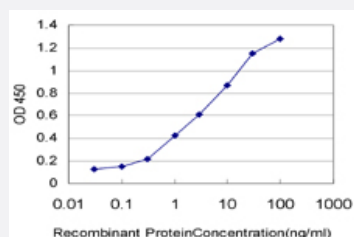
Size 100 ug

Applications



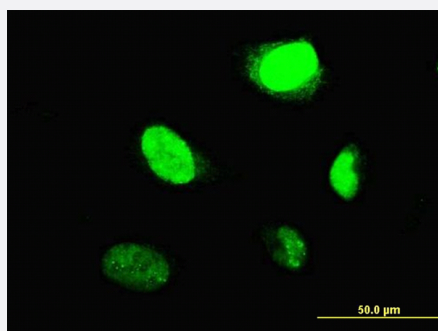
Western Blot (Cell lysate)

MYBL2 monoclonal antibody (M02), clone 1C7 Western Blot analysis of MYBL2 expression in K-562 (Cat # L009V1).



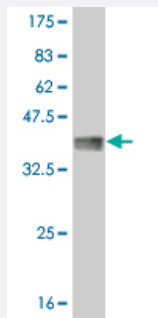
Sandwich ELISA (Recombinant protein)

Detection limit for recombinant GST tagged MYBL2 is approximately 0.03ng/ml as a capture antibody.



Immunofluorescence

Immunofluorescence of monoclonal antibody to MYBL2 on HeLa cell. [antibody concentration 10 ug/ml]



Western Blot detection against Immunogen (36.63 KDa) .

Specification

Product Description	Mouse monoclonal antibody raised against a partial recombinant MYBL2.
Immunogen	MYBL2 (AAH53555, 601 a.a. ~ 700 a.a) partial recombinant protein with GST tag. MW of the GST tag alone is 26 KDa.
Sequence	TLPKSLSLPTTAPSNSSSLTSGIKEDNSLLNQGFLLQAKPEKAAVAQKPRSHFTTPAPMSSAWKT VACGGTRDQLFMQEAKRQLLGRLKPSHTSRTLILS
Host	Mouse
Reactivity	Human
Isotype	IgG1 Kappa
Quality Control Testing	Antibody Reactive Against Recombinant Protein. Western Blot detection against Immunogen (36.63 KDa) .
Storage Buffer	In 1x PBS, pH 7.4
Storage Instruction	Store at -20°C or lower. Aliquot to avoid repeated freezing and thawing.

Applications

- Western Blot (Cell lysate)

MYBL2 monoclonal antibody (M02), clone 1C7 Western Blot analysis of MYBL2 expression in K-562 (Cat # L009V1).

[Protocol Download](#)

- Western Blot (Recombinant protein)

[Protocol Download](#)

- Sandwich ELISA (Recombinant protein)

Detection limit for recombinant GST tagged MYBL2 is approximately 0.03ng/ml as a capture antibody.

[Protocol Download](#)

- ELISA
- Immunofluorescence

Immunofluorescence of monoclonal antibody to MYBL2 on HeLa cell. [antibody concentration 10 ug/ml]

Gene Info — MYBL2

Entrez GeneID [4605](#)

GeneBank Accession# [BC053555](#)

Protein Accession# [AAH53555](#)

Gene Name MYBL2

Gene Alias B-MYB, BMYB, MGC15600

Gene Description v-myb myeloblastosis viral oncogene homolog (avian)-like 2

Omim ID [601415](#)

Gene Ontology [Hyperlink](#)

Gene Summary The protein encoded by this gene, a member of the MYB family of transcription factor genes, is a nuclear protein involved in cell cycle progression. The encoded protein is phosphorylated by cyclin A/cyclin-dependent kinase 2 during the S-phase of the cell cycle and possesses both activator and repressor activities. It has been shown to activate the cell division cycle 2, cyclin D1, and insulin-like growth factor-binding protein 5 genes. Transcript variants may exist for this gene, but their full-length natures have not been determined. [provided by RefSeq]

Other Designations MYB-related protein B|OTTHUMP00000031719|v-myb avian myeloblastosis viral oncogene homolog-like 2

Disease

- [Genetic Predisposition to Disease](#)
- [Lung Neoplasms](#)

- [Pulmonary Disease](#)
- [Urinary Bladder Neoplasms](#)
- [Werner syndrome](#)