

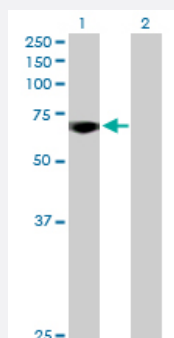
MaxPab®

MYBL2 purified MaxPab rabbit polyclonal antibody (D01P)

Catalog # H00004605-D01P

Size 100 ug

Applications

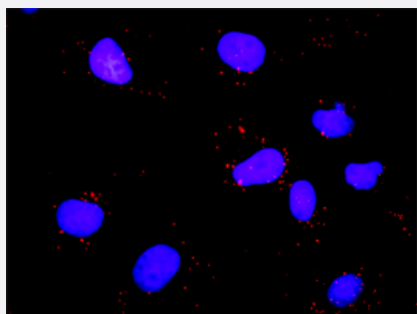


Western Blot (Transfected lysate)

Western Blot analysis of MYBL2 expression in transfected 293T cell line ([H00004605-T01](#)) by MYBL2 MaxPab polyclonal antibody.

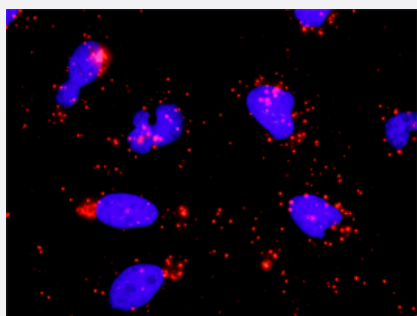
Lane 1: MYBL2 transfected lysate(78.80 KDa).

Lane 2: Non-transfected lysate.



In situ Proximity Ligation Assay (Cell)

Proximity Ligation Analysis of protein-protein interactions between MYBL2 and E2F1. Mahlavu cells were stained with anti-MYBL2 rabbit purified polyclonal 1:1200 and anti-E2F1 mouse monoclonal antibody 1:50. Each red dot represents the detection of protein-protein interaction complex, and nuclei were counterstained with DAPI (blue).



In situ Proximity Ligation Assay (Cell)

Proximity Ligation Analysis of protein-protein interactions between MYBL2 and E2F1. HeLa cells were stained with anti-MYBL2 rabbit purified polyclonal 1:1200 and anti-E2F1 mouse monoclonal antibody 1:50. Each red dot represents the detection of protein-protein interaction complex, and nuclei were counterstained with DAPI (blue).

Specification

Product Description

Rabbit polyclonal antibody raised against a full-length human MYBL2 protein.

Immunogen	MYBL2 (NP_002457.1, 1 a.a. ~ 700 a.a) full-length human protein.
Sequence	MSRRTRCEDLDELHYQD TSDVPEQRDSKCKVKWTHEEDEQLRALVRQFGQQDWKFLASHFP NRTDQQCQYRWLRVLNPDLVKGWPTKEEDQKVIELVKKYGTKQWTLIAKHLKGRLGKQCRERW HNHLNPEVKKSCWTEEEEDRIICEAHKVLGNRWAEIAKMLPGRTDNAVKNHWNSTIKRKVD TGGFL SESKDCKPPVYLLLELEDKDGLQSAQPTGQGSLLTNWPSVPPTIKEEENSEEELAAATTSKEQ EPIGTDLDAVRTPEPLEEFPKREDQEGSPPETSLPYKWVVEAANLLIPAVGSSLSEALDLIESDPD AWCDLSKFDLPPEPSAEDSINNSLVQLQASHQQQVLPPRQPSALVPSVTEYRLDGHTISDLSRS SRGELIPISPSTEVGGSGIGTPPSVLKRQRKRVALSPVTENSTLSFLDSCNSLTPKSTPVKTLPF SPSQFLNFWNKQDTLELESPSLTSTPVCSQKVVVTTPLHRDKTPLHQKHAAFVTPDQKYSMDNT PHTPTPFKNALEKYGPLKPLQTPHLEEDLKEVLRSEAGIELIIEDDIRPEKQKRKPGLRRSPIKKVR KSLALDIVDEDVKLMMSTLPKSLSLPTTAPSNSSSLTSGIKEDNSLLNQGFLQAKPEKA AVAQKP RSHFTTPAPMSSAWKTVACGGTRDQLFMQEKARQLLGRLKPSHTSRTLIS
Host	Rabbit
Reactivity	Human
Quality Control Testing	Antibody reactive against mammalian transfected lysate.
Storage Buffer	In 1x PBS, pH 7.4
Storage Instruction	Store at -20°C or lower. Aliquot to avoid repeated freezing and thawing.

Applications

- Western Blot (Transfected lysate)

Western Blot analysis of MYBL2 expression in transfected 293T cell line ([H00004605-T01](#)) by MYBL2 MaxPab polyclonal antibody.

Lane 1: MYBL2 transfected lysate(78.80 KDa).

Lane 2: Non-transfected lysate.

[Protocol Download](#)

- In situ* Proximity Ligation Assay (Cell)

Proximity Ligation Analysis of protein-protein interactions between MYBL2 and E2F1. Mahlavu cells were stained with anti-MYBL2 rabbit purified polyclonal 1:1200 and anti-E2F1 mouse monoclonal antibody 1:50. Each red dot represents the detection of protein-protein interaction complex, and nuclei were counterstained with DAPI (blue).

- In situ* Proximity Ligation Assay (Cell)

Proximity Ligation Analysis of protein-protein interactions between MYBL2 and E2F1. HeLa cells were stained with anti-MYBL2 rabbit purified polyclonal 1:1200 and anti-E2F1 mouse monoclonal antibody 1:50. Each red dot represents the detection of protein-protein interaction complex, and nuclei were counterstained with DAPI (blue).

Gene Info — MYBL2

Entrez GeneID [4605](#)**GeneBank Accession#** [NM_002466.2](#)**Protein Accession#** [NP_002457.1](#)**Gene Name** MYBL2**Gene Alias** B-MYB, BMYB, MGC15600**Gene Description** v-myb myeloblastosis viral oncogene homolog (avian)-like 2**Omim ID** [601415](#)**Gene Ontology** [Hyperlink](#)

Gene Summary The protein encoded by this gene, a member of the MYB family of transcription factor genes, is a nuclear protein involved in cell cycle progression. The encoded protein is phosphorylated by cyclin A/cyclin-dependent kinase 2 during the S-phase of the cell cycle and possesses both activator and repressor activities. It has been shown to activate the cell division cycle 2, cyclin D1, and insulin-like growth factor-binding protein 5 genes. Transcript variants may exist for this gene, but their full-length natures have not been determined. [provided by RefSeq]

Other Designations MYB-related protein B|OTTHUMP00000031719|v-myb avian myeloblastosis viral oncogene homolog-like 2

Disease

- [Genetic Predisposition to Disease](#)
- [Lung Neoplasms](#)
- [Pulmonary Disease](#)
- [Urinary Bladder Neoplasms](#)
- [Werner syndrome](#)