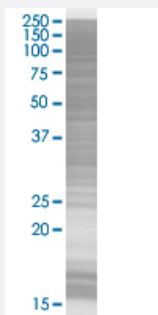


# MX2 293T Cell Transient Overexpression Lysate(Denatured)

Catalog # H00004600-T01

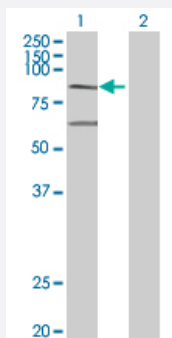
Size 100 uL

## Applications



### SDS-PAGE Gel

MX2 transfected lysate.



### Western Blot

Lane 1: MX2 transfected lysate ( 78.76 KDa)

Lane 2: Non-transfected lysate.

## Specification

**Transfected Cell Line** 293T

**Plasmid** pCMV-MX2 full-length

**Host** Human

**Theoretical MW (kDa)** 78.76

**Quality Control Testing** Transient overexpression cell lysate was tested with Anti-MX2 antibody ([H00004600-B01](#)) by Western Blots.  
 SDS-PAGE Gel  
 MX2 transfected lysate.  
 Western Blot  
 Lane 1: MX2 transfected lysate ( 78.76 KDa)  
 Lane 2: Non-transfected lysate.

**Storage Buffer**

1X Sample Buffer (50 mM Tris-HCl, 2% SDS, 10% glycerol, 300 mM 2-mercaptoethanol, 0.01% Bromophenol blue)

**Storage Instruction**

Store at -80°C. Aliquot to avoid repeated freezing and thawing.

## Applications

- Western Blot

## Gene Info — MX2

**Entrez GeneID**[4600](#)**GeneBank Accession#**[BC035293](#)**Protein Accession#**[AAH35293](#)**Gene Name**

MX2

**Gene Alias**

MXB

**Gene Description**

myxovirus (influenza virus) resistance 2 (mouse)

**Omim ID**[147890](#)**Gene Ontology**[Hyperlink](#)**Gene Summary**

The protein encoded by this gene has a nuclear and a cytoplasmic form and is a member of both the dynamin family and the family of large GTPases. The nuclear form is localized in a granular pattern in the heterochromatin region beneath the nuclear envelope. A nuclear localization signal (NLS) is present at the amino terminal end of the nuclear form but is lacking in the cytoplasmic form due to use of an alternate translation start codon. This protein is upregulated by interferon-alpha but does not contain the antiviral activity of a similar myxovirus resistance protein 1. [provided by RefSeq]

**Other Designations**

interferon-regulated resistance GTP-binding protein MXB|myxovirus resistance protein 2|second interferon-induced protein p78

## Disease

- [Cardiovascular Diseases](#)
- [Cataplexy](#)

- [Diabetes Mellitus](#)
- [Edema](#)
- [Hepatitis C](#)
- [Narcolepsy](#)