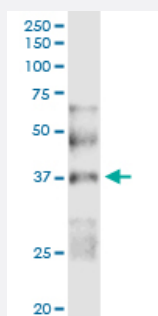


# MSI1 (Human) IP-WB Antibody Pair

Catalog # H00004440-PW2

Size 1 Set

## Applications



Immunoprecipitation of MSI1 transfected lysate using rabbit polyclonal anti-MSI1 and Protein A Magnetic Bead ([U0007](#)), and immunoblotted with mouse purified polyclonal anti-MSI1.

## Specification

<b>Product Description</b>	This IP-WB antibody pair set comes with one antibody for immunoprecipitation and another to detect the precipitated protein in western blot.
<b>Reactivity</b>	Human
<b>Quality Control Testing</b>	Immunoprecipitation-Western Blot (IP-WB) Immunoprecipitation of MSI1 transfected lysate using rabbit polyclonal anti-MSI1 and Protein A Magnetic Bead ( <a href="#">U0007</a> ), and immunoblotted with mouse purified polyclonal anti-MSI1.
<b>Supplied Product</b>	Antibody pair set content: 1. Antibody pair for IP: rabbit polyclonal anti-MSI1 (300 ul) 2. Antibody pair for WB: mouse purified polyclonal anti-MSI1 (50 ug)
<b>Storage Instruction</b>	Store reagents of the antibody pair set at -20°C or lower. Please aliquot to avoid repeated freeze thaw cycle. Reagents should be returned to -20°C storage immediately after use.

## Applications

- Immunoprecipitation-Western Blot

[Protocol Download](#)

## Gene Info — MSI1

**Entrez GeneID** [4440](#)**Gene Name** MSI1**Gene Alias** -**Gene Description** musashi homolog 1 (Drosophila)**Omim ID** [603328](#)**Gene Ontology** [Hyperlink](#)

**Gene Summary** This gene encodes a protein containing two conserved tandem RNA recognition motifs. Similar proteins in other species function as RNA-binding proteins and play central roles in posttranscriptional gene regulation. Expression of this gene has been correlated with the grade of the malignancy and proliferative activity in gliomas and melanomas. A pseudogene for this gene is located on chromosome 11q13. [provided by RefSeq]

**Other Designations** musashi 1