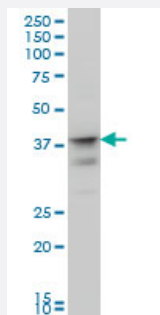


MSI1 monoclonal antibody (M04), clone 3F2

Catalog # H00004440-M04

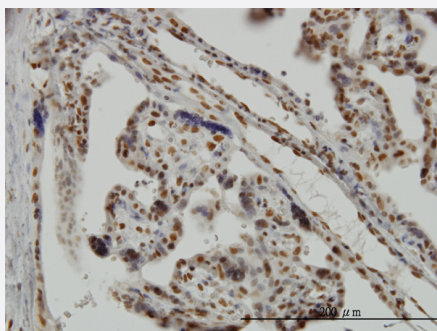
Size 100 ug

Applications



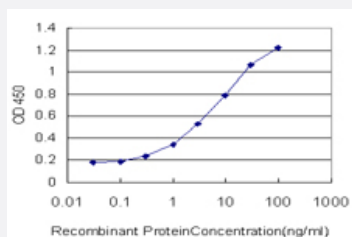
Western Blot (Cell lysate)

MSI1 monoclonal antibody (M04), clone 3F2 Western Blot analysis of MSI1 expression in IMR-32 (Cat # L008V1).



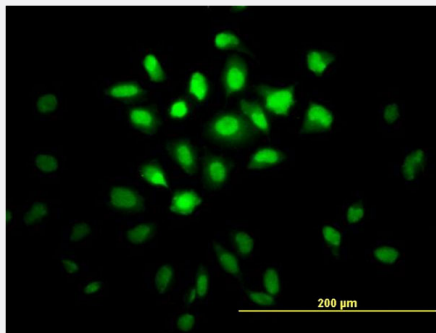
Immunohistochemistry (Formalin/PFA-fixed paraffin-embedded sections)

Immunoperoxidase of monoclonal antibody to MSI1 on formalin-fixed paraffin-embedded human placenta. [antibody concentration 3 ug/ml]



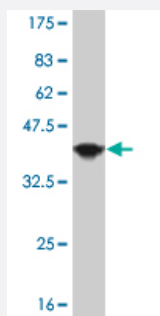
Sandwich ELISA (Recombinant protein)

Detection limit for recombinant GST tagged MSI1 is approximately 0.3ng/ml as a capture antibody.



Immunofluorescence

Immunofluorescence of monoclonal antibody to MSI1 on HeLa cell. [antibody concentration 10 ug/ml]



Western Blot detection against Immunogen (35.57 KDa) .

Specification

Product Description	Mouse monoclonal antibody raised against a full length recombinant MSI1.
Immunogen	MSI1 (NP_002433, 1 a.a. ~ 87 a.a) full length recombinant protein with GST tag. MW of the GST tag alone is 26 KDa.
Sequence	METDAPQPGL ASPDSPHDPC KMFIGGLSWQ TTQEGLREYF GQFGE VKECL VMRDPLTKRS RGFGFVTFMD QAGVDKVLAQ SRHELD
Host	Mouse
Reactivity	Human
Isotype	IgG2a Kappa
Quality Control Testing	Antibody Reactive Against Recombinant Protein. Western Blot detection against Immunogen (35.57 KDa) .
Storage Buffer	In 1x PBS, pH 7.4
Storage Instruction	Store at -20°C or lower. Aliquot to avoid repeated freezing and thawing.

Applications

- Western Blot (Cell lysate)

MSI1 monoclonal antibody (M04), clone 3F2 Western Blot analysis of MSI1 expression in IMR-32 (Cat # L008V1).

[Protocol Download](#)

- Western Blot (Recombinant protein)

[Protocol Download](#)

- Immunohistochemistry (Formalin/PFA-fixed paraffin-embedded sections)

Immunoperoxidase of monoclonal antibody to MSI1 on formalin-fixed paraffin-embedded human placenta. [antibody concentration 3 ug/ml]

[Protocol Download](#)

- Sandwich ELISA (Recombinant protein)

Detection limit for recombinant GST tagged MSI1 is approximately 0.3ng/ml as a capture antibody.

[Protocol Download](#)

- ELISA

- Immunofluorescence

Immunofluorescence of monoclonal antibody to MSI1 on HeLa cell. [antibody concentration 10 ug/ml]

Gene Info — MSI1

Entrez GeneID	4440
---------------	----------------------

GeneBank Accession#	NM_002442
---------------------	---------------------------

Protein Accession#	NP_002433
--------------------	---------------------------

Gene Name	MSI1
-----------	------

Gene Alias	-
------------	---

Gene Description	musashi homolog 1 (Drosophila)
------------------	--------------------------------

Omim ID	603328
---------	------------------------

Gene Ontology	Hyperlink
---------------	---------------------------

Gene Summary

This gene encodes a protein containing two conserved tandem RNA recognition motifs. Similar proteins in other species function as RNA-binding proteins and play central roles in posttranscriptional gene regulation. Expression of this gene has been correlated with the grade of the malignancy and proliferative activity in gliomas and melanomas. A pseudogene for this gene is located on chromosome 11q13. [provided by RefSeq]

Other Designations

musashi 1

Publication Reference

- [Thyroid hormone-induced expression of Foxl1 in subepithelial fibroblasts correlates with adult stem cell development during Xenopus intestinal remodeling.](#)

Takashi Hasebe, Kenta Fujimoto, Atsuko Ishizuya-Oka.

Scientific Reports 2020 Nov; 10(1):20715.

Application: IF, IHC-P, WB-Tr, Frog, Frog small intestine, In vitro-translated proteins

- [Drug-resistant colon cancer cells produce high carcinoembryonic antigen and might not be cancer-initiating cells.](#)

Lee HC, Ling QD, Yu WC, Hung CM, Kao TC, Huang YW, Higuchi A.

Drug Design, Development and Therapy 2013 Jun; 7:491.

Application: IS, Human, LoVo cells