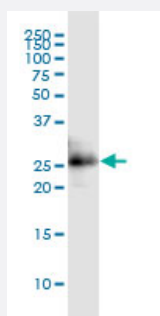


CITED1 monoclonal antibody (M02), clone 6C1

Catalog # H00004435-M02

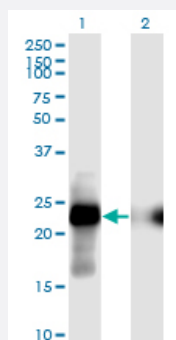
Size 100 ug

Applications



Western Blot (Cell lysate)

CITED1 monoclonal antibody (M02), clone 6C1. Western Blot analysis of CITED1 expression in C32.

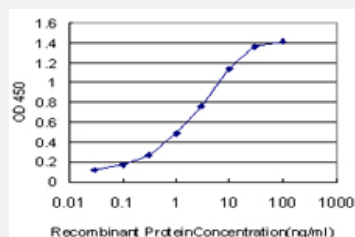


Western Blot (Transfected lysate)

Western Blot analysis of CITED1 expression in transfected 293T cell line by CITED1 monoclonal antibody (M02), clone 6C1.

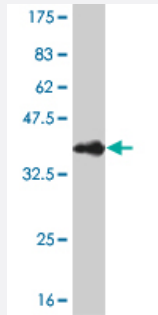
Lane 1: CITED1 transfected lysate(19.9 KDa).

Lane 2: Non-transfected lysate.



Sandwich ELISA (Recombinant protein)

Detection limit for recombinant GST tagged CITED1 is approximately 0.03ng/ml as a capture antibody.



Western Blot detection against Immunogen (36.74 KDa) .

Specification

Product Description	Mouse monoclonal antibody raised against a partial recombinant CITED1.
Immunogen	CITED1 (NP_004134, 94 a.a. ~ 193 a.a) partial recombinant protein with GST tag. MW of the GST tag alone is 26 KDa.
Sequence	SMQLQKLNSQYQGMAAATPGQPGEAGPLQNWDFGAQAGGAESLSPSAGAQSPAIDS DPVDEE VLMSLVVELGLDRANELPELWLGGQNEFDFTADFPSSC
Host	Mouse
Reactivity	Human
Interspecies Antigen Sequence	Mouse (72); Rat (77)
Isotype	IgG2a Kappa
Quality Control Testing	Antibody Reactive Against Recombinant Protein. Western Blot detection against Immunogen (36.74 KDa) .
Storage Buffer	In 1x PBS, pH 7.4
Storage Instruction	Store at -20°C or lower. Aliquot to avoid repeated freezing and thawing.

Applications

- Western Blot (Cell lysate)

CITED1 monoclonal antibody (M02), clone 6C1. Western Blot analysis of CITED1 expression in C32.

[Protocol Download](#)

- Western Blot (Transfected lysate)

Western Blot analysis of CITED1 expression in transfected 293T cell line by CITED1 monoclonal antibody (M02), clone 6C1.

Lane 1: CITED1 transfected lysate(19.9 KDa).

Lane 2: Non-transfected lysate.

[Protocol Download](#)

- Western Blot (Recombinant protein)

[Protocol Download](#)

- Sandwich ELISA (Recombinant protein)

Detection limit for recombinant GST tagged CITED1 is approximately 0.03ng/ml as a capture antibody.

[Protocol Download](#)

- ELISA

Gene Info — CITED1

Entrez GeneID [4435](#)

GeneBank Accession# [NM_004143](#)

Protein Accession# [NP_004134](#)

Gene Name CITED1

Gene Alias MSG1

Gene Description Cbp/p300-interacting transactivator, with Glu/Asp-rich carboxy-terminal domain, 1

Omim ID [300149](#)

Gene Ontology [Hyperlink](#)

Gene Summary This gene encodes a member of the CREB-binding protein/p300-interacting transactivator with A sp/Glu-rich C-terminal domain (CITED) family of proteins. The encoded protein, also known as m melanocyte-specific gene 1, may function as a transcriptional coactivator and may play a role in pig mentation of melanocytes. Alternatively spliced transcript variants have been described. [provided by RefSeq

Other Designations Cbp/p300-interacting transactivator 1|OTTHUMP00000023529|OTTHUMP00000023530