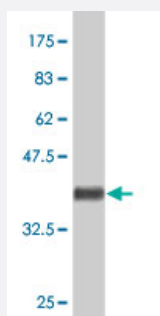


MRC1 polyclonal antibody (A01)

Catalog # H00004360-A01

Size 50 uL

Applications



Western Blot detection against Immunogen (38.1 KDa) .

Specification

Product Description	Mouse polyclonal antibody raised against a partial recombinant MRC1.
Immunogen	MRC1 (NP_002429, 22 a.a. ~ 130 a.a) partial recombinant protein with GST tag.
Sequence	TRQFLYNEDHKRCVDAVSPSAVQTAACNQDAESQKFRWVSESQIMSVAFKLCLGVPSKTDWV AITLYACDSKSEFQKWECKNDTLLGIKGEDLFFNYGNRQEKNIMLY
Host	Mouse
Reactivity	Human
Interspecies Antigen Sequence	Mouse (84); Rat (85)
Quality Control Testing	Antibody Reactive Against Recombinant Protein. Western Blot detection against Immunogen (38.1 KDa) .
Storage Buffer	50 % glycerol
Storage Instruction	Store at -20°C or lower. Aliquot to avoid repeated freezing and thawing.

Applications

- Western Blot (Recombinant protein)

[Protocol Download](#)

- ELISA

Gene Info — MRC1

Entrez GeneID [4360](#)

GeneBank Accession# [NM_002438](#)

Protein Accession# [NP_002429](#)

Gene Name MRC1

Gene Alias CD206, CLEC13D, MMR

Gene Description mannose receptor, C type 1

Omim ID [153618](#)

Gene Ontology [Hyperlink](#)

Gene Summary

The recognition of complex carbohydrate structures on glycoproteins is an important part of several biological processes, including cell-cell recognition, serum glycoprotein turnover, and neutralization of pathogens. The protein encoded by this gene is a type I membrane receptor that mediates the endocytosis of glycoproteins by macrophages. The protein has been shown to bind high-mannose structures on the surface of potentially pathogenic viruses, bacteria, and fungi so that they can be neutralized by phagocytic engulfment. This gene is in close proximity to MRC1L1. The gene loci including this gene, MRC1L1, as well as LOC340843 and LOC340893, consist of two nearly identical, tandemly linked genomic regions, which are thought to be a part of a duplicated region. [provided by RefSeq]

Other Designations OTTHUMP00000019245|OTTHUMP00000045206|macrophage mannose receptor|mannose receptor C type 1

Disease

- [Alzheimer Disease](#)
- [Asthma](#)
- [Colorectal Neoplasms](#)
- [Genetic Predisposition to Disease](#)

- [Leprosy](#)
- [Sarcoidosis](#)