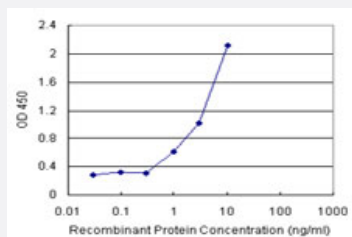


MPP1 (Human) Matched Antibody Pair

Catalog # H00004354-AP11

Size 1 Set

Applications



Sandwich ELISA detection sensitivity ranging from 1 ng/ml to 100 ng/ml.

Specification

Product Description	This antibody pair set comes with a matched antibody pair to detect and quantify the protein level of human MPP1.
Reactivity	Human
Quality Control Testing	Standard curve using recombinant protein (H00004354-P01) as an analyte. Sandwich ELISA detection sensitivity ranging from 1 ng/ml to 100 ng/ml.
Supplied Product	Antibody pair set content: 1. Capture antibody: rabbit MaxPab® affinity purified polyclonal anti-MPP1 (100 ug) 2. Detection antibody: mouse monoclonal anti-MPP1, IgG1 Kappa (20 ug) *Reagents are sufficient for at least 1-2 x 96 well plates using recommended protocols.
Storage Instruction	Store reagents of the antibody pair set at -20°C or lower. Please aliquot to avoid repeated freeze thaw cycle. Reagents should be returned to -20°C storage immediately after use.

Applications

- ELISA Pair (Recombinant protein)

[Protocol Download](#)

Gene Info — MPP1

Entrez GeneID	4354
Gene Name	MPP1
Gene Alias	AAG12, DXS552, DXS552E, EMP55, MRG1, PEMP
Gene Description	membrane protein, palmitoylated 1, 55kDa
Omim ID	305360
Gene Ontology	Hyperlink
Gene Summary	<p>Palmitoylated membrane protein 1 is the prototype of a family of membrane-associated proteins termed MAGUKs (membrane-associated guanylate kinase homologs). MAGUKs interact with the cytoskeleton and regulate cell proliferation, signaling pathways, and intracellular junctions. Palmitoylated membrane protein 1 contains a conserved sequence, called the SH3 (src homology 3) motif, found in several other proteins that associate with the cytoskeleton and are suspected to play important roles in signal transduction. [provided by RefSeq]</p>
Other Designations	OTTHUMP00000026054 aging-associated gene 12 erythrocyte membrane protein p55 membrane protein, palmitoylated 1 (55kD) palmitoylated membrane protein 1