

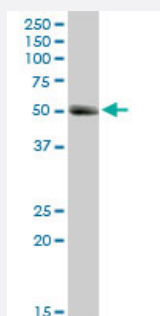
MaxPab®

MMP1 purified MaxPab rabbit polyclonal antibody (D01P)

Catalog # H00004312-D01P

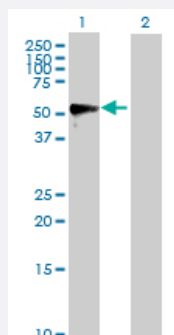
Size 100 ug

Applications



Western Blot (Tissue lysate)

MMP1 MaxPab rabbit polyclonal antibody. Western Blot analysis of MMP1 expression in human pancreas.

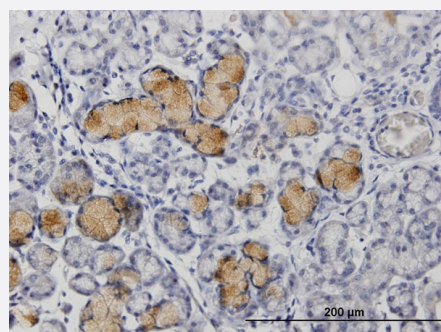


Western Blot (Transfected lysate)

Western Blot analysis of MMP1 expression in transfected 293T cell line ([H00004312-T01](#)) by MMP1 MaxPab polyclonal antibody.

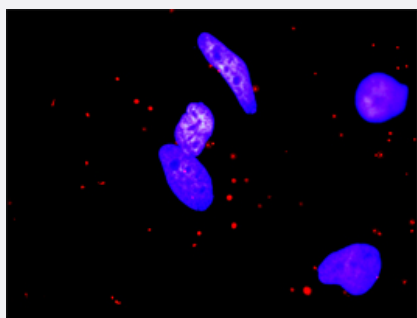
Lane 1: MMP1 transfected lysate(54.00 KDa).

Lane 2: Non-transfected lysate.



Immunohistochemistry (Formalin/PFA-fixed paraffin-embedded sections)

Immunoperoxidase of purified MaxPab rabbit antibody to MMP1 on formalin-fixed paraffin-embedded human colon. [antibody concentration 3 ug/ml]



In situ Proximity Ligation Assay (Cell)

Proximity Ligation Analysis of protein-protein interactions between MMP1 and F2R. HeLa cells were stained with anti-MMP1 rabbit purified polyclonal 1:1200 and anti-F2R mouse monoclonal antibody 1:50. Each red dot represents the detection of protein-protein interaction complex, and nuclei were counterstained with DAPI (blue).

Specification

Product Description	Rabbit polyclonal antibody raised against a full-length human MMP1 protein.
Immunogen	MMP1 (NP_002412.1, 1 a.a. ~ 469 a.a) full-length human protein.
Sequence	MHSFPPLLLLLFWGVVSHSFPATLETQEQDVLVQKYLEKYNLKNDGRQVEKRRNSGPVVEKL KQMQEFFGLKVTGKPD AETLKV MKQPRCGVPDVAQFVLTEGNPRWEQTHLTYRIENYTPDL PRA DVDHAIEKAFQLWSNV TPLTFTK VSEGGADIMISFVRGDHRD NSPFDGPGGNLAHAFQPGPGIGG DAHFDEDERWTN NFREYNLHRVA AHELGHSLGLSHSTDIGALMYP SYTFSGDVQLAQDDIDGIQAI YGRSQNPVQPIGPQTPKACDSKLT FDAITIRGEVMFFKDRFY MRTNPFYPEVELNFISVFWPQLP NGLEAA YEFADRDEVRFFKGNKYWAVQGGQNV LHGYPKDIYSSFGFPRTVKHIDAAL SEENTGKTY FFVANKY WRYDEYKRSM DPGYPK MIAHDFPGIGHKVD AVFMKDGFFYFFH GTRQYKFD PKTKRIL TLQKANSWFNCRKN
Host	Rabbit
Reactivity	Human
Interspecies Antigen Sequence	Mouse (59); Rat (58)
Quality Control Testing	Antibody reactive against mammalian transfected lysate.
Storage Buffer	In 1x PBS, pH 7.4
Storage Instruction	Store at -20°C or lower. Aliquot to avoid repeated freezing and thawing.

Applications

- Western Blot (Tissue lysate)

MMP1 MaxPab rabbit polyclonal antibody. Western Blot analysis of MMP1 expression in human pancreas.

[Protocol Download](#)

- Western Blot (Transfected lysate)

Western Blot analysis of MMP1 expression in transfected 293T cell line ([H00004312-T01](#)) by MMP1 MaxPab polyclonal antibody.

Lane 1: MMP1 transfected lysate(54.00 KDa).

Lane 2: Non-transfected lysate.

[Protocol Download](#)

- Immunohistochemistry (Formalin/PFA-fixed paraffin-embedded sections)

Immunoperoxidase of purified MaxPab rabbit antibody to MMP1 on formalin-fixed paraffin-embedded human colon. [antibody concentration 3 ug/ml]

[Protocol Download](#)

- In situ* Proximity Ligation Assay (Cell)

Proximity Ligation Analysis of protein-protein interactions between MMP1 and F2R. HeLa cells were stained with anti-MMP1 rabbit purified polyclonal 1:1200 and anti-F2R mouse monoclonal antibody 1:50. Each red dot represents the detection of protein-protein interaction complex, and nuclei were counterstained with DAPI (blue).

Gene Info — MMP1

Entrez GeneID [4312](#)

GeneBank Accession# [NM_002421](#)

Protein Accession# [NP_002412.1](#)

Gene Name MMP1

Gene Alias CLG, CLGN

Gene Description matrix metalloproteinase 1 (interstitial collagenase)

Omim ID [120353 606963](#)

Gene Ontology [Hyperlink](#)

Gene Summary

Proteins of the matrix metalloproteinase (MMP) family are involved in the breakdown of extracellular matrix in normal physiological processes, such as embryonic development, reproduction, and tissue remodeling, as well as in disease processes, such as arthritis and metastasis. Most MMP's are secreted as inactive proproteins which are activated when cleaved by extracellular proteinases. This gene encodes a secreted enzyme which breaks down the interstitial collagens, types I, II, and III. The gene is part of a cluster of MMP genes which localize to chromosome 11q22.3. Alternative splicing results in multiple transcript variants.[provided by RefSeq]

Other Designations

fibroblast collagenase|interstitial collagenase|matrix metalloproteinase 1|matrix metalloproteinase 1|matrix metalloproteinase 1 (interstitial collagenase)

Pathway

- [Bladder cancer](#)
- [Pathways in cancer](#)
- [PPAR signaling pathway](#)

Disease

- [Adenocarcinoma](#)
- [Adenomatous Polyps](#)
- [Aggressive Periodontitis](#)
- [Airway Obstruction](#)
- [alpha 1-Antitrypsin Deficiency](#)
- [Alpha-1-antitrypsin deficiency](#)
- [Alveolar Bone Loss](#)
- [Alzheimer disease](#)
- [Amyotrophic lateral sclerosis](#)
- [Anoxia](#)
- [Aortic Aneurysm](#)
- [Arthritis](#)
- [Asthma](#)
- [Astrocytoma](#)
- [Atherosclerosis](#)
- [Brain Neoplasms](#)
- [Breast cancer](#)

- [Breast Neoplasms](#)
- [Bronchiectasis](#)
- [Bronchitis](#)
- [Carcinoma](#)
- [Cardiomyopathy](#)
- [Cardiovascular Diseases](#)
- [Carotid Artery](#)
- [Carotid Artery Diseases](#)
- [Carotid Stenosis](#)
- [Celiac Disease](#)
- [Cervical Intraepithelial Neoplasia](#)
- [Cholangitis](#)
- [Chorioamnionitis](#)
- [Chronic Disease](#)
- [Chronic Periodontitis](#)
- [Cleft Lip](#)
- [Cleft Palate](#)
- [Colitis](#)
- [Colorectal Neoplasms](#)
- [Connective Tissue Diseases](#)
- [Constriction](#)
- [Coronary Artery Disease](#)
- [Coronary Disease](#)
- [Crohn Disease](#)
- [Cystic fibrosis](#)
- [Dementia](#)

- [Diabetes Complications](#)
- [Diabetes Mellitus](#)
- [Diabetic Angiopathies](#)
- [Disease Progression](#)
- [Disease Susceptibility](#)
- [Ductus Arteriosus](#)
- [Edema](#)
- [Emphysema](#)
- [Endometrial Neoplasms](#)
- [Endometriosis](#)
- [Epidermolysis Bullosa](#)
- [Esophageal Neoplasms](#)
- [Exfoliation Syndrome](#)
- [Eye Diseases](#)
- [Fetal Diseases](#)
- [Fetal Membranes](#)
- [Fibrosis](#)
- [Genetic Predisposition to Disease](#)
- [Gingival Overgrowth](#)
- [Glaucoma](#)
- [Glioblastoma](#)
- [Graft Occlusion](#)
- [Head and Neck Neoplasms](#)
- [Hearing Loss](#)
- [Helicobacter Infections](#)
- [Hepatitis C](#)

- [Hypertension](#)
- [Hypertrophy](#)
- [Idiopathic Pulmonary Fibrosis](#)
- [Infant](#)
- [Infection](#)
- [Inflammation](#)
- [Kidney Diseases](#)
- [Kidney Failure](#)
- [Kidney Neoplasms](#)
- [Leiomyoma](#)
- [Lichen Planus](#)
- [Liver Cirrhosis](#)
- [Liver Neoplasms](#)
- [Lung carcinoma](#)
- [Lung Neoplasms](#)
- [Lymphatic Metastasis](#)
- [Lymphoma](#)
- [Metabolic Syndrome X](#)
- [Mitral Valve Insufficiency](#)
- [Mitral Valve Prolapse](#)
- [Mouth Neoplasms](#)
- [Multiple Sclerosis](#)
- [Musculoskeletal Diseases](#)
- [Myocardial Infarction](#)
- [Myopia](#)
- [Nasopharyngeal Neoplasms](#)

- [Neoplasm Invasiveness](#)
- [Neoplasm Metastasis](#)
- [Neoplasm Recurrence](#)
- [Neoplasms](#)
- [Obesity](#)
- [Obstetric Labor](#)
- [Oral Submucous Fibrosis](#)
- [Osteoarthritis](#)
- [Osteolysis](#)
- [Osteomyelitis](#)
- [Osteoporosis](#)
- [Ovarian cancer](#)
- [Ovarian Neoplasms](#)
- [Papillomavirus Infections](#)
- [Parkinson disease](#)
- [Periodontal Attachment Loss](#)
- [Periodontal Pocket](#)
- [Periodontitis](#)
- [Peripheral Vascular Diseases](#)
- [Pneumonia](#)
- [Polycystic Ovary Syndrome](#)
- [Pre-Eclampsia](#)
- [Pregnancy Complications](#)
- [Premature Birth](#)
- [Prostate cancer](#)
- [Prostatic Neoplasms](#)

- [Prosthesis Failure](#)
- [Prosthesis-Related Infections](#)
- [Pruritus](#)
- [Pulmonary Disease](#)
- [Pulmonary Emphysema](#)
- [Renal Insufficiency](#)
- [Rheumatoid Nodule](#)
- [Rhinitis](#)
- [Sarcoidosis](#)
- [Scleroderma](#)
- [Skin Diseases](#)
- [Spinal Diseases](#)
- [Stomach Neoplasms](#)
- [Stomach Ulcer](#)
- [Subarachnoid Hemorrhage](#)
- [Thrombosis](#)
- [Tongue Neoplasms](#)
- [Tooth Loss](#)
- [Tuberculosis](#)
- [Urinary Bladder Neoplasms](#)
- [Urinary Incontinence](#)
- [Uterine Cervical Neoplasms](#)
- [Uterine Neoplasms](#)
- [Varicose Veins](#)
- [Werner syndrome](#)