

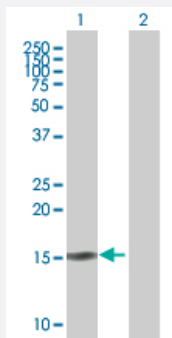
MaxPab®

# SCGB2A2 MaxPab mouse polyclonal antibody (B01)

Catalog # H00004250-B01

Size 50 uL

## Applications



### Western Blot (Transfected lysate)

Western Blot analysis of SCGB2A2 expression in transfected 293T cell line ([H00004250-T01](#)) by SCGB2A2 MaxPab polyclonal antibody.

Lane 1: SCGB2A2 transfected lysate(10.23 kDa).

Lane 2: Non-transfected lysate.

## Specification

Product Description	Mouse polyclonal antibody raised against a full-length human SCGB2A2 protein.
Immunogen	SCGB2A2 (AAI28403.1, 1 a.a. ~ 93 a.a) full-length human protein.
Sequence	MKLLMVLMLAALSQHCYAGSGCPLEENVISKTNPQVSKTEYKELLQEFIDDNATTNAIDELKECFL NQDETLSNVEVFMQLIYDSSLCDLF
Host	Mouse
Reactivity	Human
Quality Control Testing	Antibody reactive against mammalian transfected lysate.
Storage Buffer	No additive
Storage Instruction	Store at -20°C or lower. Aliquot to avoid repeated freezing and thawing.
Note	For IHC and IF applications, antibody purification with Protein A will be needed prior to use.

## Applications

- Western Blot (Transfected lysate)

Western Blot analysis of SCGB2A2 expression in transfected 293T cell line ([H00004250-T01](#)) by SCGB2A2 MaxPab polyclonal antibody.

Lane 1: SCGB2A2 transfected lysate(10.23 KDa).

Lane 2: Non-transfected lysate.

[Protocol Download](#)

## Gene Info — SCGB2A2

Entrez GeneID	<a href="#">4250</a>
GeneBank Accession#	<a href="#">NM_002411.1</a>
Protein Accession#	<a href="#">AAI28403.1</a>
Gene Name	SCGB2A2
Gene Alias	MGB1, MGC71974, UGB2
Gene Description	secretoglobin, family 2A, member 2
Omim ID	<a href="#">605562</a>
Gene Ontology	<a href="#">Hyperlink</a>
Gene Summary	family 2A
Other Designations	mammaglobin 1 mammaglobin A