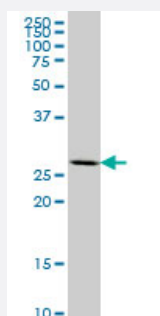


MEOX2 monoclonal antibody (M11), clone 4B2

Catalog # H00004223-M11

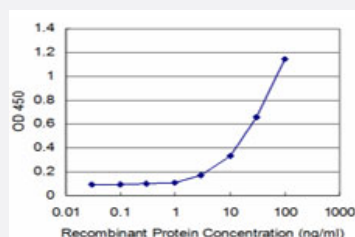
Size 100 ug

Applications



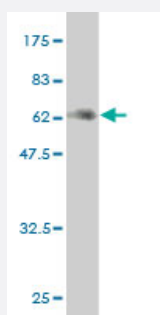
Western Blot (Cell lysate)

MEOX2 monoclonal antibody (M11), clone 4B2 Western Blot analysis of MEOX2 expression in MCF-7 (Cat # L046V1).



Sandwich ELISA (Recombinant protein)

Detection limit for recombinant GST tagged MEOX2 is approximately 3ng/ml as a capture antibody.



Western Blot detection against Immunogen (59.07 KDa) .

Specification

Product Description

Mouse monoclonal antibody raised against a full length recombinant MEOX2.

Immunogen	MEOX2 (AAH17021, 1 a.a. ~ 303 a.a) full-length recombinant protein with GST tag. MW of the GST tag alone is 26 KDa.
Sequence	MEHPLFGCLRSPHATAQGLHPFSQSSSLALHGRSDHMSYPELSTSSSSSCIAGYPNEEGMFASQH HRGHHHHHHHHHHHHQQQHQALQTNWHLPMQSSPPSAARHSLCLOPDSGGPPELGSSPPVL CSNSSSLGSSTPTGAACAPGDYGRQALSPAFAEKRSQGGKRKSDSSDSQEGNYKSEVNSKPRK ERTAFTKEQIRELEAEFAHHNYLTRLRRYEIAVNLDLTERQVKVWFQNRMMKWKRVKGGQQGAA AREKELVNVKKGTLPSSELSGIGAATLQQTGDSIANEDSHDSHSSEHAHL
Host	Mouse
Reactivity	Human
Interspecies Antigen Sequence	Mouse (98)
Isotype	IgG1 Kappa
Quality Control Testing	Antibody Reactive Against Recombinant Protein. Western Blot detection against Immunogen (59.07 KDa) .
Storage Buffer	In 1x PBS, pH 7.4
Storage Instruction	Store at -20°C or lower. Aliquot to avoid repeated freezing and thawing.

Applications

- Western Blot (Cell lysate)

MEOX2 monoclonal antibody (M11), clone 4B2 Western Blot analysis of MEOX2 expression in MCF-7 (Cat # L046V1).

[Protocol Download](#)

- Western Blot (Recombinant protein)

[Protocol Download](#)

- Sandwich ELISA (Recombinant protein)

Detection limit for recombinant GST tagged MEOX2 is approximately 3ng/ml as a capture antibody.

[Protocol Download](#)

- ELISA

Gene Info — MEOX2

Entrez GeneID	4223
GeneBank Accession#	BC017021
Protein Accession#	AAH17021
Gene Name	MEOX2
Gene Alias	GAX, MOX2
Gene Description	mesenchyme homeobox 2
Omim ID	600535
Gene Ontology	Hyperlink
Gene Summary	This gene encodes a member of a subfamily of non-clustered, diverged, antennapedia-like homeobox-containing genes. The encoded protein may play a role in the regulation of vertebrate limb myogenesis. Mutations in the related mouse protein may be associated with craniofacial and/or skeletal abnormalities, in addition to neurovascular dysfunction observed in Alzheimer's disease. [provided by RefSeq]
Other Designations	growth arrest-specific homeo box mesenchyme homeo box 2 (growth arrest-specific homeo box)

Disease

- [Tobacco Use Disorder](#)