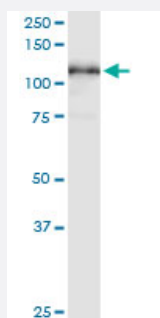


MCM3 monoclonal antibody (M06), clone 3E11

Catalog # H00004172-M06

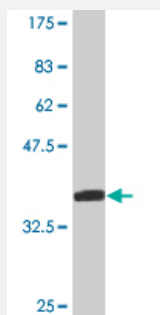
Size 100 ug

Applications



Western Blot (Tissue lysate)

MCM3 monoclonal antibody (M06), clone 3E11. Western Blot analysis of MCM3 expression in human spleen.



Western Blot detection against Immunogen (35.42 KDa) .

Specification

Product Description	Mouse monoclonal antibody raised against a full-length recombinant MCM3.
Immunogen	MCM3 (NP_002379, 26 a.a. ~ 113 a.a) full-length recombinant protein with GST tag. MW of the GST tag alone is 26 KDa.
Sequence	EEDQGIYQSKVRELISDNQYRLVNVNDLRRKNEKRANRLLNNAFEELVAFQRALKDFVASIDATYA KQYEEFYVGLGSFGSKHVS
Host	Mouse
Reactivity	Human

Interspecies Antigen Sequence	Mouse (97); Rat (98)
Isotype	IgG2a Kappa
Quality Control Testing	Antibody Reactive Against Recombinant Protein. Western Blot detection against Immunogen (35.42 KDa) .
Storage Buffer	In 1x PBS, pH 7.4
Storage Instruction	Store at -20°C or lower. Aliquot to avoid repeated freezing and thawing.

Applications

- Western Blot (Tissue lysate)

MCM3 monoclonal antibody (M06), clone 3E11. Western Blot analysis of MCM3 expression in human spleen.

[Protocol Download](#)

- Western Blot (Recombinant protein)

[Protocol Download](#)

- ELISA

Gene Info — MCM3

Entrez GeneID	4172
GeneBank Accession#	NM_002388
Protein Accession#	NP_002379
Gene Name	MCM3
Gene Alias	HCC5, MGC1157, P1-MCM3, P1.h, RLFB
Gene Description	minichromosome maintenance complex component 3
Omim ID	602693
Gene Ontology	Hyperlink

Gene Summary

The protein encoded by this gene is one of the highly conserved mini-chromosome maintenance proteins (MCM) that are involved in the initiation of eukaryotic genome replication. The hexameric protein complex formed by MCM proteins is a key component of the pre-replication complex (pre-RC) and may be involved in the formation of replication forks and in the recruitment of other DNA replication related proteins. This protein is a subunit of the protein complex that consists of MCM2-7. It has been shown to interact directly with MCM5/CDC46. This protein also interacts with, and thus is acetylated by MCM3AP, a chromatin-associated acetyltransferase. The acetylation of this protein inhibits the initiation of DNA replication and cell cycle progression. [provided by RefSeq]

Other Designations

DNA polymerase alpha holoenzyme-associated protein P1|DNA replication factor MCM3|MCM3 minichromosome maintenance deficient 3|OTTHUMP00000016600|cervical cancer proto-oncogene 5|hRlf beta subunit|minichromosome maintenance deficient 3|replication licensin

Pathway

- [Cell cycle](#)
- [DNA replication](#)