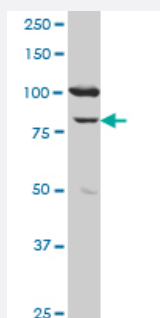


MCM3 monoclonal antibody (M04), clone 2H3

Catalog # H00004172-M04

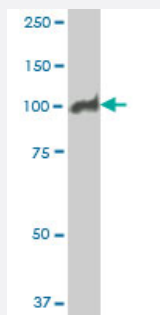
Size 100 ug

Applications



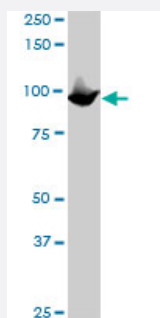
Western Blot (Tissue lysate)

MCM3 monoclonal antibody (M04), clone 2H3. Western Blot analysis of MCM3 expression in human ovarian cancer.



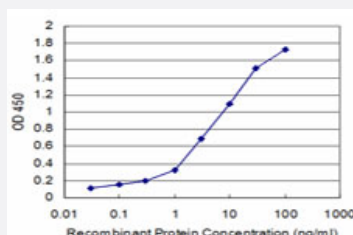
Western Blot (Cell lysate)

MCM3 monoclonal antibody (M04), clone 2H3. Western Blot analysis of MCM3 expression in HeLa S3 NE (Cat # L013V3).



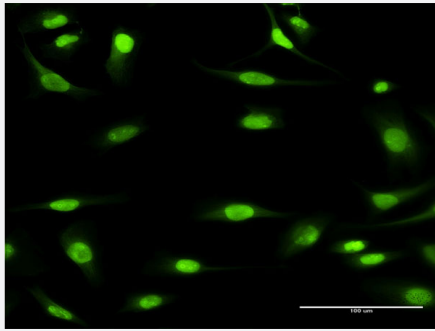
Western Blot (Cell lysate)

MCM3 monoclonal antibody (M04), clone 2H3. Western Blot analysis of MCM3 expression in Y-79 (Cat # L042V1).



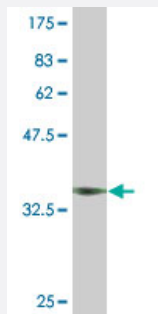
Sandwich ELISA (Recombinant protein)

Detection limit for recombinant GST tagged MCM3 is approximately 0.1ng/ml as a capture antibody.



Immunofluorescence

Immunofluorescence of monoclonal antibody to MCM3 on HeLa cell . [antibody concentration 10 ug/ml]



Western Blot detection against Immunogen (37.84 KDa) .

Specification

Product Description	Mouse monoclonal antibody raised against a partial recombinant MCM3.
Immunogen	MCM3 (NP_002379, 699 a.a. ~ 808 a.a) partial recombinant protein with GST tag. MW of the GST tag alone is 26 KDa.
Sequence	AKDGDSYDPYDFSDTEEMPQVHTPKTADSQETKESQKVELSESRLKAFKVALLDVFREAHQAQ SIGMNRLTESINRDSEEPFSSVEIQAALSKMQDDNQVMVSEGIIFLI
Host	Mouse
Reactivity	Human
Interspecies Antigen Sequence	Mouse (75); Rat (79)
Isotype	IgG2a Kappa
Quality Control Testing	Antibody Reactive Against Recombinant Protein. Western Blot detection against Immunogen (37.84 KDa) .
Storage Buffer	In 1x PBS, pH 7.4
Storage Instruction	Store at -20°C or lower. Aliquot to avoid repeated freezing and thawing.

Applications

- Western Blot (Tissue lysate)

MCM3 monoclonal antibody (M04), clone 2H3. Western Blot analysis of MCM3 expression in human ovarian cancer.

[Protocol Download](#)

- Western Blot (Cell lysate)

MCM3 monoclonal antibody (M04), clone 2H3. Western Blot analysis of MCM3 expression in HeLa S3 NE (Cat # L013V3).

[Protocol Download](#)

- Western Blot (Cell lysate)

MCM3 monoclonal antibody (M04), clone 2H3. Western Blot analysis of MCM3 expression in Y-79 (Cat # L042V1).

[Protocol Download](#)

- Western Blot (Recombinant protein)

[Protocol Download](#)

- Sandwich ELISA (Recombinant protein)

Detection limit for recombinant GST tagged MCM3 is approximately 0.1ng/ml as a capture antibody.

[Protocol Download](#)

- ELISA

- Immunofluorescence

Immunofluorescence of monoclonal antibody to MCM3 on HeLa cell . [antibody concentration 10 ug/ml]

Gene Info — MCM3

Entrez GeneID	4172
---------------	----------------------

GeneBank Accession#	NM_002388
---------------------	---------------------------

Protein Accession#	NP_002379
--------------------	---------------------------

Gene Name	MCM3
-----------	------

Gene Alias	HCC5, MGC1157, P1-MCM3, P1.h, RLFB
------------	------------------------------------

Gene Description	minichromosome maintenance complex component 3
Omim ID	602693
Gene Ontology	Hyperlink
Gene Summary	<p>The protein encoded by this gene is one of the highly conserved mini-chromosome maintenance proteins (MCM) that are involved in the initiation of eukaryotic genome replication. The hexameric protein complex formed by MCM proteins is a key component of the pre-replication complex (pre-RC) and may be involved in the formation of replication forks and in the recruitment of other DNA replication related proteins. This protein is a subunit of the protein complex that consists of MCM2-7. It has been shown to interact directly with MCM5/CDC46. This protein also interacts with, and thus is acetylated by MCM3AP, a chromatin-associated acetyltransferase. The acetylation of this protein inhibits the initiation of DNA replication and cell cycle progression. [provided by RefSeq]</p>
Other Designations	DNA polymerase alpha holoenzyme-associated protein P1 DNA replication factor MCM3 MCM3 minichromosome maintenance deficient 3 OTTHUMP00000016600 cervical cancer proto-oncogene 5 hRlf beta subunit minichromosome maintenance deficient 3 replication licensin

Pathway

- [Cell cycle](#)
- [DNA replication](#)