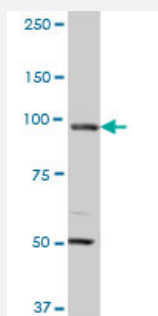


MCM3 monoclonal antibody (M01A), clone 4F7

Catalog # H00004172-M01A

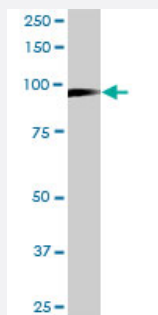
Size 200 uL

Applications



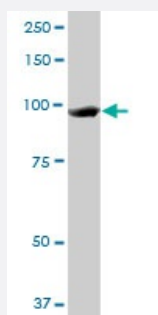
Western Blot (Tissue lysate)

MCM3 monoclonal antibody (M01A), clone 4F7. Western Blot analysis of MCM3 expression in human colon.



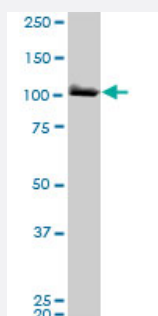
Western Blot (Cell lysate)

MCM3 monoclonal antibody (M01A), clone 4F7. Western Blot analysis of MCM3 expression in Daoy.



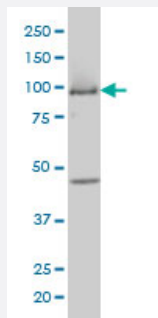
Western Blot (Cell lysate)

MCM3 monoclonal antibody (M01A), clone 4F7. Western Blot analysis of MCM3 expression in A-431 (Cat # L015V1).



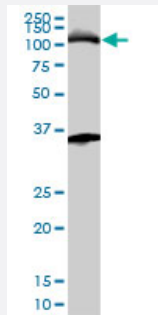
Western Blot (Cell lysate)

MCM3 monoclonal antibody (M01A), clone 4F7. Western Blot analysis of MCM3 expression in HeLa (Cat # L013V1).



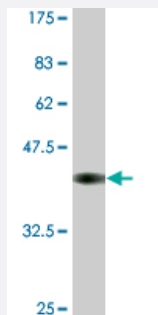
Western Blot (Cell lysate)

MCM3 monoclonal antibody (M01A), clone 4F7 Western Blot analysis of MCM3 expression in COLO 320 HSR (Cat # L020V1).



Western Blot (Cell lysate)

MCM3 monoclonal antibody (M01A), clone 4F7. Western Blot analysis of MCM3 expression in K-562 (Cat # L009V1).



Western Blot detection against Immunogen (37.84 KDa) .

Specification

Product Description	Mouse monoclonal antibody raised against a partial recombinant MCM3.
Immunogen	MCM3 (NP_002379, 699 a.a. ~ 808 a.a) partial recombinant protein with GST tag. MW of the GST tag alone is 26 KDa.
Sequence	AKDGDSYDPYDFSDTEEEEMPQVHTPKTADSQETKESQKVELSESRLKAFKVALLDVFREAHAQ SIGMNRLTESINRDSEEPFSSVEIQAALSKMQDDNQVMVSEGIIFLI
Host	Mouse
Reactivity	Human, Mouse
Interspecies Antigen Sequence	Mouse (75); Rat (79)
Isotype	IgG2a Lambda

Quality Control Testing

Antibody Reactive Against Recombinant Protein.
Western Blot detection against Immunogen (37.84 KDa) .

Storage Buffer

In ascites fluid

Storage Instruction

Store at -20°C or lower. Aliquot to avoid repeated freezing and thawing.

Applications

- Western Blot (Tissue lysate)

MCM3 monoclonal antibody (M01A), clone 4F7. Western Blot analysis of MCM3 expression in human colon.

[Protocol Download](#)

- Western Blot (Cell lysate)

MCM3 monoclonal antibody (M01A), clone 4F7. Western Blot analysis of MCM3 expression in Daoy.

[Protocol Download](#)

- Western Blot (Cell lysate)

MCM3 monoclonal antibody (M01A), clone 4F7. Western Blot analysis of MCM3 expression in A-431 (Cat # L015V1).

[Protocol Download](#)

- Western Blot (Cell lysate)

MCM3 monoclonal antibody (M01A), clone 4F7. Western Blot analysis of MCM3 expression in HeLa (Cat # L013V1).

[Protocol Download](#)

- Western Blot (Cell lysate)

MCM3 monoclonal antibody (M01A), clone 4F7 Western Blot analysis of MCM3 expression in COLO 320 HSR (Cat # L020V1).

[Protocol Download](#)

- Western Blot (Cell lysate)

MCM3 monoclonal antibody (M01A), clone 4F7. Western Blot analysis of MCM3 expression in K-562 (Cat # L009V1).

[Protocol Download](#)

- Western Blot (Recombinant protein)

[Protocol Download](#)

- ELISA

Gene Info — MCM3

Entrez GeneID [4172](#)

GeneBank Accession# [NM_002388](#)

Protein Accession# [NP_002379](#)

Gene Name MCM3

Gene Alias HCC5, MGC1157, P1-MCM3, P1.h, RLFB

Gene Description minichromosome maintenance complex component 3

Omim ID [602693](#)

Gene Ontology [Hyperlink](#)

Gene Summary

The protein encoded by this gene is one of the highly conserved mini-chromosome maintenance proteins (MCM) that are involved in the initiation of eukaryotic genome replication. The hexameric protein complex formed by MCM proteins is a key component of the pre-replication complex (pre-RC) and may be involved in the formation of replication forks and in the recruitment of other DNA replication related proteins. This protein is a subunit of the protein complex that consists of MCM2-7. It has been shown to interact directly with MCM5/CDC46. This protein also interacts with, and thus is acetylated by MCM3AP, a chromatin-associated acetyltransferase. The acetylation of this protein inhibits the initiation of DNA replication and cell cycle progression. [provided by RefSeq]

Other Designations

DNA polymerase alpha holoenzyme-associated protein P1|DNA replication factor MCM3|MCM3 minichromosome maintenance deficient 3|OTTHUMP00000016600|cervical cancer proto-oncogene 5|hRlf beta subunit|minichromosome maintenance deficient 3|replication licensin

Pathway

- [Cell cycle](#)
- [DNA replication](#)